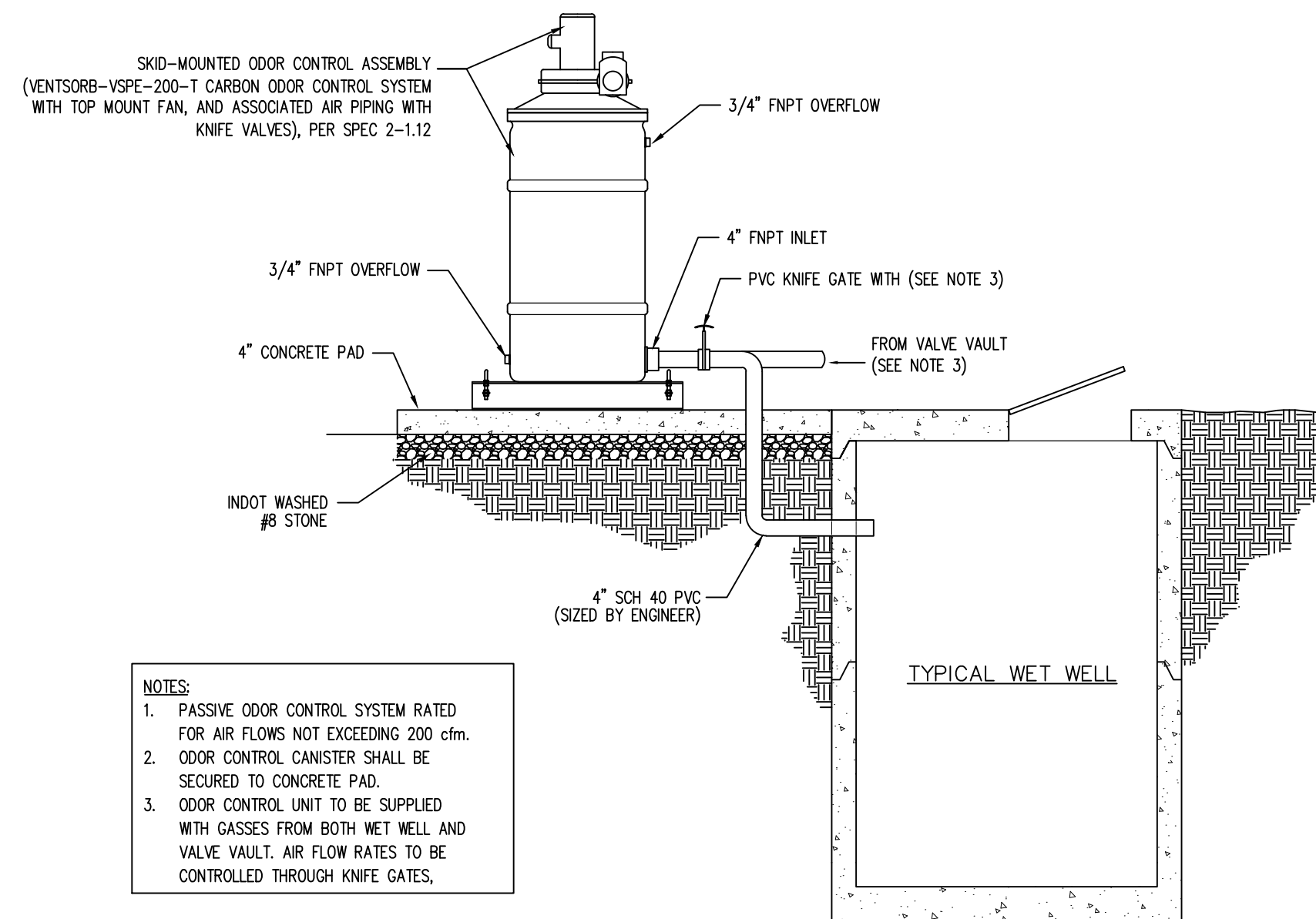


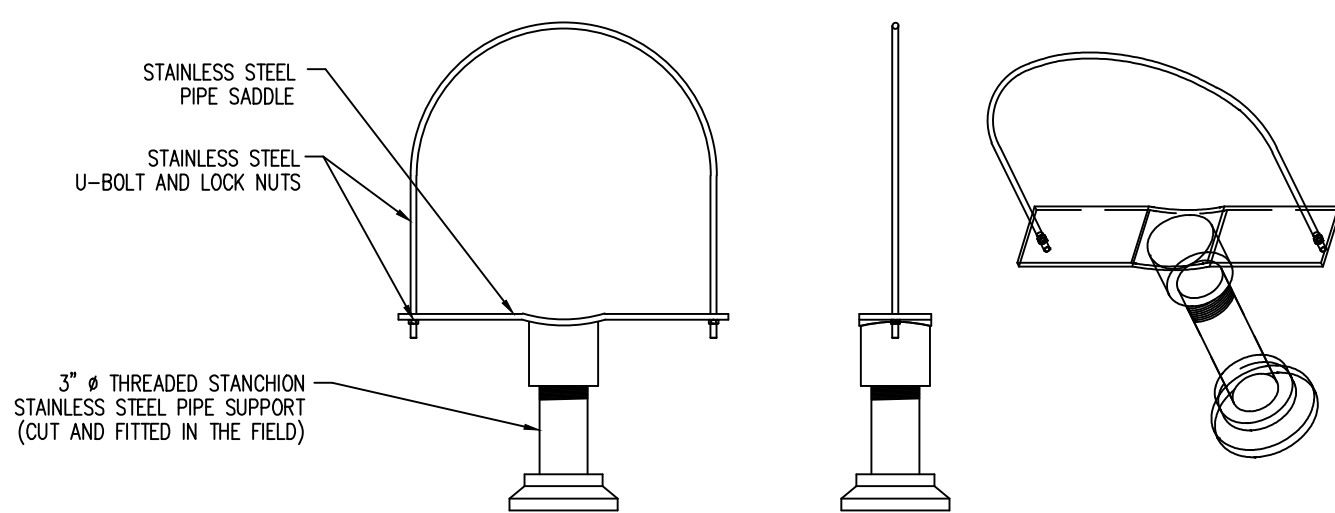
LIFT STATION ODOR CONTROL DETAIL (≥ 50 EDU)

NO SCALE
(FOR INSTALLATIONS SERVING 50 EDU's OR MORE)



LIFT STATION ODOR CONTROL DETAIL (< 50 EDU)

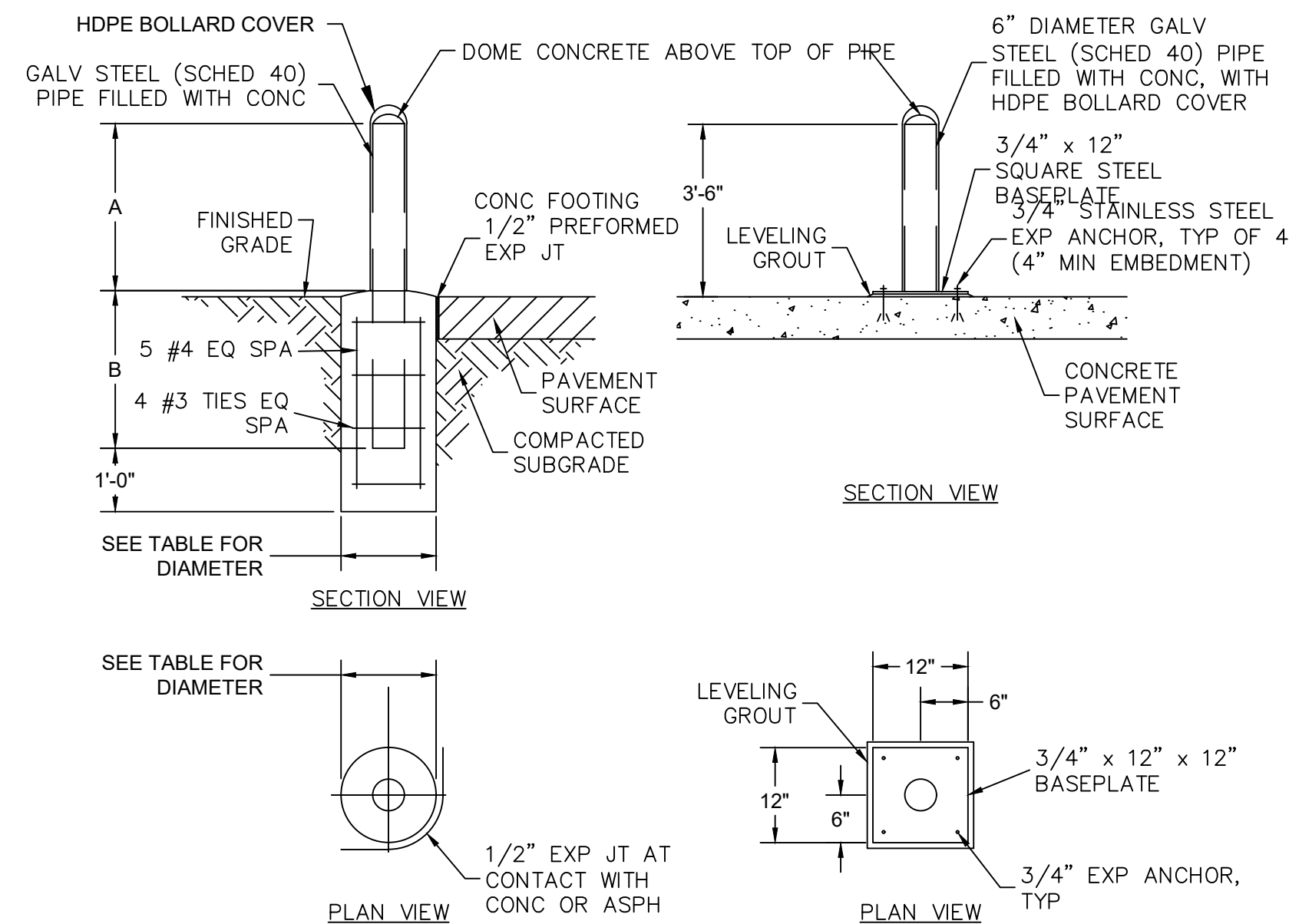
NO SCALE
(FOR INSTALLATIONS SERVING LESS THAN 50 EDU's)



- NOTES:
1. ANVIL INTERNATIONAL SIZES RANGE FROM 4" TO 36"
 2. ADJUSTMENT IS OBTAINED BY TURNING THE LOOKOUT NIPPLE. THE LOWER END OF THE NIPPLE IS STAKED, UP-SETTING THE THREADS TO PREVENT SEPARATION OF NIPPLE AND COUPLING DURING ADJUSTMENT.

ADJUSTABLE PIPE SUPPORT DETAIL

NO SCALE



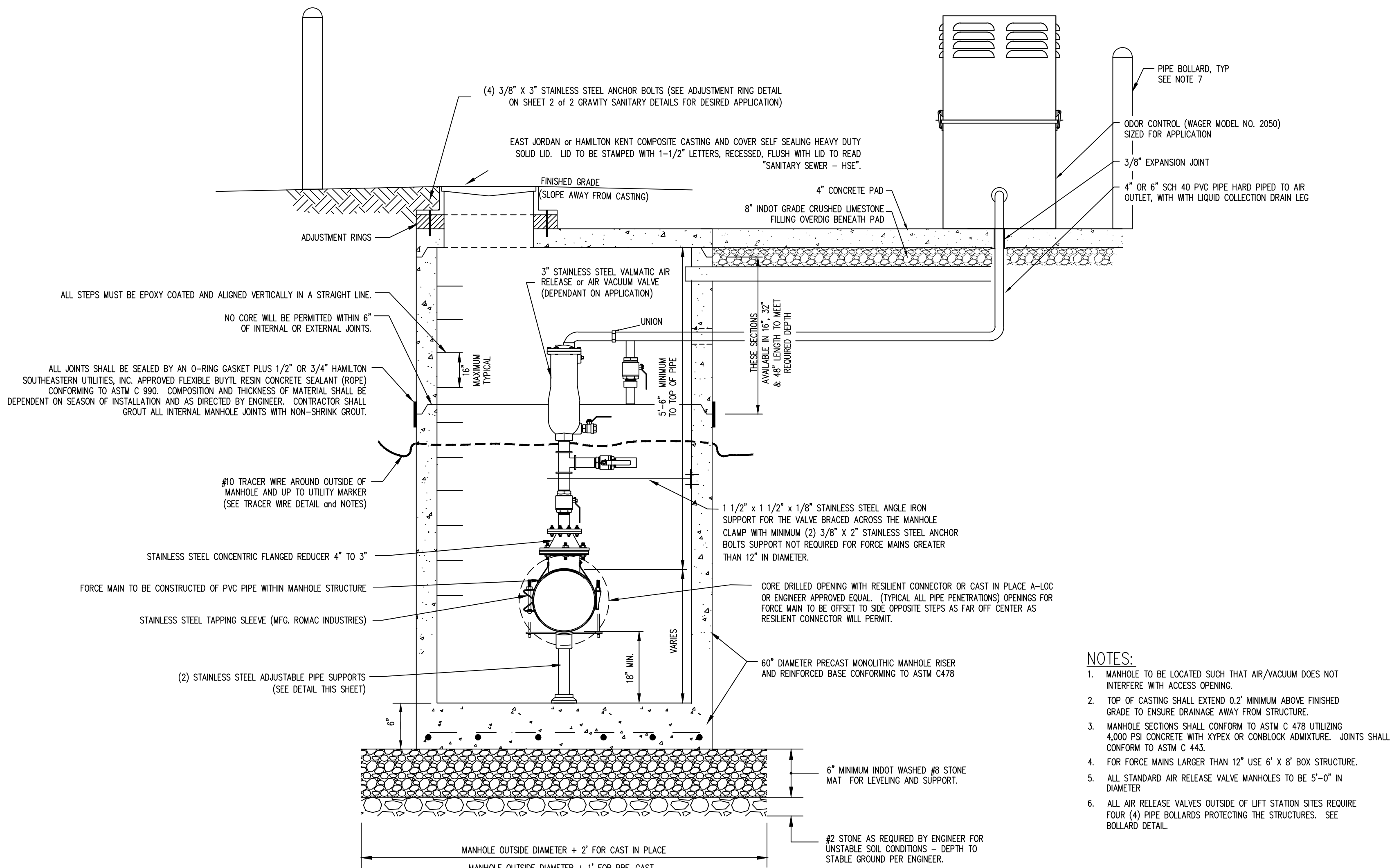
TYPES 1 AND 2 BOLLARDS TYPE 3 BOLLARD

- NOTES:
1. TYPE OF BOLLARD INSTALLED SHALL BE AS IDENTIFIED ON THE DRAWINGS OR AS DIRECTED BY THE ENGINEER.
 2. REFER TO SPEC 05520 FOR BOLLARD COVERS.

BOLLARDS		
	TYPE 1	TYPE 2
PIPE DIA	6"	8"
PIPE LENGTH	6'	7'
DIMENSION A	3'-6"	4'-0"
DIMENSION B	2'-6"	3'-0"
CONC FOOTING DIA	18"	24"

BOLLARD DETAIL

SCALE: NONE



AIR/VACUUM RELEASE MANHOLE FOR IN-LINE APPLICATIONS

NO SCALE

DISCLAIMER

HSE'S LIFT STATION PLAN, LIFT STATION AND FORCE MAIN DETAILS AND LIFT STATION AND FORCE MAIN SPECIFICATIONS ARE COMPLEMENTARY IN NATURE AND SHOULD NOT BE INTERPRETED INDIVIDUALLY WITHOUT REFERENCE TO THE OTHER SHEETS.

REVISED 4/15/2021

NOTE: CONTRACTOR SHALL CONTACT THE UTILITIES ENGINEER PRIOR TO PURCHASING ANY EQUIPMENT FOR THIS LIFT STATION OR FORCE MAIN TO VERIFY PROPER INTERPRETATION OF SPECIFICATIONS AND PLANS.

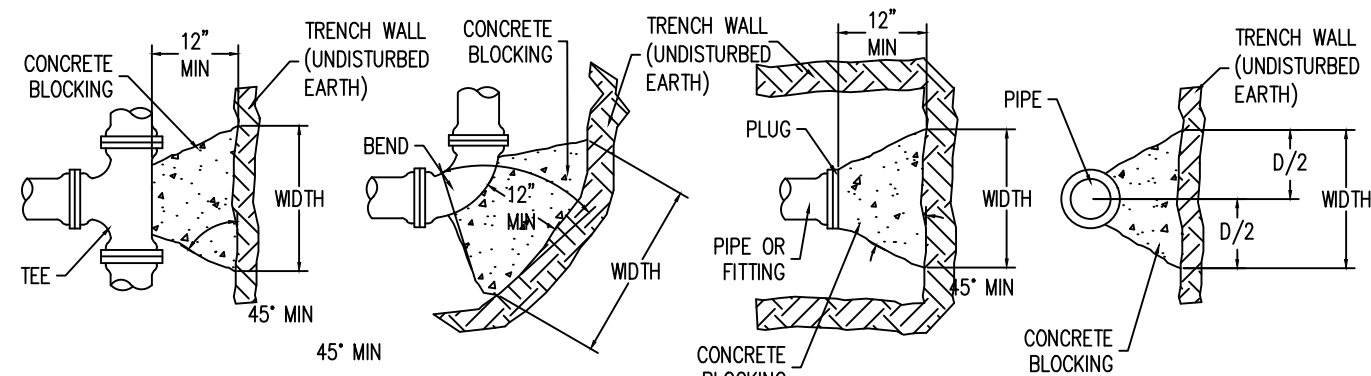
THESE DRAWINGS AND THE IDEAS, DESIGNS AND CONCEPTS CONTAINED HEREIN ARE THE EXCLUSIVE INTELLECTUAL PROPERTY OF SANITARY MANAGEMENT & ENGINEERING COMPANY, INC. AND ARE NOT TO BE USED OR REPRODUCED IN WHOLE OR IN PART, WITHOUT THE WRITTEN CONSENT OF SANITARY MANAGEMENT & ENGINEERING COMPANY, INC. © 2018 BY SANITARY MANAGEMENT & ENGINEERING COMPANY, INC.

REVISIONS		DATE	CHECK
BY	DATE	CHECK	NO.
1	12/12/2017	TK	1
2	06/12/2018	TK	2
3	06/12/2018	TK	3
4	06/12/2018	TK	4
5	07/17/2020	TK	5

DRAWN	CHECKED	DATE	NO.
1	12/12/2017	TK	1
2	06/12/2018	TK	2
3	06/12/2018	TK	3
4	06/12/2018	TK	4
5	07/17/2020	TK	5

PROJECT	JOB NO.	SCALE: N/A
PREPARED FOR		
TITLE	LIFT STATION and FORCE MAIN DETAILS	

SHEET	SHEET 1 OF 4
-------	--------------

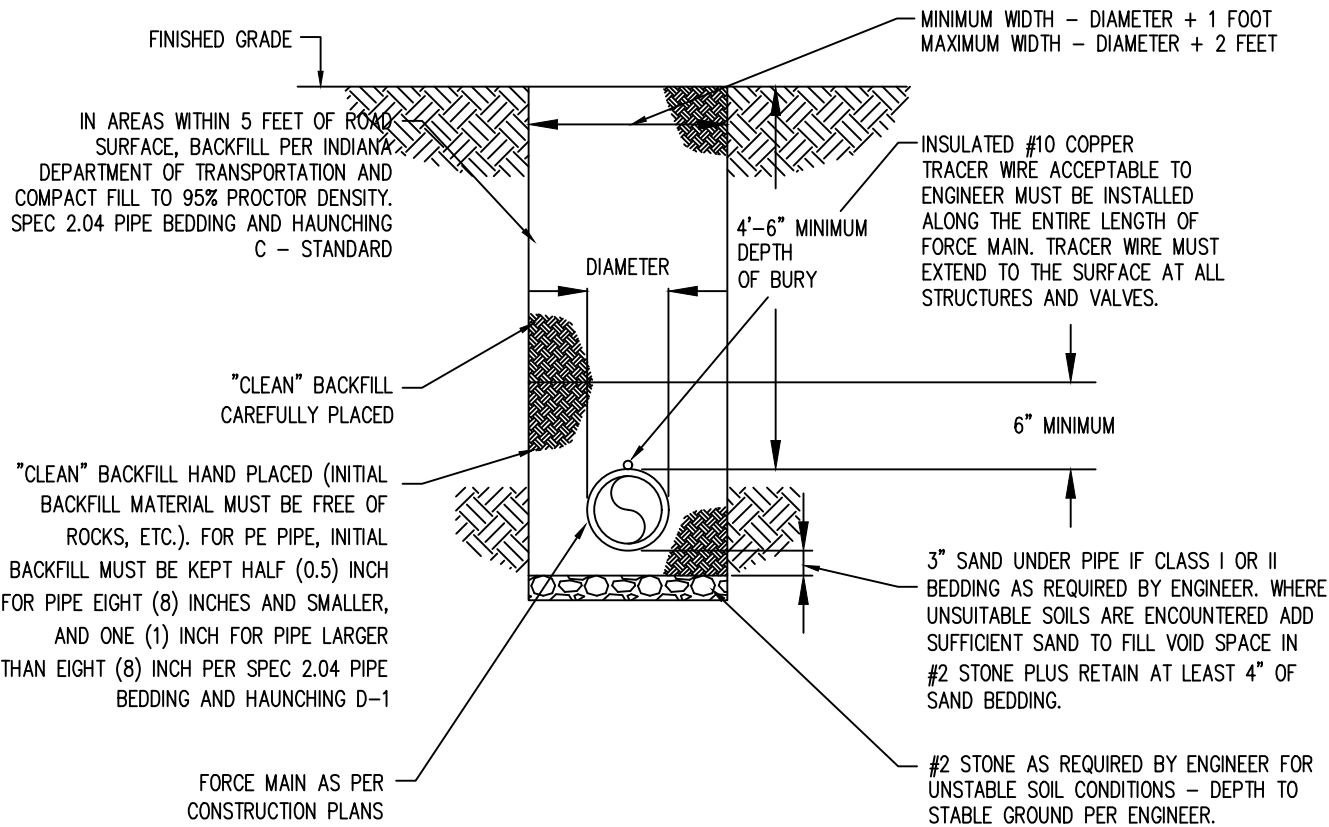


	TEE		22 1/2°		45°		90°		PLUG	
SIZE	W	D	W	D	W	D	W	D	W	D
3", 4"	2'-6"	1'-0"	1'-0"	0'-9"	1'-6"	1'-3"	2'-9"	1'-6"	1'-6"	1'-6"
6"	3'-3"	1'-6"	2'-0"	1'-0"	2'-6"	1'-6"	4'-3"	1'-6"	2'-3"	2'-3"
8"	4'-3"	2'-0"	2'-0"	1'-9"	3'-9"	1'-9"	6'-0"	2'-0"	3'-0"	3'-0"
10"	5'-3"	2'-6"	3'-0"	1'-9"	4'-0"	2'-6"	7'-3"	2'-6"	3'-9"	3'-9"
12"	6'-0"	3'-0"	3'-6"	2'-0"	4'-9"	3'-6"	7'-9"	3'-0"	4'-3"	4'-3"

- NOTES:
- CONCRETE REACTION BLOCKING SHALL NOT COVER PIPE JOINTS, BOLTS, OR GLANDS.
 - CONCRETE SHALL HAVE A COMPRESSIVE STRENGTH NOT LESS THAN 2000 PSI AFTER 28 DAYS. UNOPENED BAGS OF SACKRETE ARE NOT ACCEPTABLE.
 - WRAP DI FITTINGS WITH 8 MIL VISQUEEN OR POLYETHYLENE ENCASMENT.

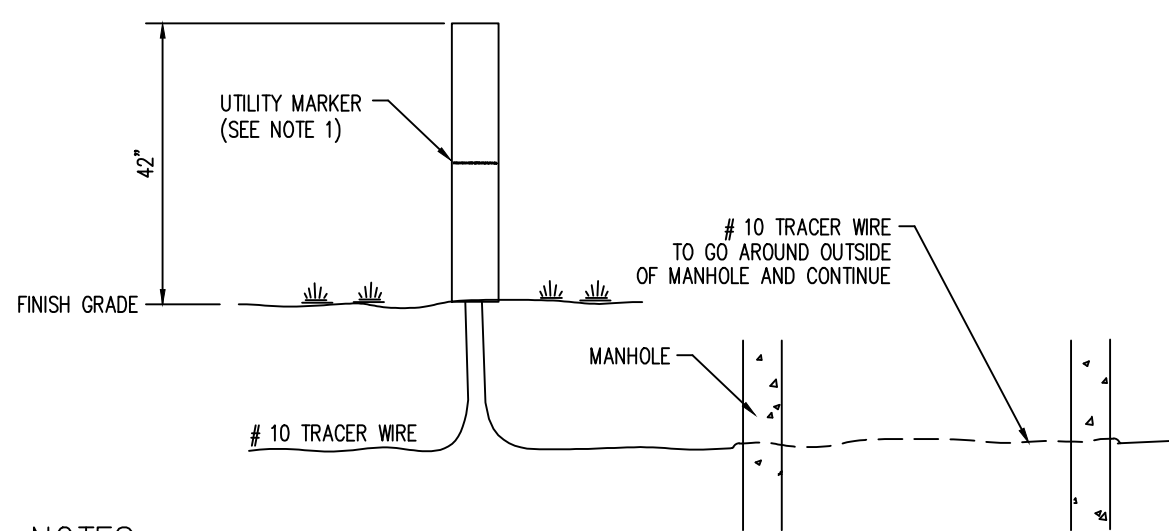
FORCE MAIN THRUST BLOCKING

NO SCALE



FORCE MAIN TRENCH DETAIL

NO SCALE

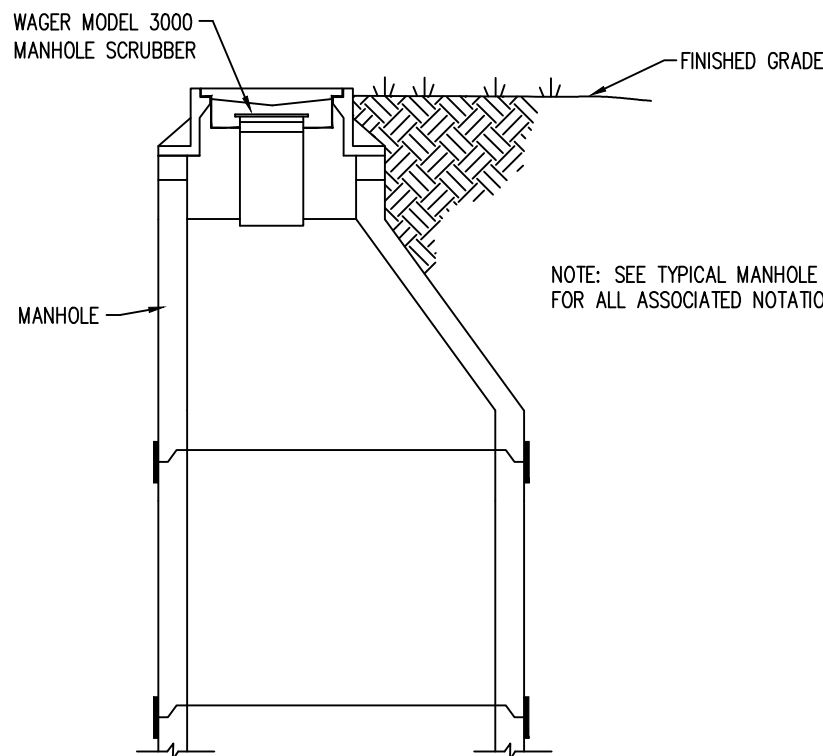


NOTES:

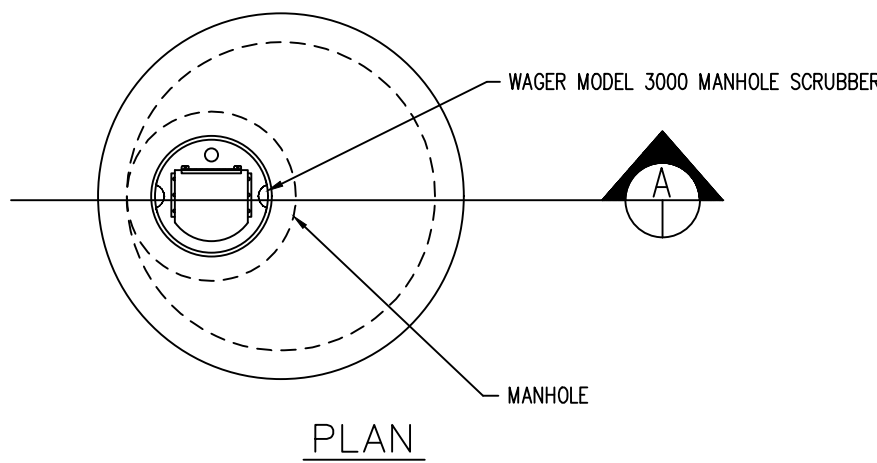
- #10 TRACER WIRE TO BE SUPPORTED IN A CARLON® MODEL NUMBER _____ ROUND DOME UTILITY MARKER. WHITE POLE 66", 42" ABOVE GROUND. GREEN TOP UTILITY MARKER TO BE LOCATED OUTSIDE THE MANHOLE. (SEE DETAIL). UTILITY MARKER TO BE LOCATED WHERE A FORCE MAIN CROSSES A STREET, ALL LIFT STATION / FORCE MAIN MANHOLES, VALVES AND FITTINGS, AND AT DISTANCES NOT TO EXCEED 1,200 FEET ALONG STRAIGHT RUNS.
- TEST CONNECTIONS ARE TO BE LOCATED ON OUTSIDE OF POST.

TRACER WIRE DETAIL

NO SCALE



SECTION A



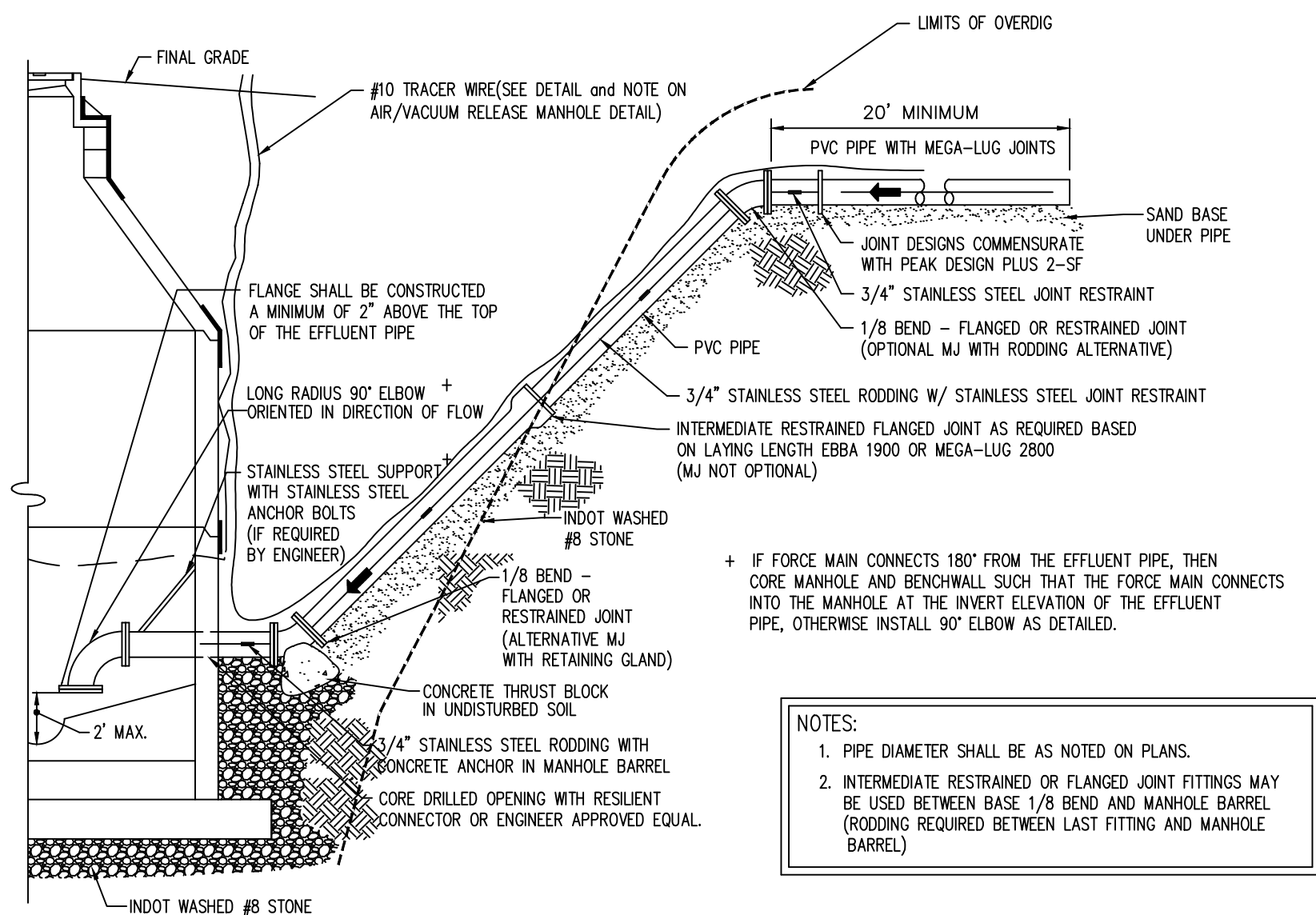
PLAN

NOTES:

- TO BE USED FOR FORCE MAINS WITH A DISCHARGE PIPE OF 4" OR SMALLER
- WAGER MODEL 3000 MANHOLE SCRUBBER WITH SOLBLS MIDAS ODOR CONTROL MEDIA IS REQUIRED TO BE INSTALLED.

ODOR CONTROL AT FORCE MAIN DISCHARGE

NO SCALE



NOTES:

- PIPE DIAMETER SHALL BE AS NOTED ON PLANS.
- INTERMEDIATE RESTRAINED OR FLANGED JOINT FITTINGS MAY BE USED BETWEEN BASE 1/8 BEND AND MANHOLE BARREL (RODDING REQUIRED BETWEEN LAST FITTING AND MANHOLE BARREL)

FORCE MAIN DISCHARGE AT MANHOLE DETAIL

NO SCALE

HSE'S LIFT STATION PLAN, LIFT STATION AND FORCE MAIN DETAILS AND LIFT STATION AND FORCE MAIN SPECIFICATIONS ARE COMPLEMENTARY IN NATURE AND SHOULD NOT BE INTERPRETED INDIVIDUALLY WITHOUT REFERENCE TO THE OTHER SHEETS.

REVISED 06/14/2022

NOTE: CONTRACTOR SHALL CONTACT THE UTILITIES ENGINEER PRIOR TO PURCHASING ANY EQUIPMENT FOR THIS LIFT STATION OR FORCE MAIN TO VERIFY PROPER INTERPRETATION OF SPECIFICATIONS AND PLANS.

THESE DRAWINGS AND THE IDEAS, DESIGNS AND CONCEPTS CONTAINED HEREIN ARE THE EXCLUSIVE INTELLECTUAL PROPERTY OF SANITARY MANAGEMENT & ENGINEERING COMPANY, INC. AND ARE NOT TO BE USED OR REPRODUCED IN WHOLE OR IN PART, WITHOUT THE WRITTEN CONSENT OF SANITARY MANAGEMENT & ENGINEERING COMPANY, INC.

REVISIONS

DATE	CHECK	BY
12/12/2017	TK	WBF
03/12/2018	TK	WBF
07/12/2018	TK	WBF
12/12/2018	TK	WBF

DRAWN

DATE	CHECK	NO.	BY
12/12/2017	TK	2	WBF
03/12/2018	TK	3	WBF
07/12/2018	TK	4	WBF
12/12/2018	TK		

CERTIFIED

SAMCO
Sanitary Management & Engineering Company, Inc.
1905 Lakeside Drive
317-577-1150 Fax 317-577-3642

PROJECT

JOB NO.

PREPARED FOR

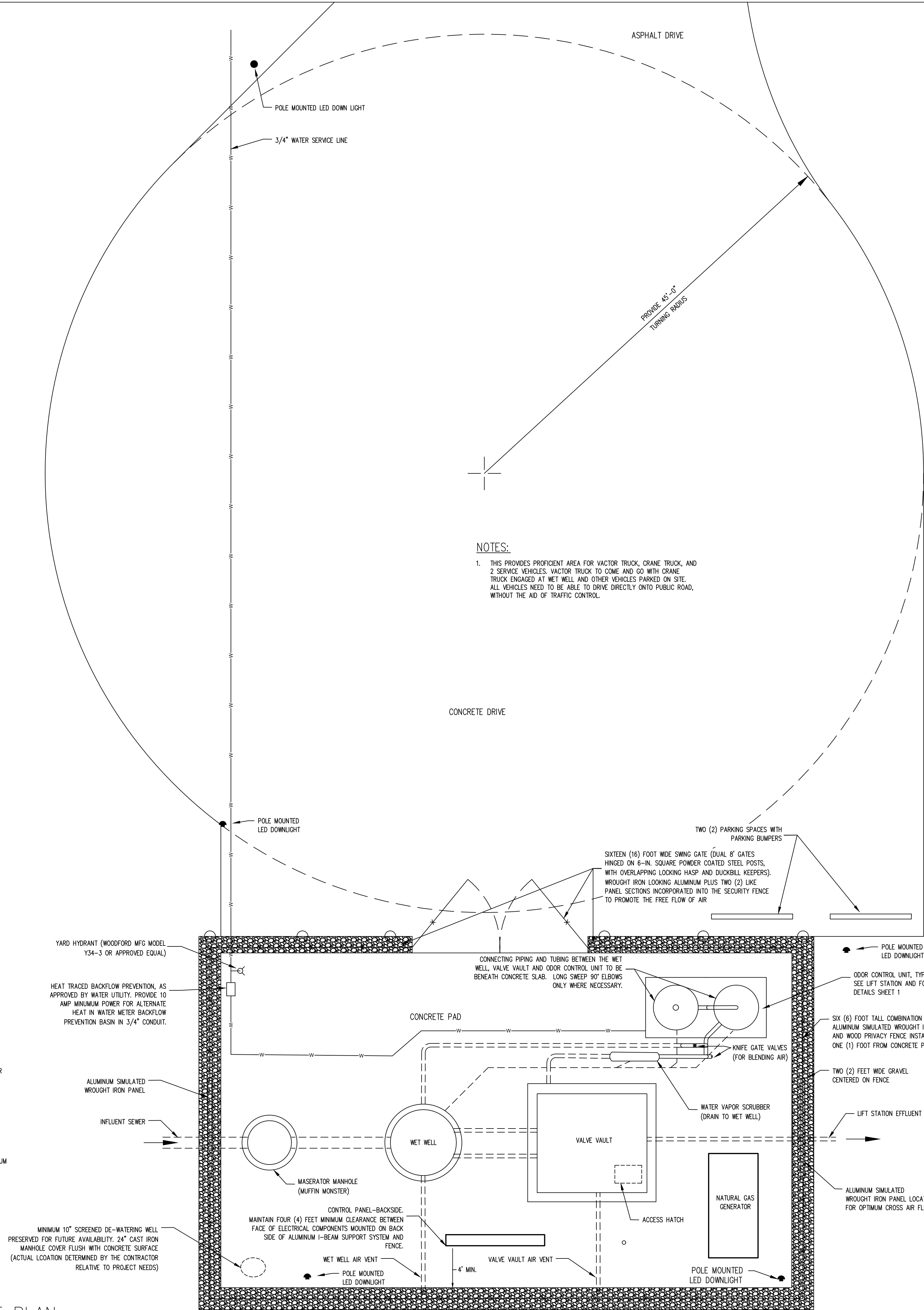
TITLE

LIFT STATION and FORCE MAIN DETAILS

SCALE: N/A

SHEET

SHEET 2 OF 4

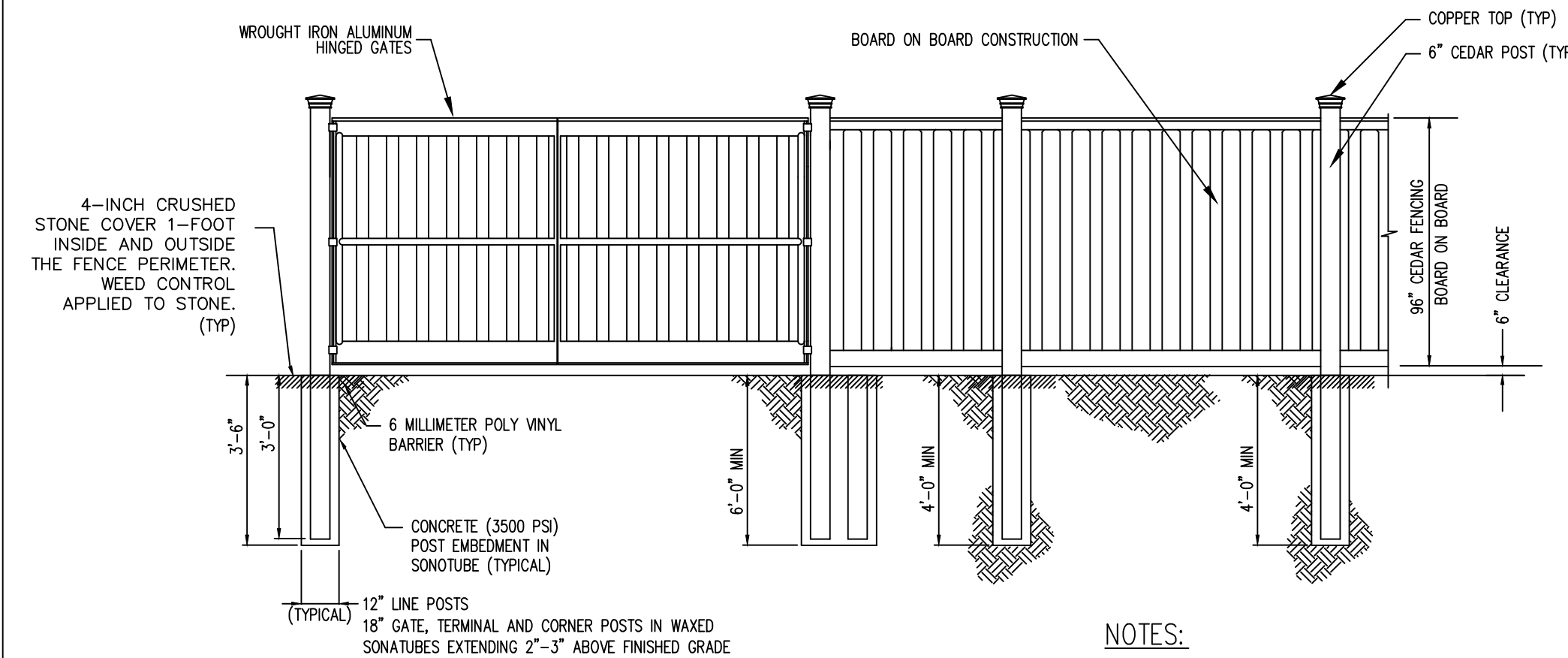


NOTES:

1. CONTRACTOR SHALL CONTACT THE UTILITIES ENGINEER PRIOR TO PURCHASING ANY EQUIPMENT FOR ANY LIFT STATION TO VERIFY PROPER INTERPRETATION OF SPECIFICATIONS AND PLANS.
2. SEE HSE' LIFT STATION AND FORCE MAIN SPECIFICATION SHEET FOR DETAILS OF EQUIPMENT.
3. THIS PLAN IS FOR GENERAL DESIGN PURPOSES ONLY.
4. ACCESS DRIVE MUST HAVE A MINIMUM OF FOURTEEN (14) FEET OF CLEARANCE FROM ALL UTILITY OR POWER POLES.
5. ESTABLISH PERMANENT BENCH MARK BEYOND OVERDIG.
6. ACREAGE BEING DONATED FOR LIFT STATION INCLUSIVE OF THE ABOVE STATED COMPONENTS PLUS SUFFICIENT WORKING SPACE TO STOCKPILE THE VOLUME OF SOIL EXCAVATED FOR THESE STRUCTURES.
7. PLANTINGS ON THE EXTERIOR OF THE SITE ARE TO BE SET AT A MINIMUM OF FIVE (5) FEET FROM THE FENCE EXTERIOR, AS DETERMINED BY THE MATURE DRIP LINE.

NOTES:

1. THIS PROVIDES PROFICIENT AREA FOR VACTOR TRUCK, CRANE TRUCK, AND 2 SERVICE VEHICLES. VACTOR TRUCK TO COME AND GO WITH CRANE TRUCK ENGAGED AT WET WELL AND OTHER VEHICLES PARKED ON SITE. ALL VEHICLES NEED TO BE ABLE TO DRIVE DIRECTLY ONTO PUBLIC ROAD, WITHOUT THE AID OF TRAFFIC CONTROL.

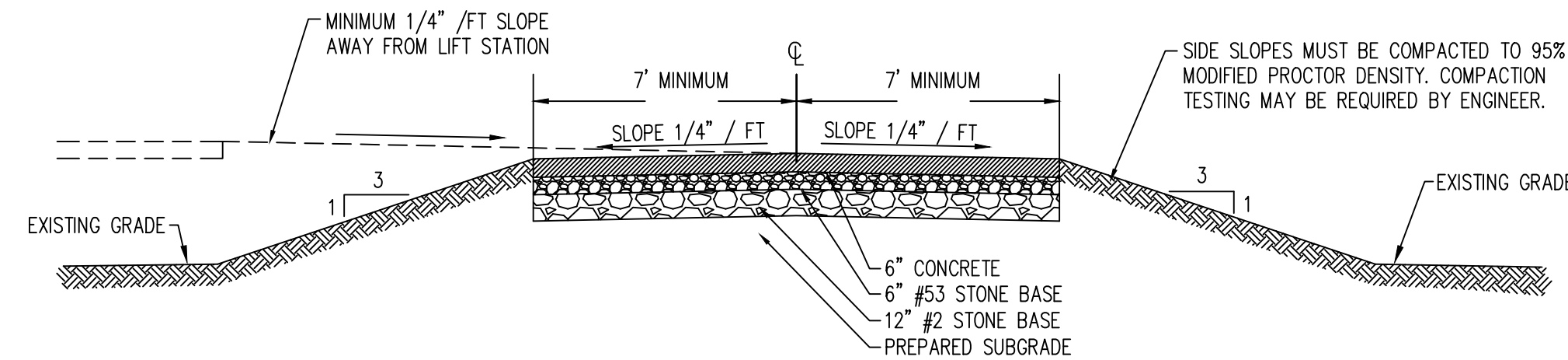


NOTES:

1. GATE SYSTEM COMPRISED OF 6"x6" STEEL HINGE POSTS SET IN 18" WAXED SONATUBES WITH 16" WROUGHT IRON LOOKING ALUMINUM GATES. THE GATES ARE TO BE LATCHED WITH A GUST RESISTANT RESTRAINT SYSTEM.

CEDAR FENCE DETAIL

NO SCALE



1. ACCESS DRIVE RADII TO BE A MINIMUM OF 45 FEET.
2. SLOPE ALONG CENTERLINE SHALL NOT EXCEED 5.00%
3. FOR CENTERLINE GRADE CHANGES OF GREATER THAN 2.00%, A 25' VERTICAL CURVE SHALL BE INSTALLED.

4. CONTRACTOR MUST CONSIDER THE IMPACT TO LOCAL DRAINAGE. CULVERTS MUST BE INSTALLED TO PREVENT SURFACE DRAINAGE OVER DRIVE.
5. PREPARED SUBGRADE PER INDIANA DEPARTMENT OF TRANSPORTATION STANDARD SPECIFICATION No. 207.

CONCRET ACCESS DRIVE DETAIL

NO SCALE

DISCLAIMER

HSE'S LIFT STATION PLAN, LIFT STATION AND FORCE MAIN DETAILS AND LIFT STATION AND FORCE MAIN SPECIFICATIONS ARE COMPLEMENTARY IN NATURE AND SHOULD NOT BE INTERPRETED INDIVIDUALLY WITHOUT REFERENCE TO THE OTHER SHEETS.

REVISED 11/17/2025

THESE DRAWINGS AND THE IDEAS, DESIGNS AND CONCEPTS CONTAINED HEREIN ARE THE EXCLUSIVE INTELLECTUAL PROPERTY OF SANITARY MANAGEMENT & ENGINEERING COMPANY, INC., AND ARE NOT TO BE USED OR REPRODUCED IN WHOLE OR IN PART, WITHOUT THE WRITTEN CONSENT OF SANITARY MANAGEMENT & ENGINEERING COMPANY, INC.
©2018 BY SANITARY MANAGEMENT & ENGINEERING COMPANY, INC.

REVISIONS

BY	DATE	CHECK NO.	DATE	CHECK
1	12/17/2025	1	12/17/2025	1K
2	11/17/2025	2	11/17/2025	1K

DRAWN

DATE	DATE	DATE	DATE	DATE
12/17/2025	12/17/2025	12/17/2025	12/17/2025	12/17/2025

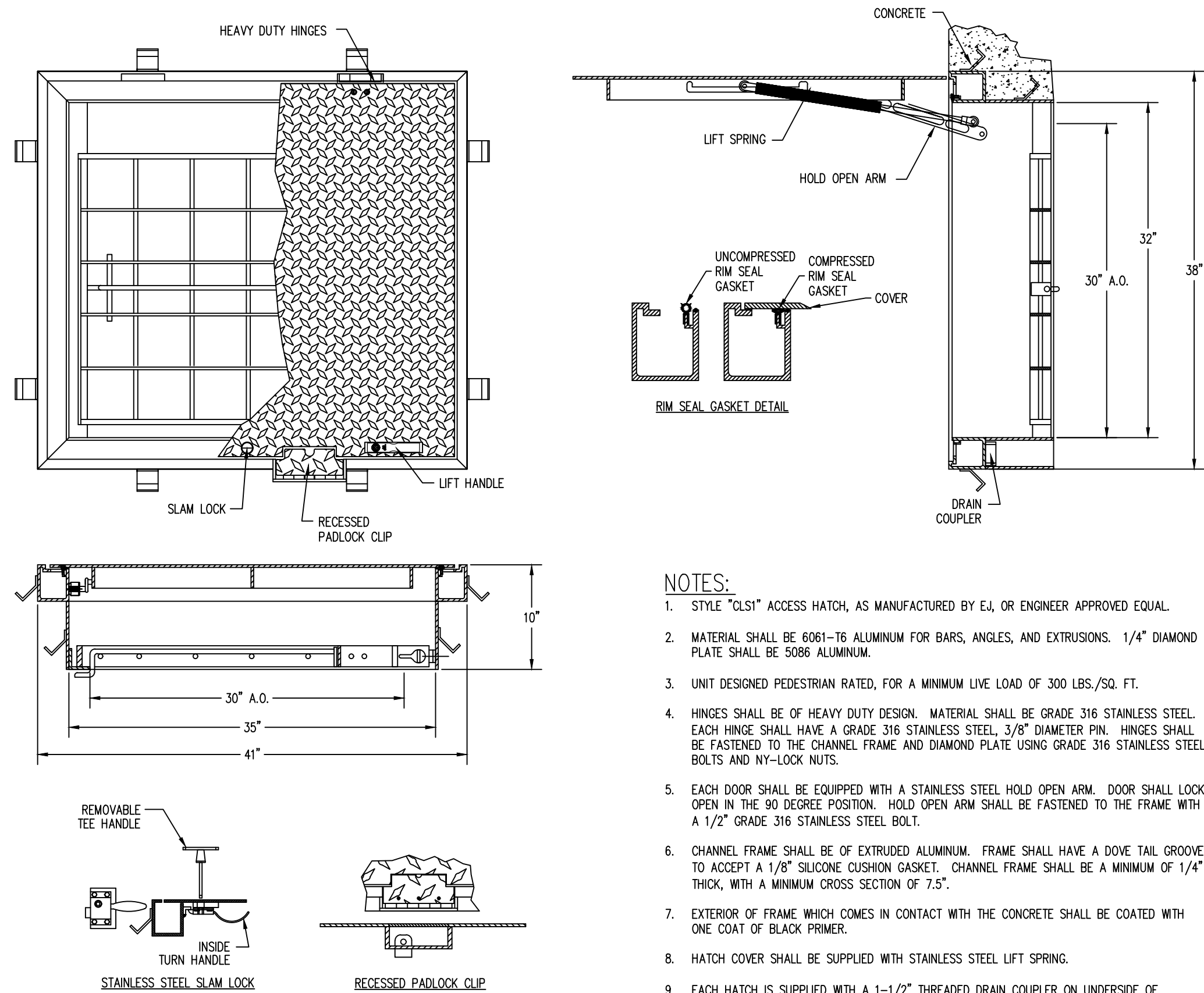
SAMCO
Sanitary Management & Engineering Company, Inc.
1905 Lakeside Drive
317-577-1150 Fax 317-577-3642

JOB NO.

PROJECT
PREPARED FOR
TITLE
SCALE: N/A

SHEET

SHEET 3 of 4

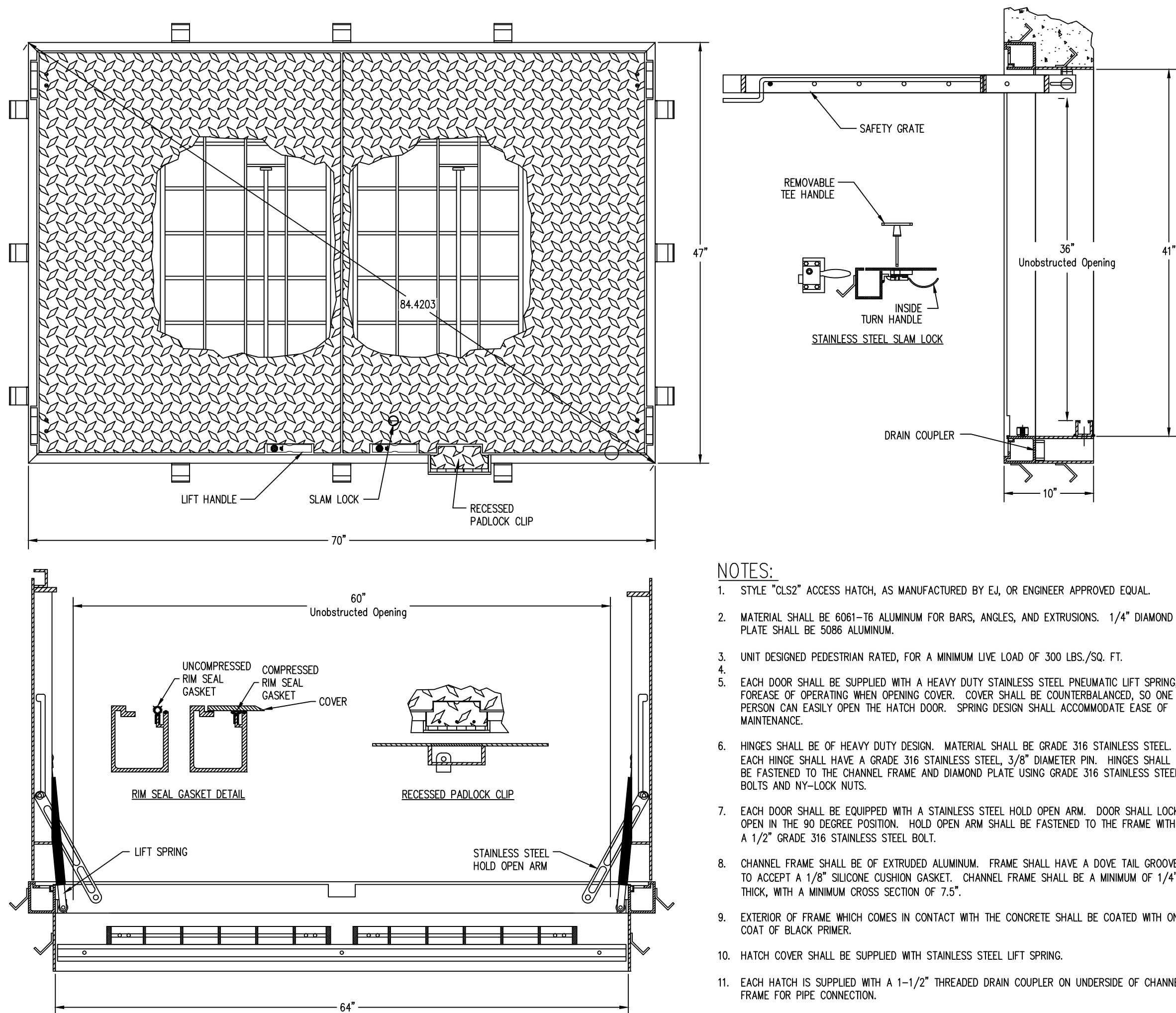


NOTES:

1. STYLE "CLS2" ACCESS HATCH, AS MANUFACTURED BY E4, OR ENGINEER APPROVED EQUAL.
2. MATERIAL SHALL BE 6061-T6 ALUMINUM FOR BARS, ANGLES, AND EXTRUSIONS. 1/4" DIAMOND PLATE SHALL BE 5086 ALUMINUM.
3. UNIT DESIGNED PEDESTRIAN RATED, FOR A MINIMUM LIVE LOAD OF 300 LBS./SQ. FT.
4. HINGES SHALL BE OF HEAVY DUTY DESIGN. MATERIAL SHALL BE GRADE 316 STAINLESS STEEL. EACH HINGE SHALL HAVE A GRADE 316 STAINLESS STEEL, 3/8" DIAMETER PIN. HINGES SHALL BE FASTENED TO THE CHANNEL FRAME AND DIAMOND PLATE USING GRADE 316 STAINLESS STEEL BOLTS AND NY-LOCK NUTS.
5. EACH DOOR SHALL BE EQUIPPED WITH A STAINLESS STEEL HOLD OPEN ARM. DOOR SHALL LOCK OPEN IN THE 90 DEGREE POSITION. HOLD OPEN ARM SHALL BE FASTENED TO THE FRAME WITH A 1/2" GRADE 316 STAINLESS STEEL BOLT.
6. CHANNEL FRAME SHALL BE OF EXTRUDED ALUMINUM. FRAME SHALL HAVE A DOVE TAIL GROOVE TO ACCEPT A 1/8" SILICONE CUSHION GASKET. CHANNEL FRAME SHALL BE A MINIMUM OF 1/4" THICK, WITH A MINIMUM CROSS SECTION OF 7.5".
7. EXTERIOR OF FRAME WHICH COMES IN CONTACT WITH THE CONCRETE SHALL BE COATED WITH ONE COAT OF BLACK PRIMER.
8. HATCH COVER SHALL BE SUPPLIED WITH STAINLESS STEEL LIFT SPRING.
9. EACH HATCH IS SUPPLIED WITH A 1-1/2" THREADED DRAIN COUPLER ON UNDERSIDE OF CHANNEL FRAME FOR PIPE CONNECTION.
10. ALL HARDWARE SHALL BE STAINLESS STEEL.
11. EACH HATCH SHALL BE SUPPLIED WITH A GRADE 316 STAINLESS STEEL SLAM LOCK, WITH KEY WAY PROJECTED BY A THREADED PLUG. PLUG SHALL BE FLUSH WITH THE TOP OF THE 1/4" DIAMOND PLATE. SLAM LOCK SHALL BE FASTENED WITH FOUR GRADE 316 STAINLESS STEEL BOLTS AND WASHERS.
12. EACH HATCH SHALL BE EQUIPPED WITH AN ALUMINUM LIFT HANDLE. THE LIFT HANDLE SHALL BE FLUSH WITH THE TOP OF THE 1/4" DIAMOND PLATE.
13. UNITS SHALL BE SUPPLIED WITH ORANGE POWDER COATED HINGED SAFETY GRATES TO PROVIDE PROTECTION AGAINST FALL THROUGH AND TO CONTROL ACCESS TO THE CONFINED SPACE.
14. EACH UNIT SHALL BE SUPPLIED WITH RIMSEAL GASKET.
15. EACH HATCH SHALL BE SUPPLIED WITH A RECESSED PADLOCK CLIP (PADLOCK SUPPLIED BY OTHERS).

PEDESTRIAN RATED ALUMINUM SAFE HATCH®

NO SCALE



NOTES:

1. STYLE "CLS2" ACCESS HATCH, AS MANUFACTURED BY E4, OR ENGINEER APPROVED EQUAL.
2. MATERIAL SHALL BE 6061-T6 ALUMINUM FOR BARS, ANGLES, AND EXTRUSIONS. 1/4" DIAMOND PLATE SHALL BE 5086 ALUMINUM.
3. UNIT DESIGNED PEDESTRIAN RATED, FOR A MINIMUM LIVE LOAD OF 300 LBS./SQ. FT.
4. EACH DOOR SHALL BE SUPPLIED WITH A HEAVY DUTY STAINLESS STEEL PNEUMATIC LIFT SPRING, FOREASE OF OPERATING WHEN OPENING COVER. COVER SHALL BE COUNTERBALANCED, SO ONE PERSON CAN EASILY OPEN THE HATCH DOOR. SPRING DESIGN SHALL ACCOMMODATE EASE OF MAINTENANCE.
5. HINGES SHALL BE OF HEAVY DUTY DESIGN. MATERIAL SHALL BE GRADE 316 STAINLESS STEEL. EACH HINGE SHALL HAVE A GRADE 316 STAINLESS STEEL, 3/8" DIAMETER PIN. HINGES SHALL BE FASTENED TO THE CHANNEL FRAME AND DIAMOND PLATE USING GRADE 316 STAINLESS STEEL BOLTS AND NY-LOCK NUTS.
6. EACH DOOR SHALL BE EQUIPPED WITH A STAINLESS STEEL HOLD OPEN ARM. DOOR SHALL LOCK OPEN IN THE 90 DEGREE POSITION. HOLD OPEN ARM SHALL BE FASTENED TO THE FRAME WITH A 1/2" GRADE 316 STAINLESS STEEL BOLT.
7. CHANNEL FRAME SHALL BE OF EXTRUDED ALUMINUM. FRAME SHALL HAVE A DOVE TAIL GROOVE TO ACCEPT A 1/8" SILICONE CUSHION GASKET. CHANNEL FRAME SHALL BE A MINIMUM OF 1/4" THICK, WITH A MINIMUM CROSS SECTION OF 7.5".
8. EXTERIOR OF FRAME WHICH COMES IN CONTACT WITH THE CONCRETE SHALL BE COATED WITH ONE COAT OF BLACK PRIMER.
9. HATCH COVER SHALL BE SUPPLIED WITH STAINLESS STEEL LIFT SPRING.
10. EACH HATCH IS SUPPLIED WITH A 1-1/2" THREADED DRAIN COUPLER ON UNDERSIDE OF CHANNEL FRAME FOR PIPE CONNECTION.
11. EACH HATCH SHALL BE SUPPLIED WITH A GRADE 316 STAINLESS STEEL SLAM LOCK, WITH KEY WAY PROJECTED BY A THREADED PLUG. PLUG SHALL BE FLUSH WITH THE TOP OF THE 1/4" DIAMOND PLATE. SLAM LOCK SHALL BE FASTENED WITH FOUR GRADE 316 STAINLESS STEEL BOLTS AND WASHERS.
12. EACH HATCH SHALL BE EQUIPPED WITH AN ALUMINUM LIFT HANDLE. THE LIFT HANDLE SHALL BE FLUSH WITH THE TOP OF THE 1/4" DIAMOND PLATE.
13. UNITS SHALL BE SUPPLIED WITH ORANGE POWDER COATED HINGED SAFETY GRATES TO PROVIDE PROTECTION AGAINST FALL THROUGH AND TO CONTROL ACCESS TO THE CONFINED SPACE.
14. EACH UNIT SHALL BE SUPPLIED WITH RIMSEAL GASKET.
15. EACH HATCH SHALL BE SUPPLIED WITH A RECESSED PADLOCK CLIP (PADLOCK SUPPLIED BY OTHERS).

PEDESTRIAN RATED ALUMINUM SAFE HATCH®

NO SCALE

DISCLAIMER

HSE'S LIFT STATION PLAN, LIFT STATION AND FORCE MAIN DETAILS AND LIFT STATION AND FORCE MAIN SPECIFICATIONS ARE COMPLEMENTARY IN NATURE AND SHOULD NOT BE INTERPRETED INDIVIDUALLY WITHOUT REFERENCE TO THE OTHER SHEETS.

REVISED 4/15/2021

THESE DRAWINGS AND THE IDEAS, DESIGNS AND CONCEPTS CONTAINED HEREIN ARE THE EXCLUSIVE INTELLECTUAL PROPERTY OF SANITARY MANAGEMENT & ENGINEERING COMPANY, INC. AND ARE NOT TO BE USED OR REPRODUCED IN WHOLE OR IN PART, WITHOUT THE WRITTEN CONSENT OF SANITARY MANAGEMENT & ENGINEERING COMPANY, INC. ©2018 BY SANITARY MANAGEMENT & ENGINEERING COMPANY, INC.

REVISIONS

BY	DATE	CHECK NO.	BY	DATE	CHECK
1	12/2/2017	1	WFF	12/2/2017	1

DRAWN

1	12/2/2017	1	WFF	12/2/2017	1
---	-----------	---	-----	-----------	---

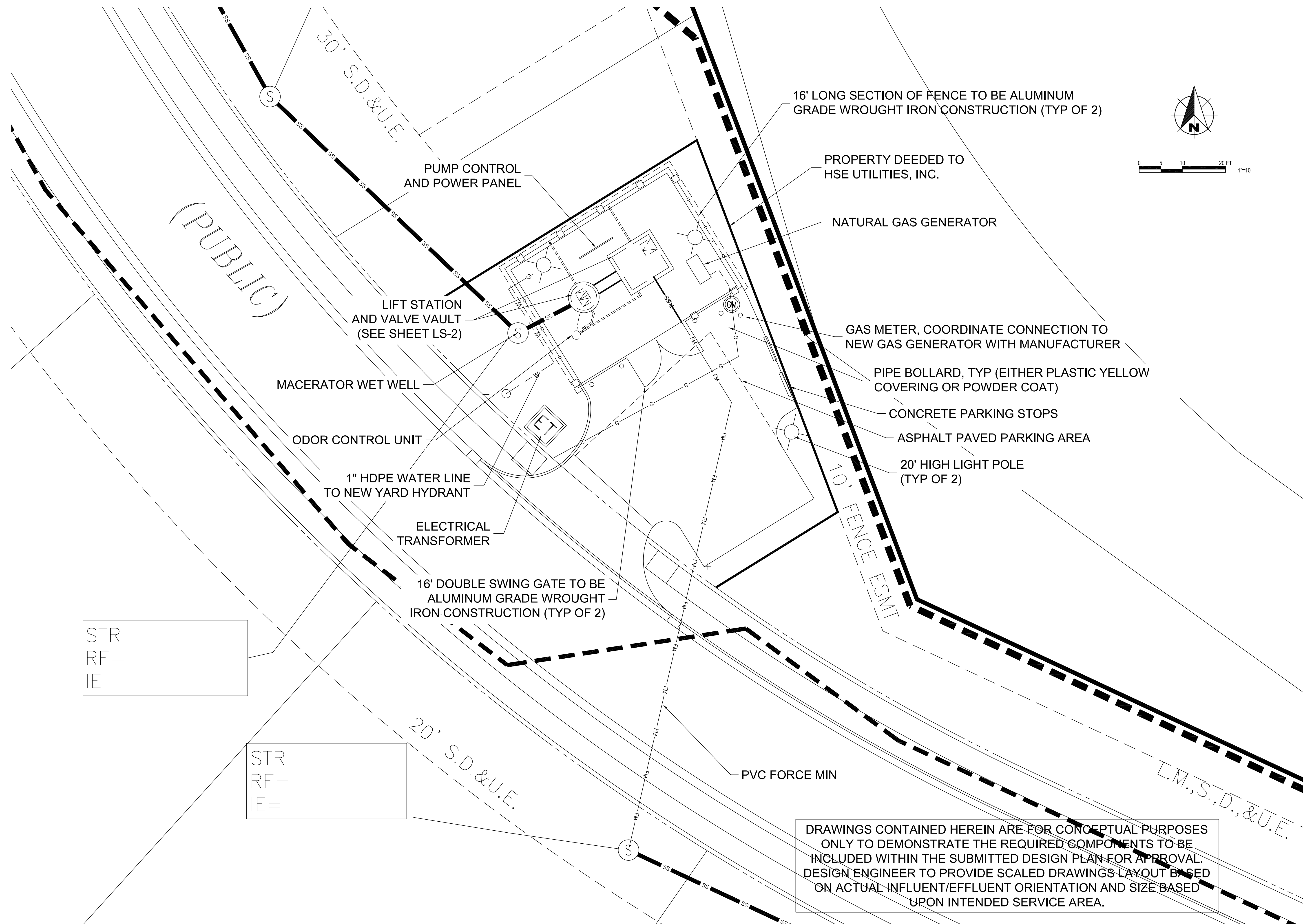
CERTIFIED

SAMCO
Sanitary Management &
Engineering Company, Inc.
11905 Lakeside Drive
Houston, TX 77033
317-577-1150 Fax 317-577-3642

JOB NO.

PROJECT
PREPARED FOR
TITLE
TYPICAL LIFT STATION AND FORCE MAIN DETAILS

SHEET

[illegible]

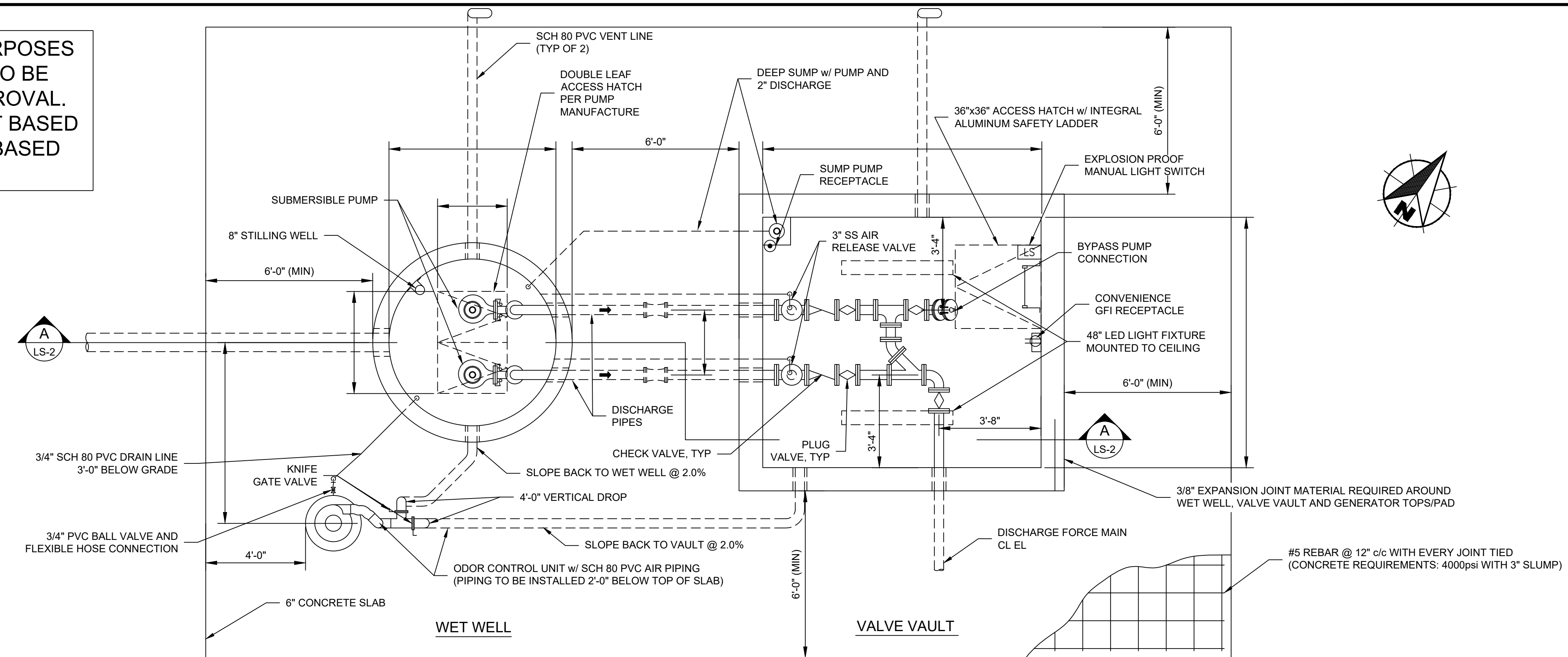
LIFT STATION SITE PLAN
PROJECT EXAMPLE ONLY

Date _____

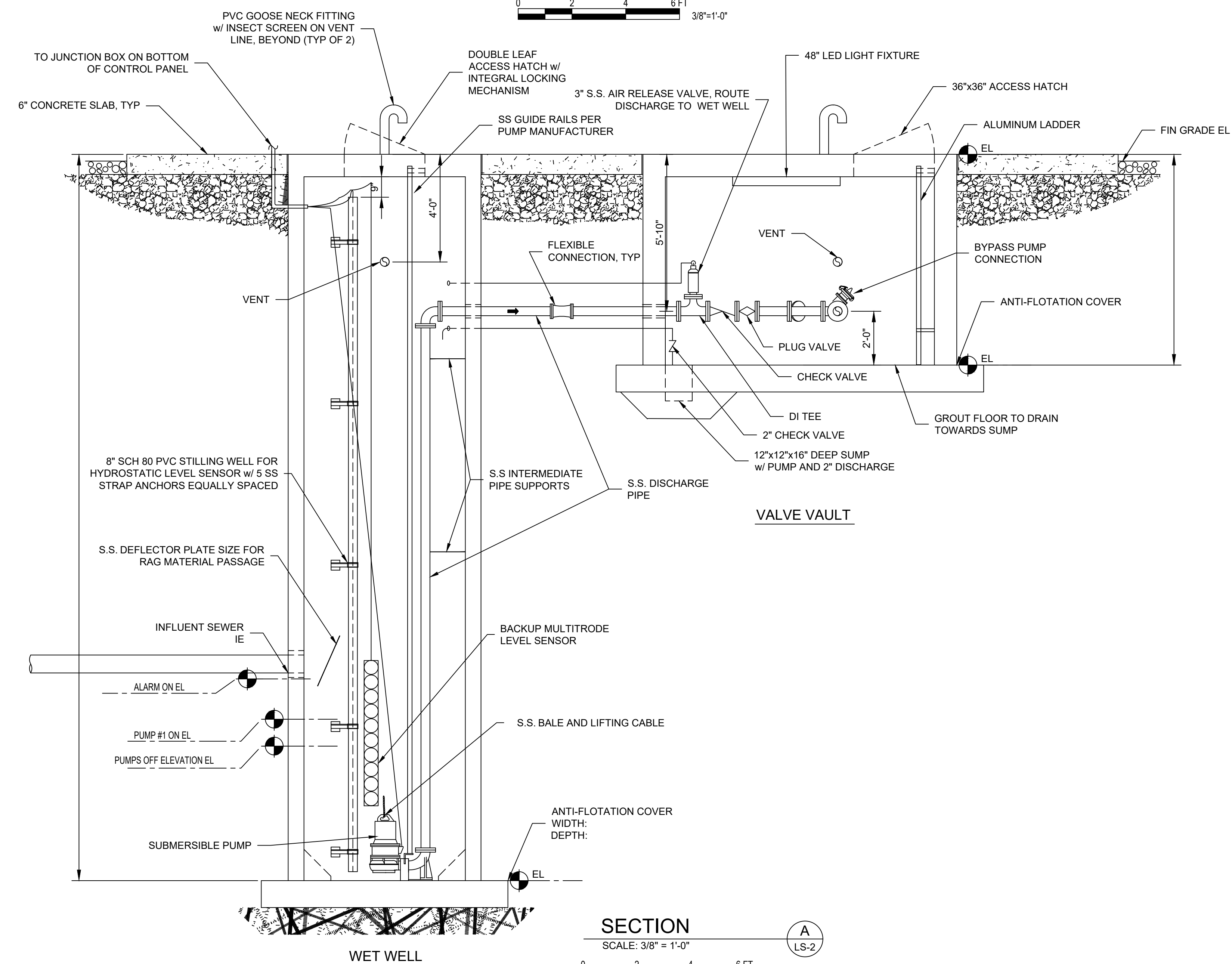
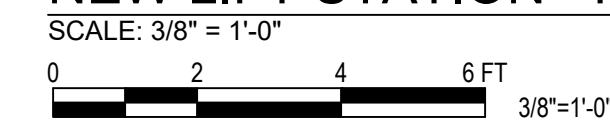


Sheet **LS-1**

DRAWINGS CONTAINED HEREIN ARE FOR CONCEPTUAL PURPOSES ONLY TO DEMONSTRATE THE REQUIRED COMPONENTS TO BE INCLUDED WITHIN THE SUBMITTED DESIGN PLAN FOR APPROVAL. DESIGN ENGINEER TO PROVIDE SCALED DRAWINGS LAYOUT BASED ON ACTUAL INFLUENT/EFFLUENT ORIENTATION AND SIZE BASED UPON INTENDED SERVICE AREA.



NEW LIFT STATION - PLAN



NOTE:
ENTIRE EXCAVATION MUST BE
BACKFILLED WITH INDOT #8 STONE.

[illegible]

0
1
2
3
4
5
6
7
8
9
A
B
C
D
E
F
G
H
I
J
K
L
M
N
O
P
Q
R
S
T
U
V
W
X
Y
Z

LIFT STATION DETAILS

PROJECT EXAMPLE ONLY

CERTIFIED BY:

ate



811 CALLS IN INDIANA
1-800-382-5544 CALL TOLL FREE

Drawn By:

IN

Checked By: CJ

Quality Assurance:

NH

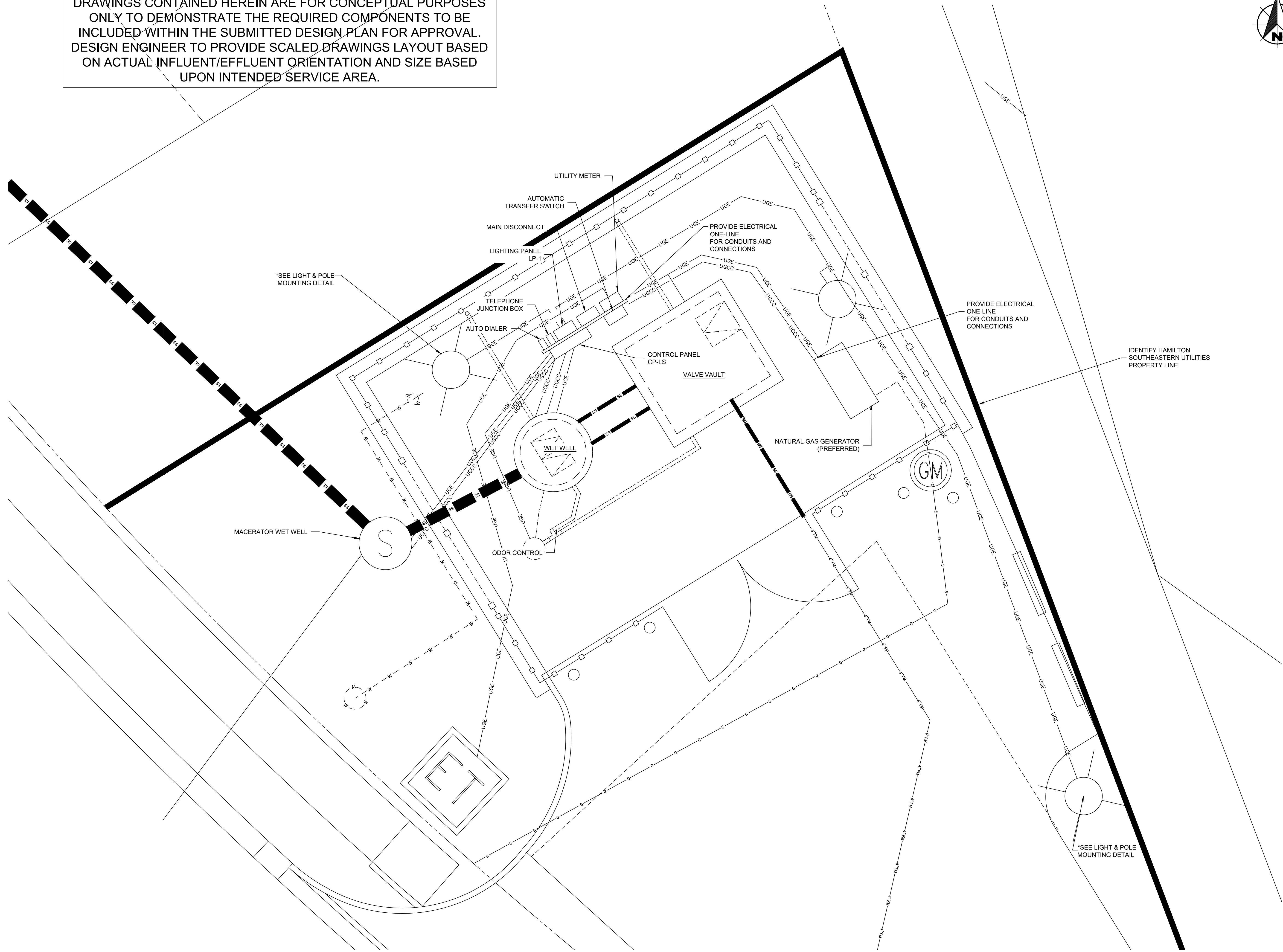
ent

15

ate

100

DRAWINGS CONTAINED HEREIN ARE FOR CONCEPTUAL PURPOSES ONLY TO DEMONSTRATE THE REQUIRED COMPONENTS TO BE INCLUDED WITHIN THE SUBMITTED DESIGN PLAN FOR APPROVAL. DESIGN ENGINEER TO PROVIDE SCALED DRAWINGS LAYOUT BASED ON ACTUAL INFLUENT/EFFLUENT ORIENTATION AND SIZE BASED UPON INTENDED SERVICE AREA.



Revisions	Issue	Date	Description

HAMILTON SOUTHEASTERN UTILITIES, INC.

LIFT STATION ELECTRICAL SITE PLAN
PROJECT EXAMPLE ONLY

CERTIFIED BY:

Date



811
FOR CALLS IN INDIANA
1-800-382-5544
CALL 811 FIRST

Drawn By:
MLN

Checked By:
KCJ

Quality Assurance:
RWH

Scale: 1"=10'

Sheet
LS-3

Date

Project Number

A	3°C, 4 # ?
B	3°C, 3 # ? #N, #G
C	3°C, 3 # ?, #G
D	3/4°C, #G
E	1°C, 2 # ?, #G
F	1" C, 4 # ?
G	1°C, 6 # ?, #G
H	MANUFACTURER CABLE
I	1°C, 2/C #TPS
J	1°C, 12 # ?
K	3°C, MANUFACTURER CABLE
L	1°C, 2 # ?, #G AND 1°C SPARE (STUB UP AND CAP AT BOTH ENDS)
M	1°C, 2 # ?, #G

UTILITY TRANSFORMER

NEW METER

MAIN FUSIBLE DISCONNECT SWITCH
480V, 3Ø, 4W
NEMA 4X, STAINLESS STEEL,
SERVICE ENTRANCE RATED

240V, 2-POLE, NEMA 4X,
SST, DISCONNECT SWITCH.
ONLY CONNECT 1-POLE,
INITIAL ODOR CONTROL IS
120V, 1-PHASE

ODOR SCRUBBER

VALVE VAULT HATCH
OPEN LIMIT SWITCH

48" WEATHER TIGHT
LED CEILING LIGHTING

WEATHER TIGHT
LED WALL LIGHTING

VALVE VAULT

GFI OUTLET

SUMP EFFLUENT
PUMP RECEPTACLE

SITE POLE LIGHT

SITE POLE LIGHT

SITE LIGHTS
DIMMER SWITCH

KVA COMBINATION
POWER UNIT
LP-1

AUTOMATIC
TRANSFER
SWITCH

SITE GFI
RECEPTACLE

kW, 480V, 3Ø, 4W
GENERATOR

GROUND ROD

GROUND ROD

CELLULAR
ANTENNA

CONTROL PANEL
CP-LS

BACKUP MPE ROD LEVEL
CONTROL SYSTEM

PUMP
NO. 1

PUMP
NO. 2

Labels: A, B, C, D, E, F, G, H, K, L, M, 1, 2, 3, 4

- ① CONDUITS FOR PUMP CABLES, ROD LEVEL CABLES & SUBMERSIBLE PRESSURE TRANSMITTER. FURNISHED AND INSTALLED BY THE CONTRACTOR
- ② LEVEL SENSOR CABLE AND STAINLESS STEEL SUPPORT CABLE. PVC STILLING TUBE MOUNTED TO THE SIDE OF THE WELL AND SUPPORTED EVERY 5' WITH 3/16 STAINLESS STEEL HARDWARE. POSITION STILLING TUBE SO THAT LEVEL SENSOR MAY BE PULLED UP THROUGH HATCH. SUBMERSIBLE LEVEL TRANSMITTER TO BE LOCATED BELOW THE LOWEST ROD LEVEL SEGMENT.
- ③ STAINLESS STEEL STRAIN RELIEF CABLE GRIP AND STAINLESS STEEL HOOK FOR SUPPORT OF ALL POWER AND CONTROL CABLES IN THE WET WELL, ACCESSIBLE FROM WET WELL HATCH.
- ④ HIGH LEVEL ALARM BEACON

1. BONDED 3 POINT GROUNDED SYSTEM BEYOND THE OVER DIG, IN ALL NATURAL, UNDISTURBED SOIL. ELECTRICIAN / ELECTRICAL CONTRACTOR TO PROVE / VALIDATE GROUND ATTACHMENT.
2. ALL PANELS TO BE NEMA 4X STAINLESS STEEL.

SCALE: NO SCALE

- Control Cabinet (Nema 4X)
- Control Cabinet Back Plate
- Control Cabinet Inner door Kit (Swing Out Panels)
- Control Cabinet Heater
- Control Cabinet Document Holder X2 (1 on each door)
- Control Cabinet Cooling Fan & Filter Kit
- Cooling Fan Stainless all weather covers for fan kit
- Junction Boxes Cabinet (NEMA 4X)
- Junction Boxes Back Plate
- Junction Boxes Feed Through Wire Way

Siemens 100amp Breaker Style Disconnect 4X cabinet
100amp main breaker (or Equal)
Motor Rated Breakers (or Equal)
15amp breaker (or Equal)
Aitech Control Breaker 20a 2p (or Equal)
Aitech Control Breaker 20a 1p (or Equal)
Aitech Control Breaker 16a 1p (or equal)
Aitech Control Breaker 4a 1p (or Equal)
480v to 120v open type IP20
Din Rail Receptacles
PLC
Sola Tracking Filter
Sola Power Supplies 24vdc (2 Will be needed)
Sola Diode
Sola UPS
Sola Battery
Sierra Wireless Cell Modem
Modem Din Rail Mount
Sierra Wireless Power Supply
Cell Modem Antenna
Start Relay
Seal Relays
PLC Live Relays
Relay Base
Pilot Light (red) Seal Failure
Pilot Light (green) Pump On
30mm selector switch (HOA 3 position)
Push Button (For Reset)
Terminal Blocks
End Anchors
Din Rail 6'
Wireways w/covers 2x2 (white)
Wireways w/covers 1x2 (white)
MPE Level Probe
Level Probe Control Relay
Transducer
Transducer Surge Arrester
Transducer Below
Horse Power compatible VFD
LCP mounting kit
LCP Panels
MCB 101 card

- Poles for Area Lighting
- Pole Base Cover Kit
- Pole Light Heads
- Pole Anchor Kit
- Pole Light Commission Tool
- Valve Vault Lighting
- Mini-Substation LP-1, 10KVA, 480V to 240/120V
- Surge Protection Device
- Site Convenience Receptacle
- Valve Vault Convenience Receptacle
- Valve Vault Sump Effluent Pump Receptacle
- Valve Vault Lights Hatch Open Limit Switch

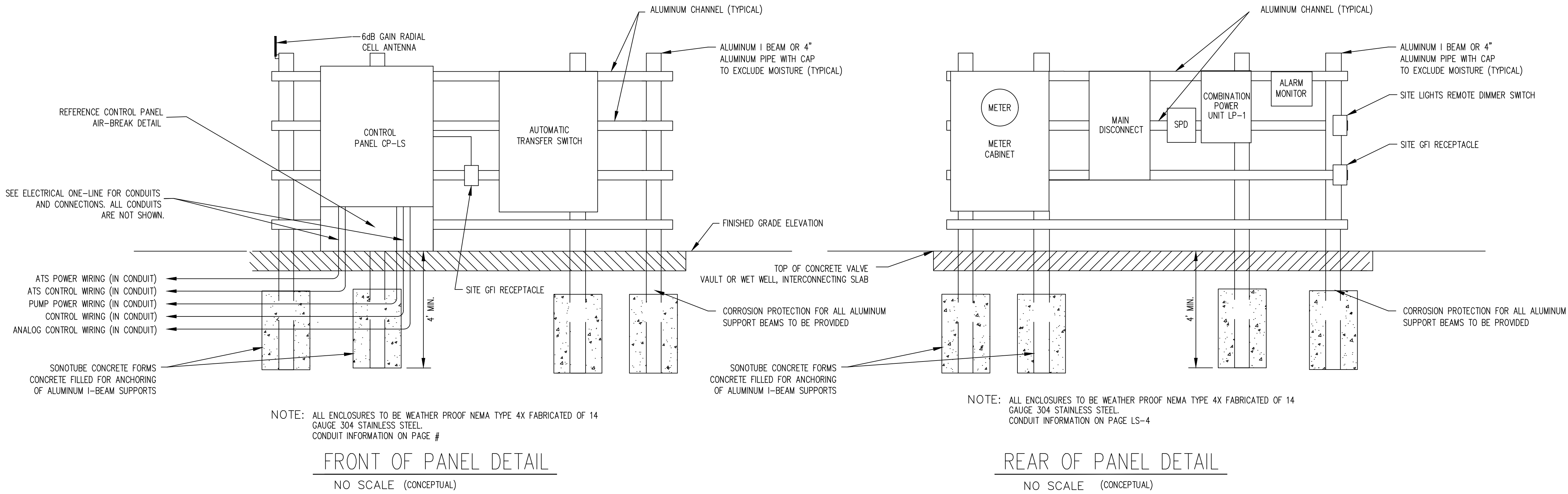
MTU Generator Natural Gas
Generator to have sound barrier Enclosure
ASCO Automatic Transfer Switch (NEMA 4X)

Manufacture	Part Number
Hoffman	Hoff A62H4818SSLP3PT
Hoffman	Hoff A60P48
Hoffman	Match Cabinet Part number (Hoff A62H4818SSLP3PT)
Hoffman	DAH2001A 115Volt 200Watt
Hoffman	ADP2
Rittal	SK3243.110
Rittal	SK3243.080
Hoffman	A16H1208SSLP
Hoffman	A16P12
Hoffman	F66W24SS
Siemens	100A
Eaton	FD3100L
Eaton	HMCP 5 Amp
Eaton	FD3015L
Altech	2D20UL
Altech	1D20UL
Altech	1D16UL
Altech	1D4UL
Emerson	CE2000MH 2KVA
Allen Bradley	1492-REC15
Allen Bradley	1769-L24ER-QBFC1B
Sola	STFE100-10N
Sola	SDN2.5-24-100P
Sola	SDN2.5-20 RED
Sola	SDU 10-24
Sola	SDU 24 BAT
Sierra Wireless	AirLink RV50 (DC)NA
Sierra Wireless	Din Rail RV50 Mounting Bracket
Sierra Wireless	AC-12VDC Adapter for GX Series, LS5300 RV50, MP70,CG
Panorama Antenna	Low Profile 2x2 MiMO LTE/Cell 9' Cable SMA(N) Threaded Bolt
Allen Bradley 8 Pin	700-HA32Z24
Macromatic 8 Pin	SFP120A100
Allen Bradley 8 Pin	700-HA32Z24
Allen Bradley 8 Pin	700-HN100
Allen Bradley	800T-Q24R
Allen Bradley	800T-Q24G
Allen Bradley	800T-J2A
Allen Bradley	800T (Type 4,13)
Allen Bradely	1492-J4
Allen Bradley	1492-EAJ35
Allen Bradely	1' x 1-3/8" x 3' Standard Size din rail
Panduit	Standard White
Panduit	Standard White
MPElectronics	115-10-100
MPElectronics	LPC420R
MPElectronics	LM-10-100
MPElectronics	LM Surge
MPElectronics	TVB1
Dan Foss	VLT Aqua Drive 2HP
Dan Foss	130B1117 (one for each pump)
Dan Foss	130B1107 (one for each pump)
Dan Foss	Option B 130B1212 (one per VFD)

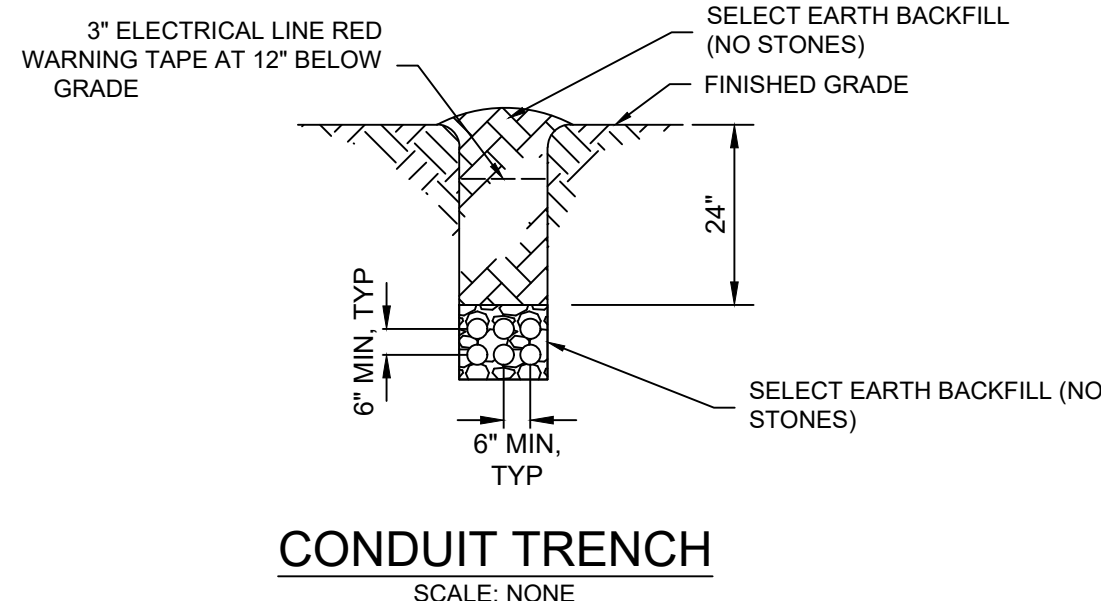
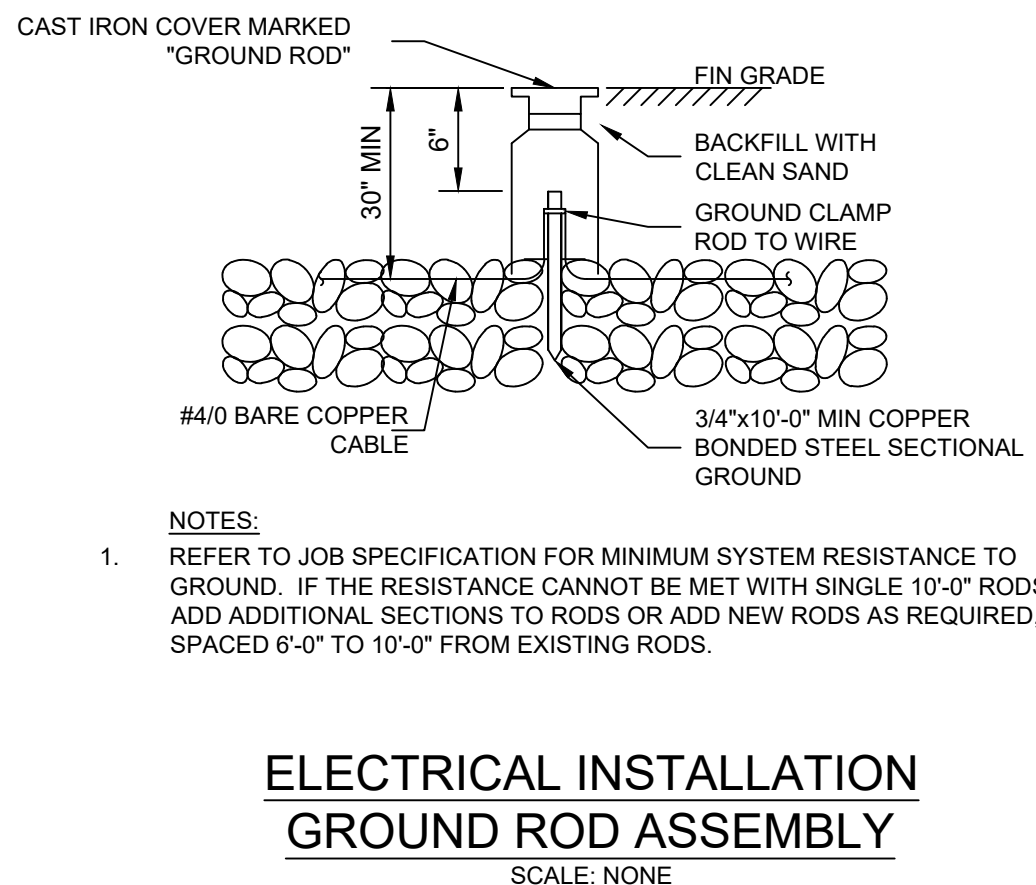
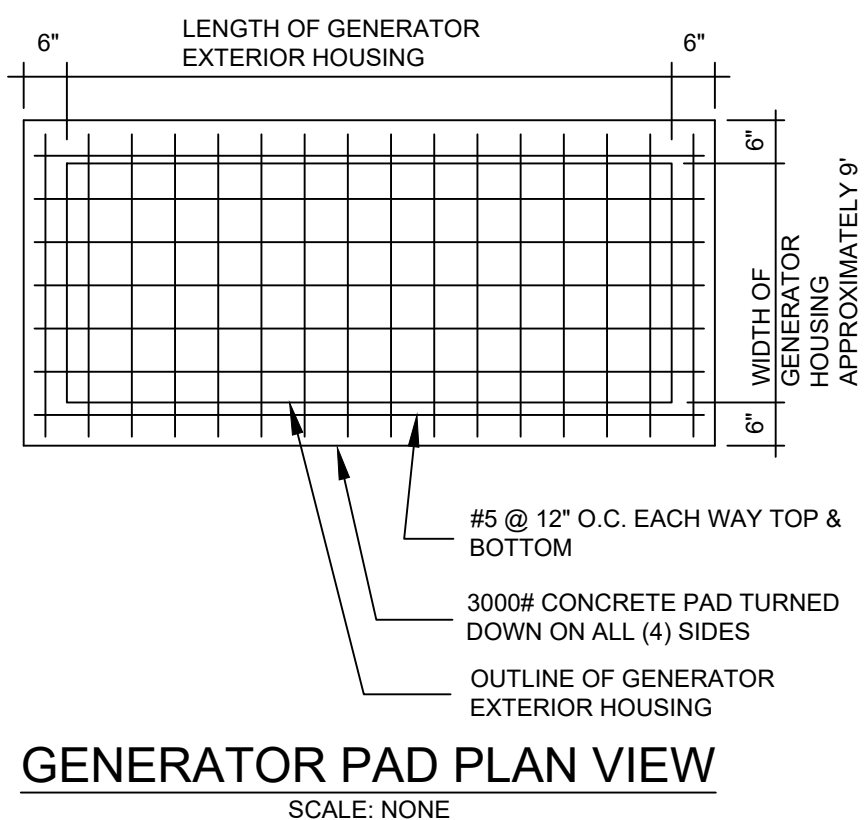
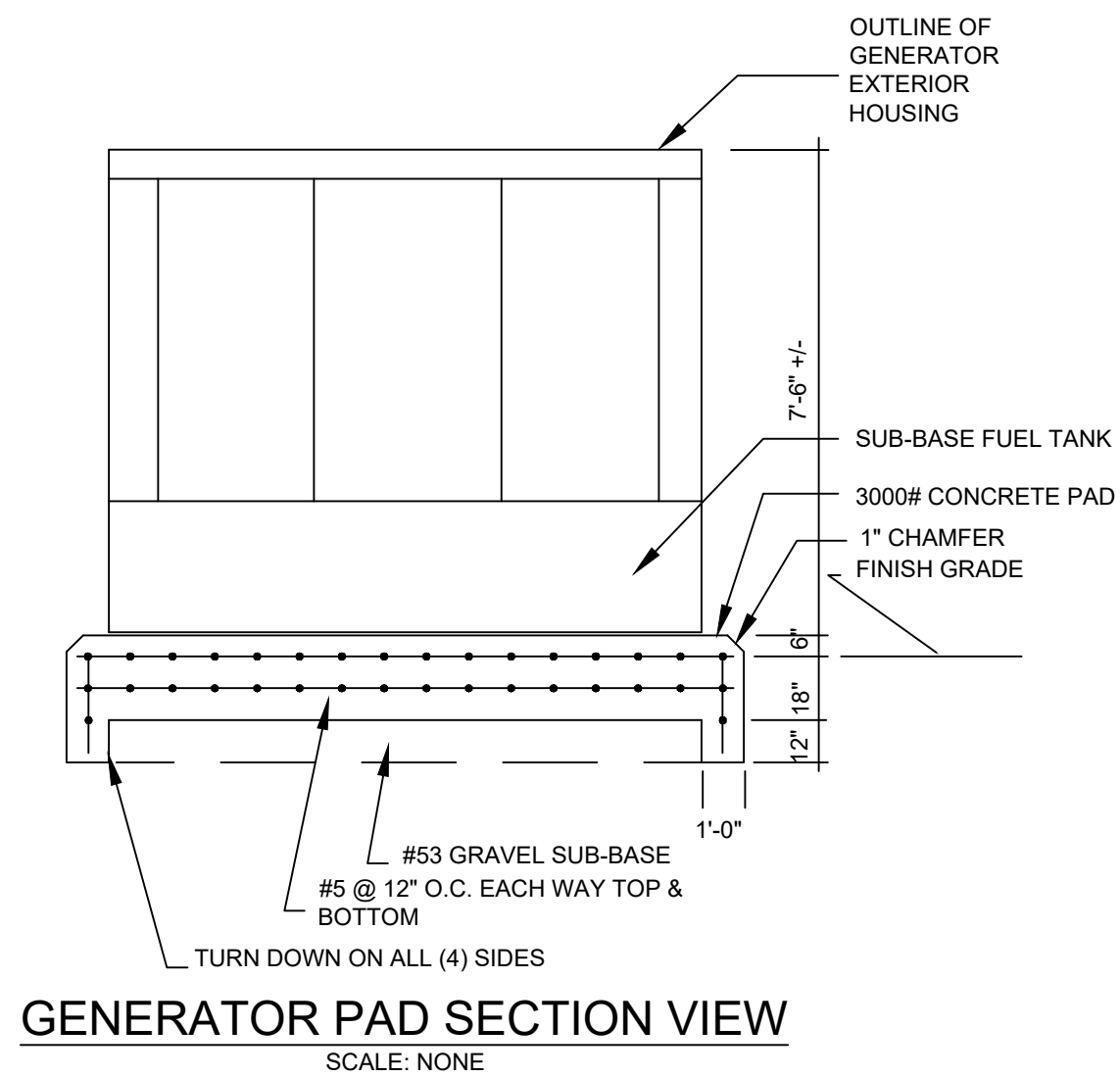
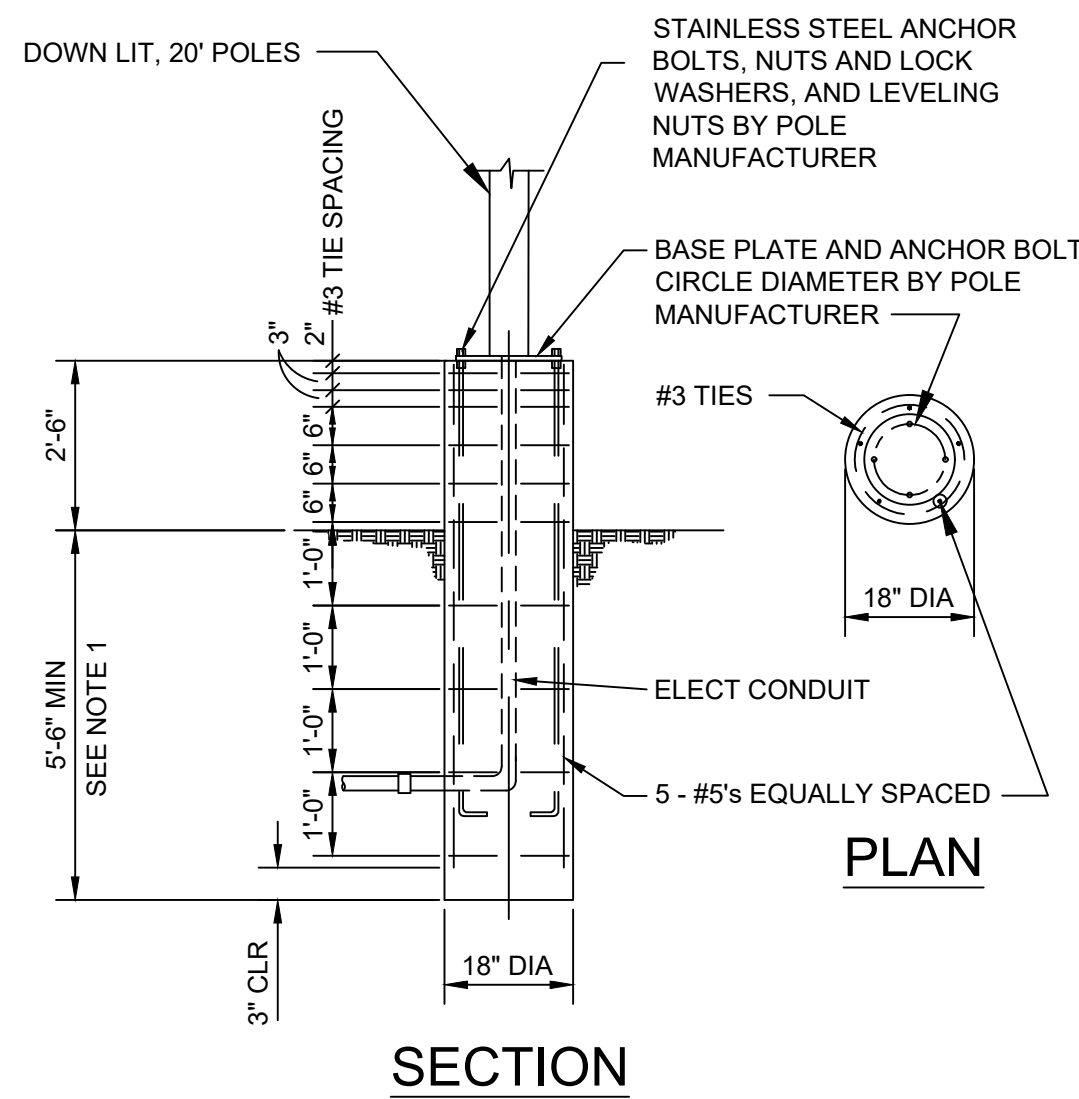
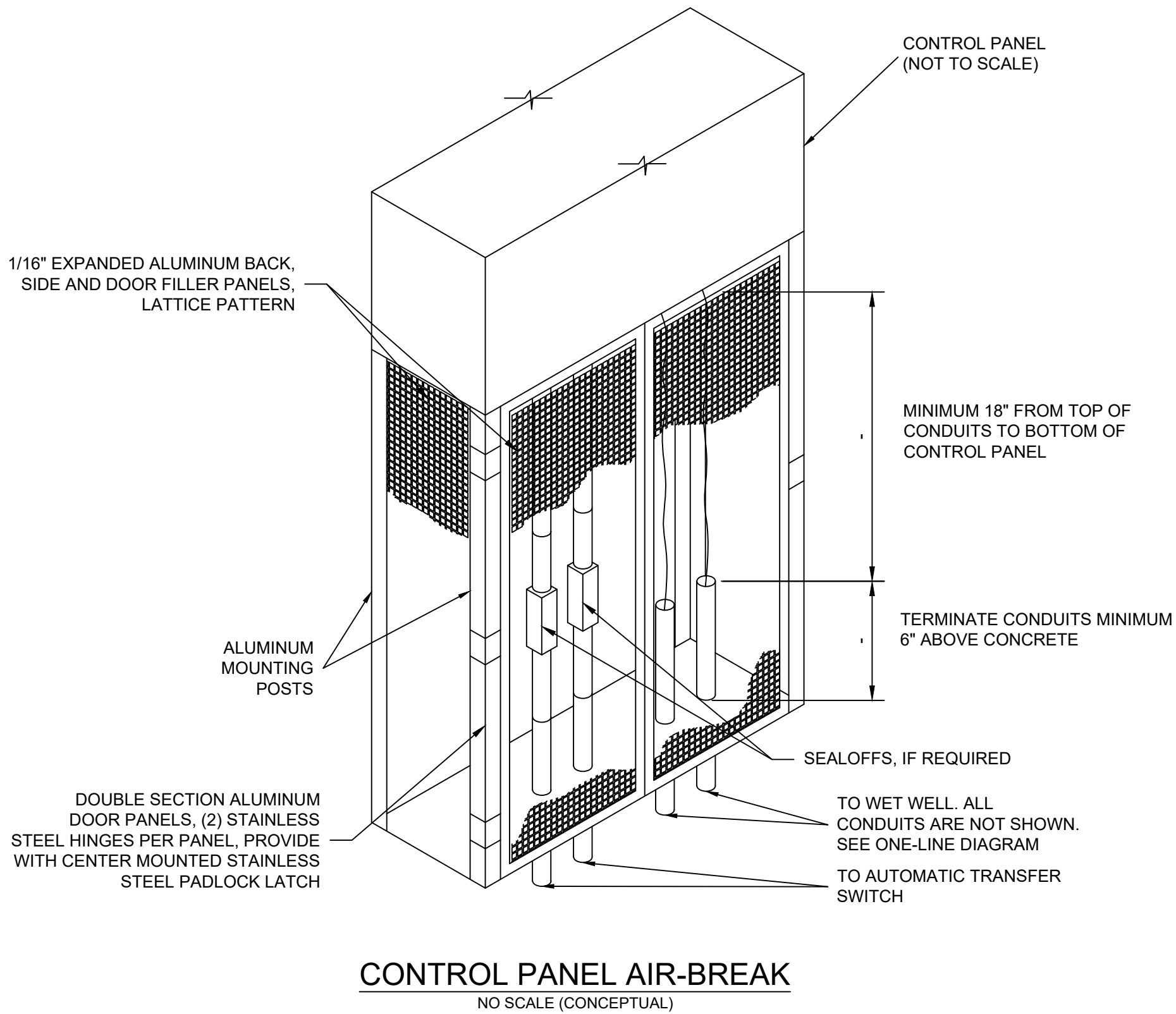
RAB	RAB BCK-S4
RAB	RAB ALED4T105/D10/WS2
RAB	RAB BOLTA/11
RAB	RAB WSREM
RAB	W34-35L
Square D	
Current Tech.	GG40-120/240-2G-5
	20A, GFCI, duplex with corrosion resistant "in-use" type cover
	20A, GFCI, duplex with corrosion resistant "in-use" type cover
	20A, GFCI, duplex with corrosion resistant "in-use" type cover
	20A Roller Arm Switch IP68

WW Williams 100A

C:\Users\Kallio\SAMCO, Inc.\Operations and Engineering - General\Engineering\HSE Details\And Specs\Lift Station\Lift Station Electrical.dwg, December 19, 2022 3:30 PM, THJ\KAS KALLO, © Paul I. Cripe, Inc.



PANEL SCHEDULE		DESIGNATION:	PANEL "LP-1"				MAINS:	25 AMP MAIN CIRCUIT BREAKER					
		LOCATION:	EXTERIOR LIGHTING PANEL				BUS SIZE:	100 AMP					
		VOLTAGE:	120/240V				PANEL MOUNTING:	SURFACE					
		PHASE:	1 PHASE, 3 WIRE				ALL BREAKERS:	14,000 A.I.C. (MINIMUM)					
O.K.T. NO.	LOAD DESCRIPTION	#	KVA	O.K.T. BKR.		KVA		O.K.T. BKR.		KVA	#	LOAD DESCRIPTION	O.K.T. NO.
				AMPS	POLE	A	B	AMPS	POLE				
1	SITE POLE LIGHT		1.00	20	1	0.00		20	1	0.50		GENERATOR - BATTERY CHARGER	2
3	VALVE VAULT LIGHTS		1.00	20	1		0.00	20	1	1.00		GENERATOR - STRIP HEATER	4
5	SITE GFI RECEPTACLE		0.18	20	1	0.00		20	1	0.18		VALVE VAULT GFI RECEPTACLE	6
7	SUMP EFFLUENT PUMP RECEPTACLE		0.18	20	1		0.00	20	1	0.55		ODOR CONTROL UNIT	8
9	SPARE			20	1	0.00		20	1			SPARE	10
11	SPARE			30	2		0.00	20	2	1.50		GENERATOR - BLOCK HEATER	12
13	SPARE					0.00							14
15	SPARE			40	2		0.00	30	2			SPD	16
17						0.00							18
TOTAL CONNECTED LOAD:						0.00	0.00	TOTAL =		6.09	KVA		
#	ONE (1) OR TWO (2) DIGIT NUMBERS REFER TO CONDUIT & WIRE SCHEDULE ON THIS SHEET. NEMA 4x, STAINLESS STEEL ENCLOSURE												



DRAWINGS CONTAINED HEREIN ARE FOR CONCEPTUAL PURPOSES ONLY TO DEMONSTRATE THE REQUIRED COMPONENTS TO BE INCLUDED WITHIN THE SUBMITTED DESIGN PLAN FOR APPROVAL. DESIGN ENGINEER TO PROVIDE SCALED DRAWINGS LAYOUT BASED ON ACTUAL INFLUENT/EFFLUENT ORIENTATION AND SIZE BASED UPON INTENDED SERVICE AREA.