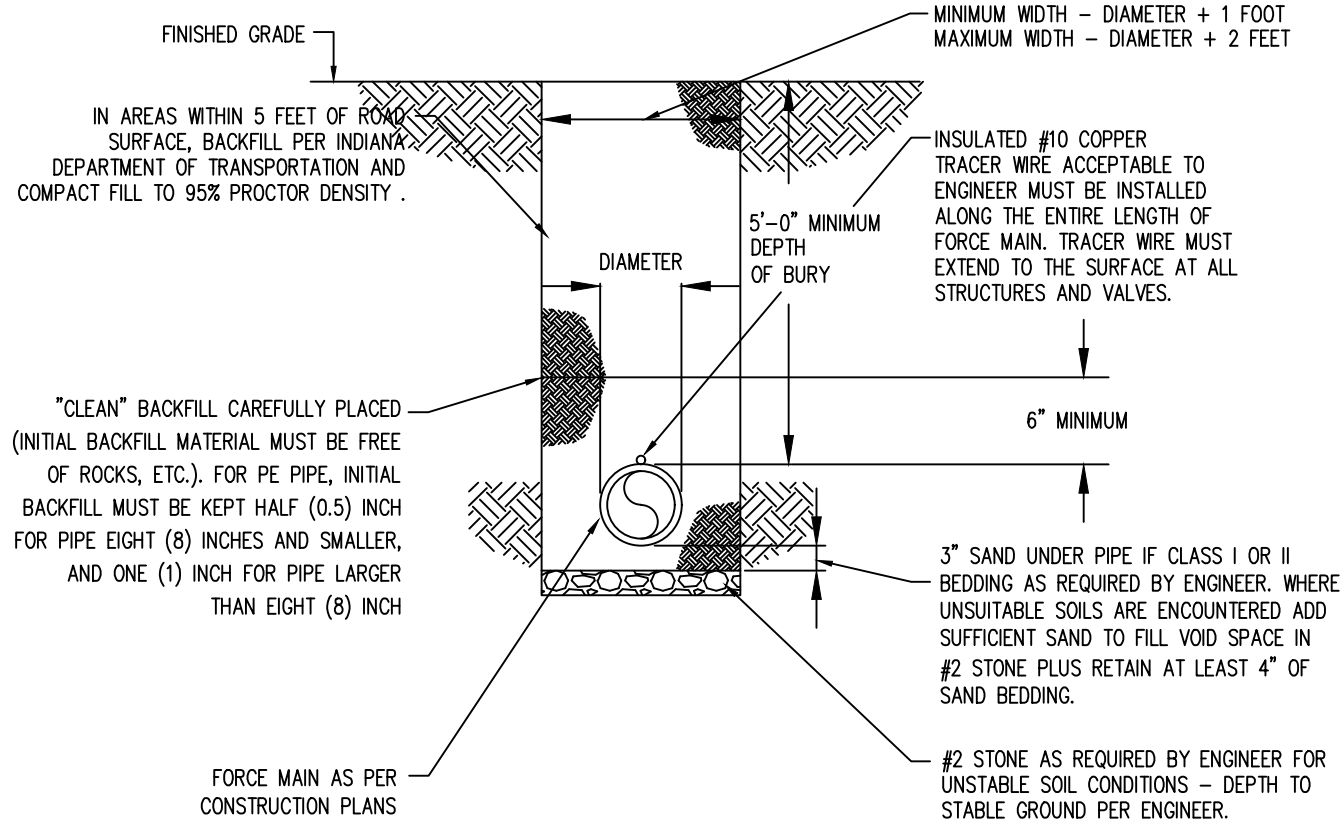


	TEE		22 1/2°		45°		90°		PLUG	
SIZE	W	D	W	D	W	D	W	D	W	D
3", 4"	2'-6"	1'-0"	1'-0"	0'-9"	1'-6"	1'-3"	2'-9"	1'-3"	1'-6"	1'-6"
6"	3'-3"	1'-6"	2'-0"	1'-0"	2'-6"	1'-6"	4'-3"	1'-6"	2'-3"	2'-3"
8"	4'-3"	2'-0"	2'-0"	1'-9"	3'-9"	1'-9"	6'-0"	2'-0"	3'-0"	3'-0"
10"	5'-3"	2'-6"	3'-0"	1'-9"	4'-0"	2'-6"	7'-3"	2'-6"	3'-9"	3'-9"
12"	6'-0"	3'-0"	3'-6"	2'-0"	4'-9"	3'-6"	7'-9"	3'-0"	4'-3"	4'-3"

- NOTES:
- CONCRETE REACTION BLOCKING SHALL NOT COVER PIPE JOINTS, BOLTS, OR GLANDS.
 - CONCRETE SHALL HAVE A COMPRESSIVE STRENGTH NOT LESS THAN 2000 PSI AFTER 28 DAYS. UNOPENED BAGS OF SACKRETE ARE NOT ACCEPTABLE.
 - WRAP DI FITTINGS WITH 8 MIL VISQUEEN OR POLYETHYLENE ENCASEMENT.

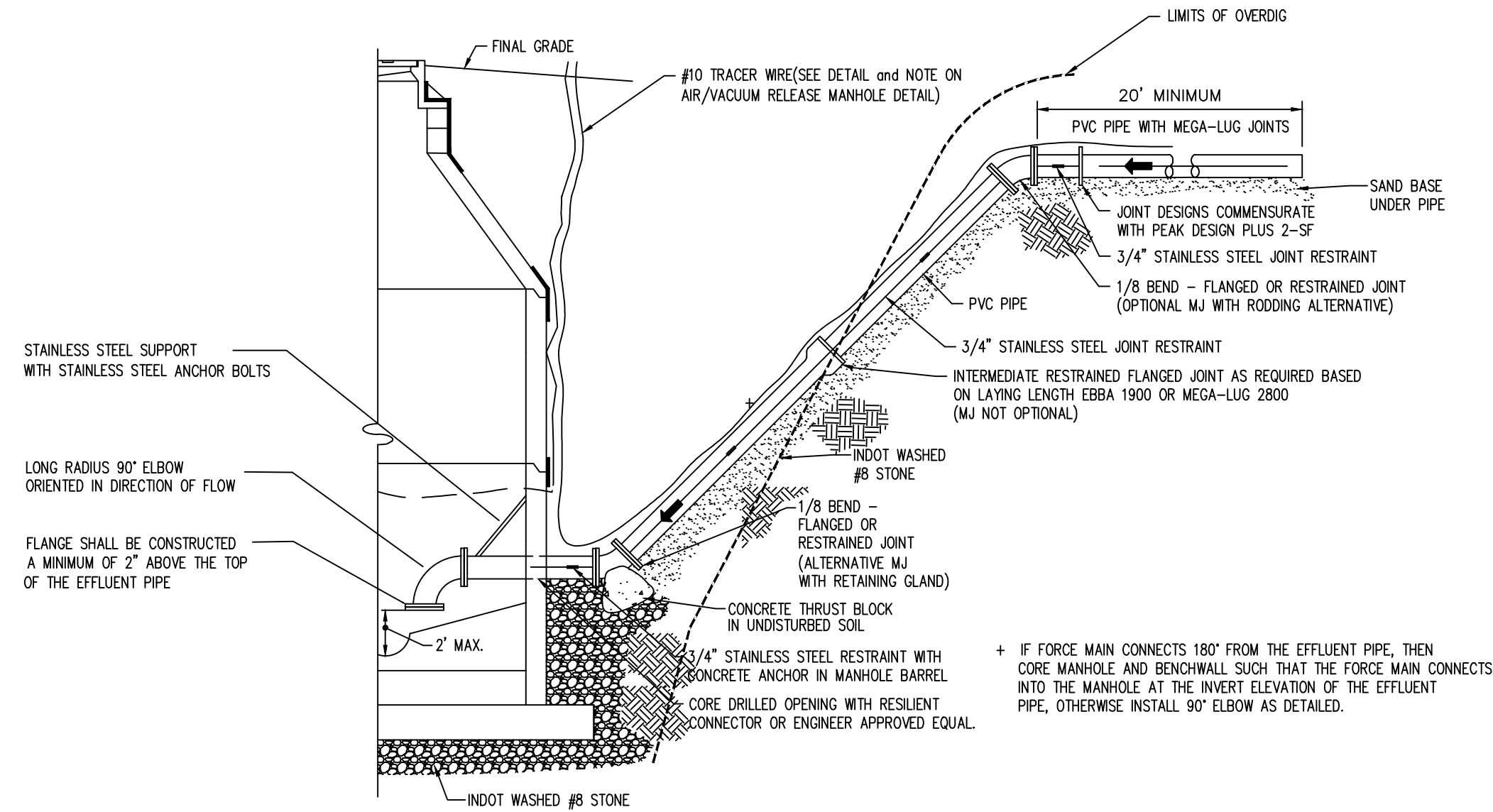
FORCE MAIN THRUST BLOCKING

NO SCALE



FORCE MAIN TRENCH DETAIL

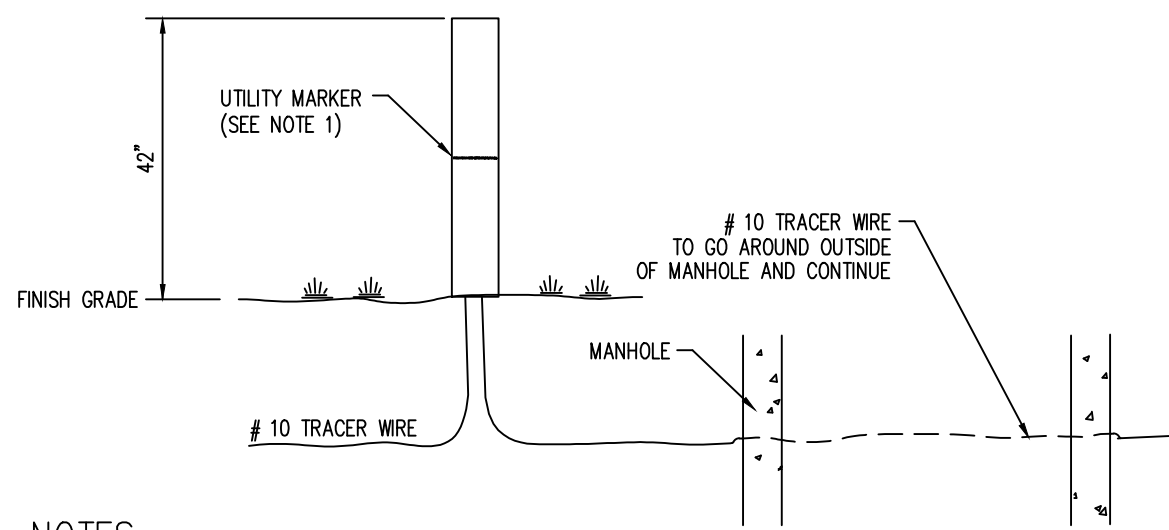
NO SCALE



FORCE MAIN DISCHARGE AT MANHOLE DETAIL

NO SCALE

- NOTES:
- PIPE DIAMETER SHALL BE AS NOTED ON PLANS.
 - INTERMEDIATE RESTRAINED OR FLANGED JOINT FITTINGS MAY BE USED BETWEEN BASE 1/8 BEND AND MANHOLE BARREL (RESTRAINT REQUIRED BETWEEN LAST FITTING AND MANHOLE BARREL).

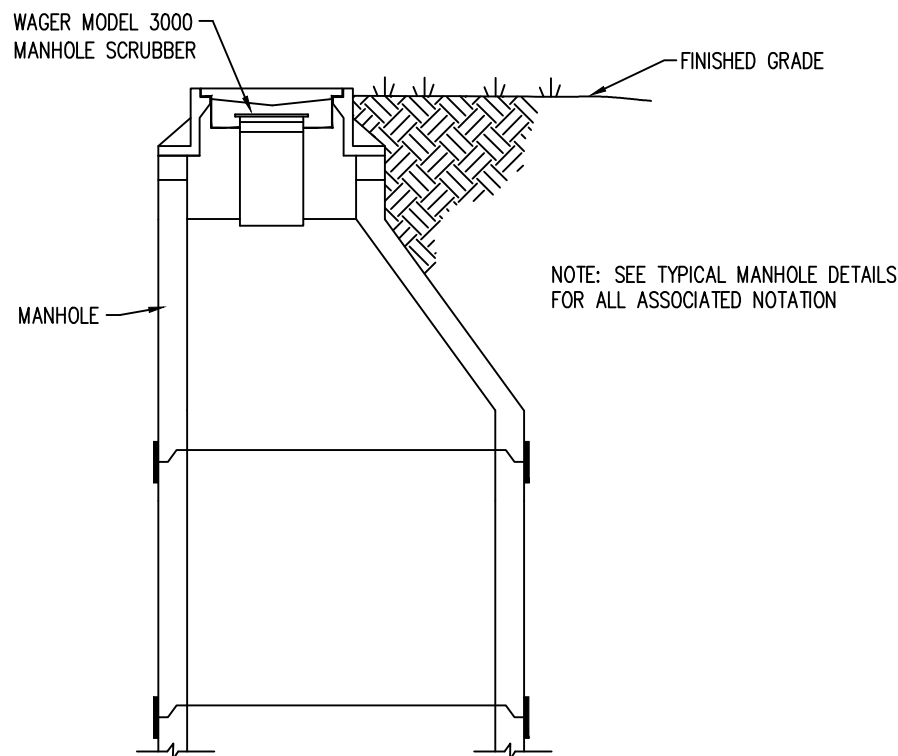


NOTES:

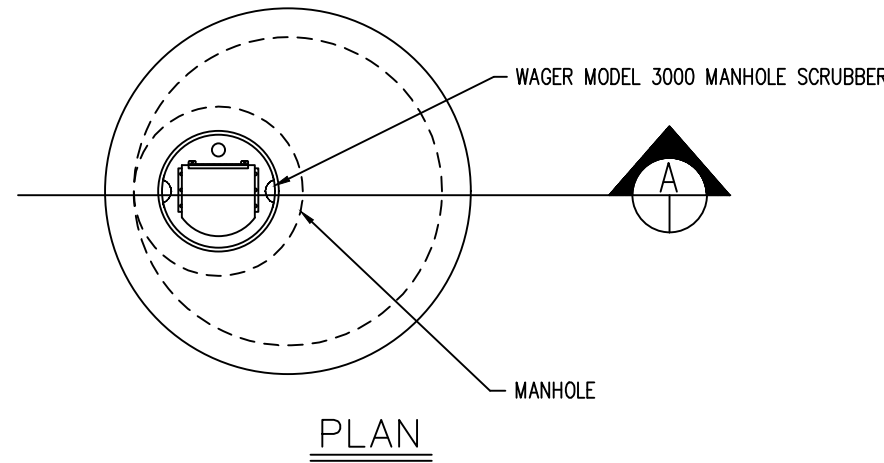
- #10 TRACER WIRE TO BE SUPPORTED IN A TAPCO (TRAFFIC AND PARKING CONTROL CO., INC.) ROUND DOME SANITARY SEWER UTILITY MARKER INDICATING PRESSURE OR GRAVITY INSTALLATION. WHITE POLE 78" H, 54" ABOVE GROUND, GREEN TOP UTILITY MARKER TO BE LOCATED OUTSIDE THE MANHOLE (SEE DETAIL). UTILITY MARKER TO BE LOCATED WHERE A FORCE MAIN CROSSES A STREET, ALL LIFT STATION / FORCE MAIN MANHOLES, VALVES AND FITTINGS, AND AT DISTANCES NOT TO EXCEED 1,200 FEET ALONG STRAIGHT RUNS.
- TEST CONNECTIONS ARE PREFERRED TO BE LOCATED ON OUTSIDE OF POST.

TRACER WIRE DETAIL

NO SCALE



SECTION A



PLAN

NOTES:

- TO BE USED FOR FORCE MAINS WITH A DISCHARGE PIPE OF 4" OR SMALLER
- WAGER MODEL 3000 MANHOLE SCRUBBER WITH SOLBLS MIDAS ODOR CONTROL MEDIA IS REQUIRED TO BE INSTALLED.

ODOR CONTROL AT FORCE MAIN DISCHARGE

NO SCALE

HSE'S LIFT STATION PLAN, LIFT STATION AND FORCE MAIN DETAILS AND LIFT STATION AND FORCE MAIN SPECIFICATIONS ARE COMPLEMENTARY IN NATURE AND SHOULD NOT BE INTERPRETED INDIVIDUALLY WITHOUT REFERENCE TO THE OTHER SHEETS.

REVISED 12/14/2022

NOTE: CONTRACTOR SHALL CONTACT THE UTILITIES ENGINEER PRIOR TO PURCHASING ANY EQUIPMENT FOR THIS LIFT STATION OR FORCE MAIN TO VERIFY PROPER INTERPRETATION OF SPECIFICATIONS AND PLANS.

THESE DRAWINGS AND THE IDEAS, DESIGNS AND CONCEPTS CONTAINED HEREIN ARE THE EXCLUSIVE INTELLECTUAL PROPERTY OF SANITARY MANAGEMENT & ENGINEERING COMPANY, INC. AND ARE NOT TO BE USED OR REPRODUCED IN WHOLE OR IN PART, WITHOUT THE WRITTEN CONSENT OF SANITARY MANAGEMENT & ENGINEERING COMPANY, INC.

REVISIONS

DRAWN

CERTIFIED

SAMCO
Sanitary Management &
Engineering Company, Inc.
11905 Lakeside Drive
P.O. Box 6038
317-577-1150 Fax 317-577-3642

JOB NO.

PROJECT

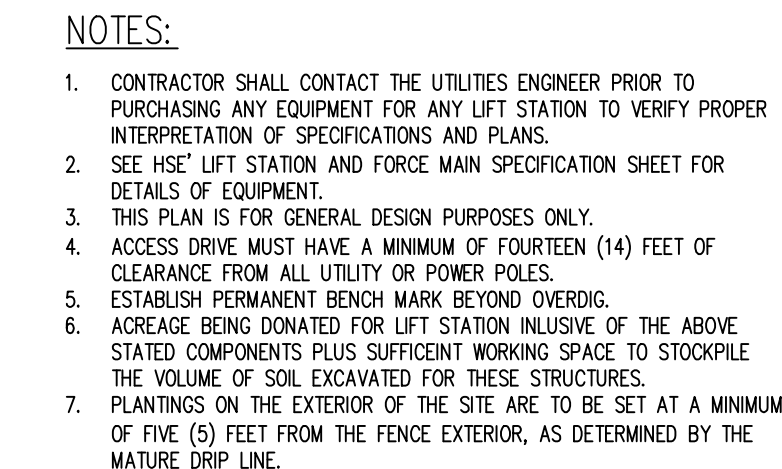
PREPARED FOR

SCALE:

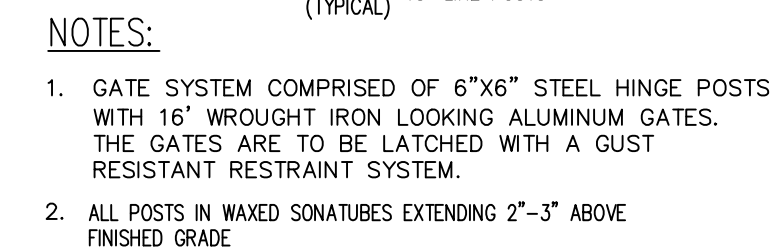
TITLE
LIFT STATION and FORCE MAIN DETAILS

SHEET

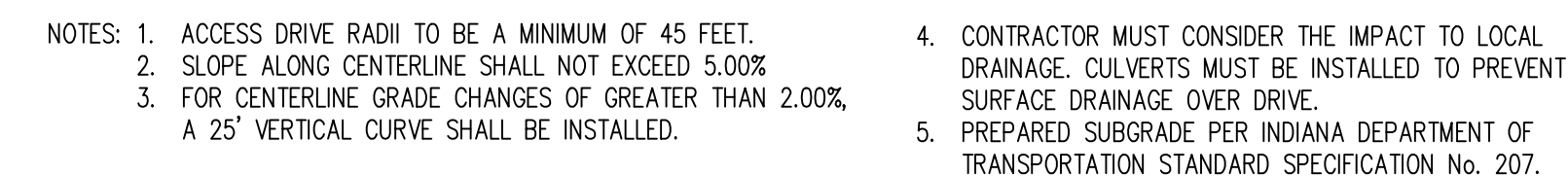
SHEET 2 OF 4



NO SCALE



NO SCALE



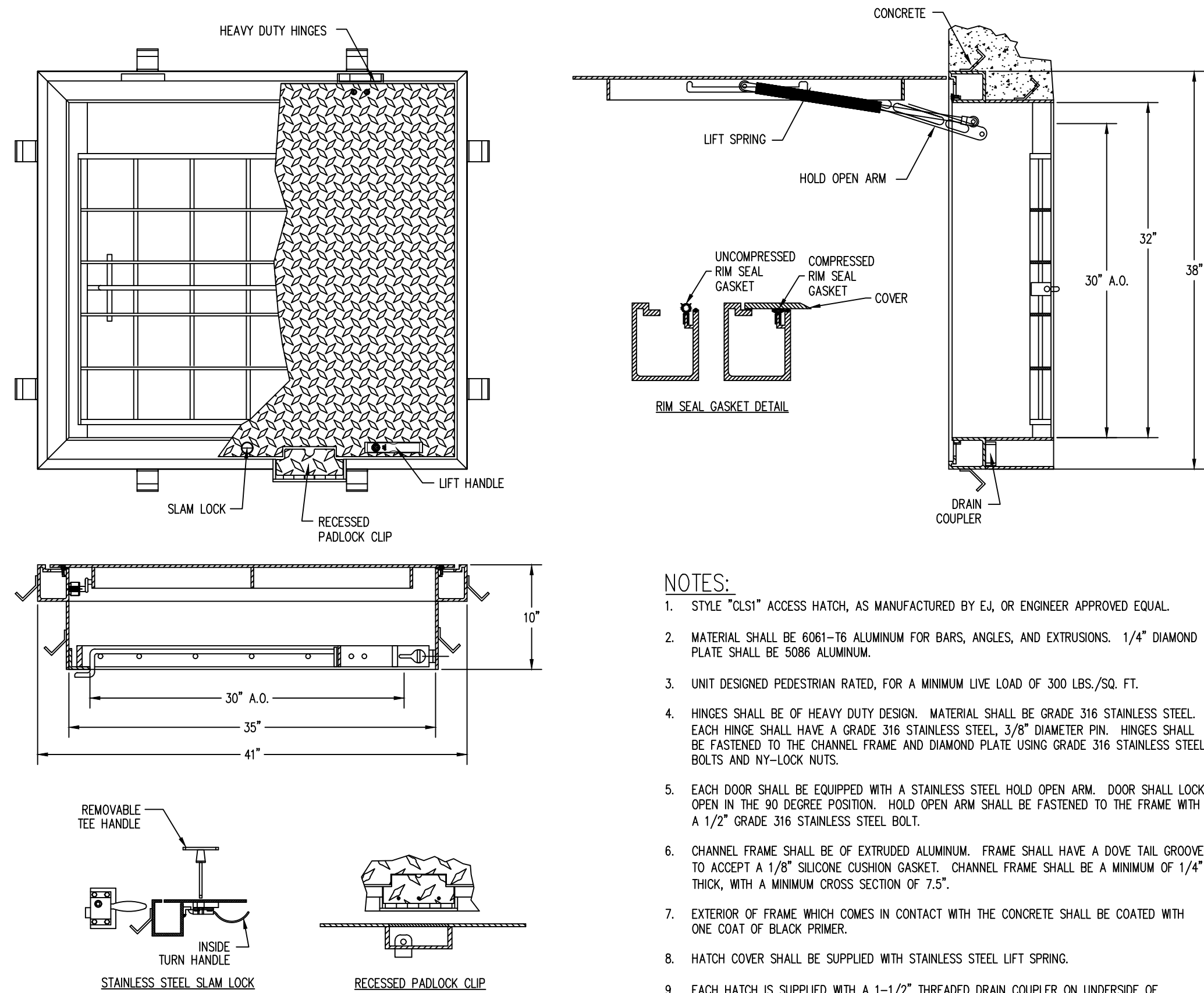
NO SCALE

CERTIFIED _____

PROJECT	JOB NO.
PREPARED FOR	
TITLE	
TYPICAL LIFT STATION AND FORCE MAIN DETAILS	
SCALE: N/A	

SHEET 3 of 4

THESE DRAWINGS AND THE IDEAS, DESIGNS AND CONCEPTS CONTAINED
HEREIN ARE THE EXCLUSIVE INTELLECTUAL PROPERTY OF SANITARY
MANAGEMENT & ENGINEERING COMPANY, INC. AND ARE NOT TO BE
USED OR REPRODUCED IN WHOLE OR IN PART, WITHOUT THE WRITTEN
CONSENT OF SANITARY MANAGEMENT & ENGINEERING COMPANY, INC.
©2022 BY SANITARY MANAGEMENT & ENGINEERING COMPANY, INC.

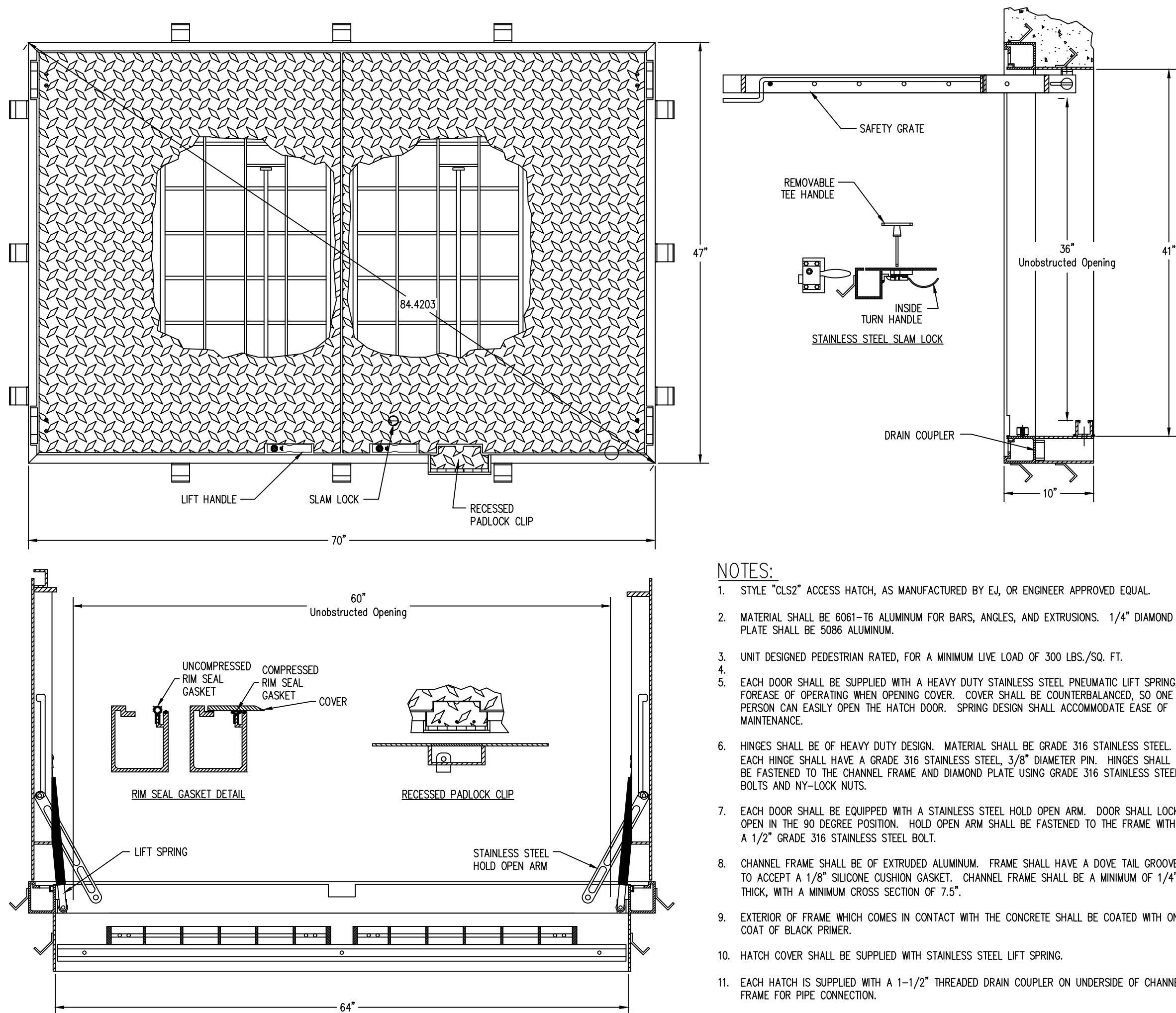


NOTES:

1. STYLE "CLS2" ACCESS HATCH, AS MANUFACTURED BY E4, OR ENGINEER APPROVED EQUAL.
2. MATERIAL SHALL BE 6061-T6 ALUMINUM FOR BARS, ANGLES, AND EXTRUSIONS. 1/4" DIAMOND PLATE SHALL BE 5086 ALUMINUM.
3. UNIT DESIGNED PEDESTRIAN RATED, FOR A MINIMUM LIVE LOAD OF 300 LBS./SQ. FT.
4. HINGES SHALL BE OF HEAVY DUTY DESIGN. MATERIAL SHALL BE GRADE 316 STAINLESS STEEL. EACH HINGE SHALL HAVE A GRADE 316 STAINLESS STEEL, 3/8" DIAMETER PIN. HINGES SHALL BE FASTENED TO THE CHANNEL FRAME AND DIAMOND PLATE USING GRADE 316 STAINLESS STEEL BOLTS AND NY-LOCK NUTS.
5. EACH DOOR SHALL BE EQUIPPED WITH A STAINLESS STEEL HOLD OPEN ARM. DOOR SHALL LOCK OPEN IN THE 90 DEGREE POSITION. HOLD OPEN ARM SHALL BE FASTENED TO THE FRAME WITH A 1/2" GRADE 316 STAINLESS STEEL BOLT.
6. CHANNEL FRAME SHALL BE OF EXTRUDED ALUMINUM. FRAME SHALL HAVE A DOVE TAIL GROOVE TO ACCEPT A 1/8" SILICONE CUSHION GASKET. CHANNEL FRAME SHALL BE A MINIMUM OF 1/4" THICK, WITH A MINIMUM CROSS SECTION OF 7.5".
7. EXTERIOR OF FRAME WHICH COMES IN CONTACT WITH THE CONCRETE SHALL BE COATED WITH ONE COAT OF BLACK PRIMER.
8. HATCH COVER SHALL BE SUPPLIED WITH STAINLESS STEEL LIFT SPRING.
9. EACH HATCH IS SUPPLIED WITH A 1-1/2" THREADED DRAIN COUPLER ON UNDERSIDE OF CHANNEL FRAME FOR PIPE CONNECTION.
10. ALL HARDWARE SHALL BE STAINLESS STEEL.
11. EACH HATCH SHALL BE SUPPLIED WITH A GRADE 316 STAINLESS STEEL SLAM LOCK, WITH KEY WAY PROJECTED BY A THREADED PLUG. PLUG SHALL BE FLUSH WITH THE TOP OF THE 1/4" DIAMOND PLATE. SLAM LOCK SHALL BE FASTENED WITH FOUR GRADE 316 STAINLESS STEEL BOLTS AND WASHERS.
12. EACH HATCH SHALL BE EQUIPPED WITH AN ALUMINUM LIFT HANDLE. THE LIFT HANDLE SHALL BE FLUSH WITH THE TOP OF THE 1/4" DIAMOND PLATE.
13. UNITS SHALL BE SUPPLIED WITH ORANGE POWDER COATED HINGED SAFETY GRATES TO PROVIDE PROTECTION AGAINST FALL THROUGH AND TO CONTROL ACCESS TO THE CONFINED SPACE.
14. EACH UNIT SHALL BE SUPPLIED WITH RIMSEAL GASKET.
15. EACH HATCH SHALL BE SUPPLIED WITH A RECESSED PADLOCK CLIP (PADLOCK SUPPLIED BY OTHERS).

PEDESTRIAN RATED ALUMINUM SAFE HATCH®

NO SCALE



NOTES:

1. STYLE "CLS2" ACCESS HATCH, AS MANUFACTURED BY E4, OR ENGINEER APPROVED EQUAL.
2. MATERIAL SHALL BE 6061-T6 ALUMINUM FOR BARS, ANGLES, AND EXTRUSIONS. 1/4" DIAMOND PLATE SHALL BE 5086 ALUMINUM.
3. UNIT DESIGNED PEDESTRIAN RATED, FOR A MINIMUM LIVE LOAD OF 300 LBS./SQ. FT.
4. EACH DOOR SHALL BE SUPPLIED WITH A HEAVY DUTY STAINLESS STEEL PNEUMATIC LIFT SPRING, FOREASE OF OPERATING WHEN OPENING COVER. COVER SHALL BE COUNTERBALANCED, SO ONE PERSON CAN EASILY OPEN THE HATCH DOOR. SPRING DESIGN SHALL ACCOMMODATE EASE OF MAINTENANCE.
5. HINGES SHALL BE OF HEAVY DUTY DESIGN. MATERIAL SHALL BE GRADE 316 STAINLESS STEEL. EACH HINGE SHALL HAVE A GRADE 316 STAINLESS STEEL, 3/8" DIAMETER PIN. HINGES SHALL BE FASTENED TO THE CHANNEL FRAME AND DIAMOND PLATE USING GRADE 316 STAINLESS STEEL BOLTS AND NY-LOCK NUTS.
6. EACH DOOR SHALL BE EQUIPPED WITH A STAINLESS STEEL HOLD OPEN ARM. DOOR SHALL LOCK OPEN IN THE 90 DEGREE POSITION. HOLD OPEN ARM SHALL BE FASTENED TO THE FRAME WITH A 1/2" GRADE 316 STAINLESS STEEL BOLT.
7. CHANNEL FRAME SHALL BE OF EXTRUDED ALUMINUM. FRAME SHALL HAVE A DOVE TAIL GROOVE TO ACCEPT A 1/8" SILICONE CUSHION GASKET. CHANNEL FRAME SHALL BE A MINIMUM OF 1/4" THICK, WITH A MINIMUM CROSS SECTION OF 7.5".
8. EXTERIOR OF FRAME WHICH COMES IN CONTACT WITH THE CONCRETE SHALL BE COATED WITH ONE COAT OF BLACK PRIMER.
9. HATCH COVER SHALL BE SUPPLIED WITH STAINLESS STEEL LIFT SPRING.
10. EACH HATCH IS SUPPLIED WITH A 1-1/2" THREADED DRAIN COUPLER ON UNDERSIDE OF CHANNEL FRAME FOR PIPE CONNECTION.
11. EACH HATCH SHALL BE SUPPLIED WITH A GRADE 316 STAINLESS STEEL SLAM LOCK, WITH KEY WAY PROJECTED BY A THREADED PLUG. PLUG SHALL BE FLUSH WITH THE TOP OF THE 1/4" DIAMOND PLATE. SLAM LOCK SHALL BE FASTENED WITH FOUR GRADE 316 STAINLESS STEEL BOLTS AND WASHERS.
12. EACH HATCH SHALL BE EQUIPPED WITH AN ALUMINUM LIFT HANDLE. THE LIFT HANDLE SHALL BE FLUSH WITH THE TOP OF THE 1/4" DIAMOND PLATE.
13. UNITS SHALL BE SUPPLIED WITH ORANGE POWDER COATED HINGED SAFETY GRATES TO PROVIDE PROTECTION AGAINST FALL THROUGH AND TO CONTROL ACCESS TO THE CONFINED SPACE.
14. EACH UNIT SHALL BE SUPPLIED WITH RIMSEAL GASKET.
15. EACH HATCH SHALL BE SUPPLIED WITH A RECESSED PADLOCK CLIP (PADLOCK SUPPLIED BY OTHERS).

PEDESTRIAN RATED ALUMINUM SAFE HATCH®

NO SCALE

DISCLAIMER

HSE'S LIFT STATION PLAN, LIFT STATION AND FORCE MAIN DETAILS AND LIFT STATION AND FORCE MAIN SPECIFICATIONS ARE COMPLEMENTARY IN NATURE AND SHOULD NOT BE INTERPRETED INDIVIDUALLY WITHOUT REFERENCE TO THE OTHER SHEETS.

REVISED 12-16-2022

THESE DRAWINGS AND THE IDEAS, DESIGNS AND CONCEPTS CONTAINED HEREIN ARE THE EXCLUSIVE INTELLECTUAL PROPERTY OF SANITARY MANAGEMENT & ENGINEERING COMPANY, INC. AND ARE NOT TO BE USED OR REPRODUCED IN WHOLE OR IN PART, WITHOUT THE WRITTEN CONSENT OF SANITARY MANAGEMENT & ENGINEERING COMPANY, INC. ©2022 BY SANITARY MANAGEMENT & ENGINEERING COMPANY, INC.

REVISIONS

DRAWN

BY DATE CHECK NO. BY DATE CHECK

CERTIFIED

SAMCO
Sanitary Management & Engineering Company, Inc.
11905 Lakeside Drive
Houston, TX 77033
317-577-1150 Fax 317-577-3642

JOB NO.

PREPARED FOR

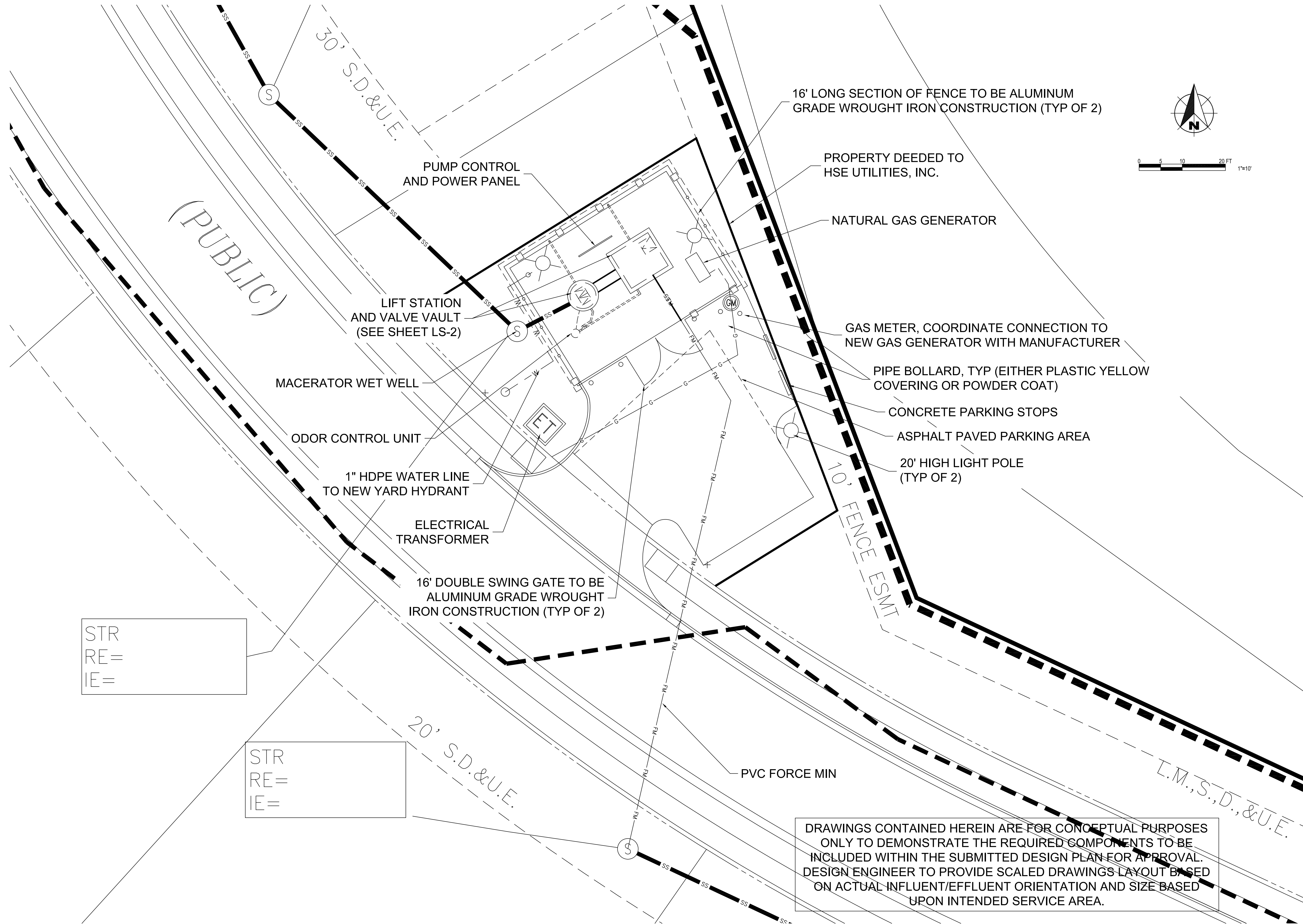
SCALE: N/A

TITLE
TYPICAL LIFT STATION AND FORCE MAIN DETAILS

SHEET

SHEET 4 of 4

C:\Users\Kallio\Public\Operations and Engineering - General\Engineering\HSE\Details\Combined LS-12-16-2022\CADD\229420-Lift Station_SIT.dwg, December 19, 2022 3:24 PM, THOMAS KALLIO, © Paul I. Cripe, Inc.



STR
RE=
IE=

STR
RE=
IE=

Revisions	Issue	Date	Description

HAMILTON SOUTHEASTERN UTILITIES, INC.

LIFT STATION SITE PLAN
PROJECT EXAMPLE ONLY

CERTIFIED BY:

Date



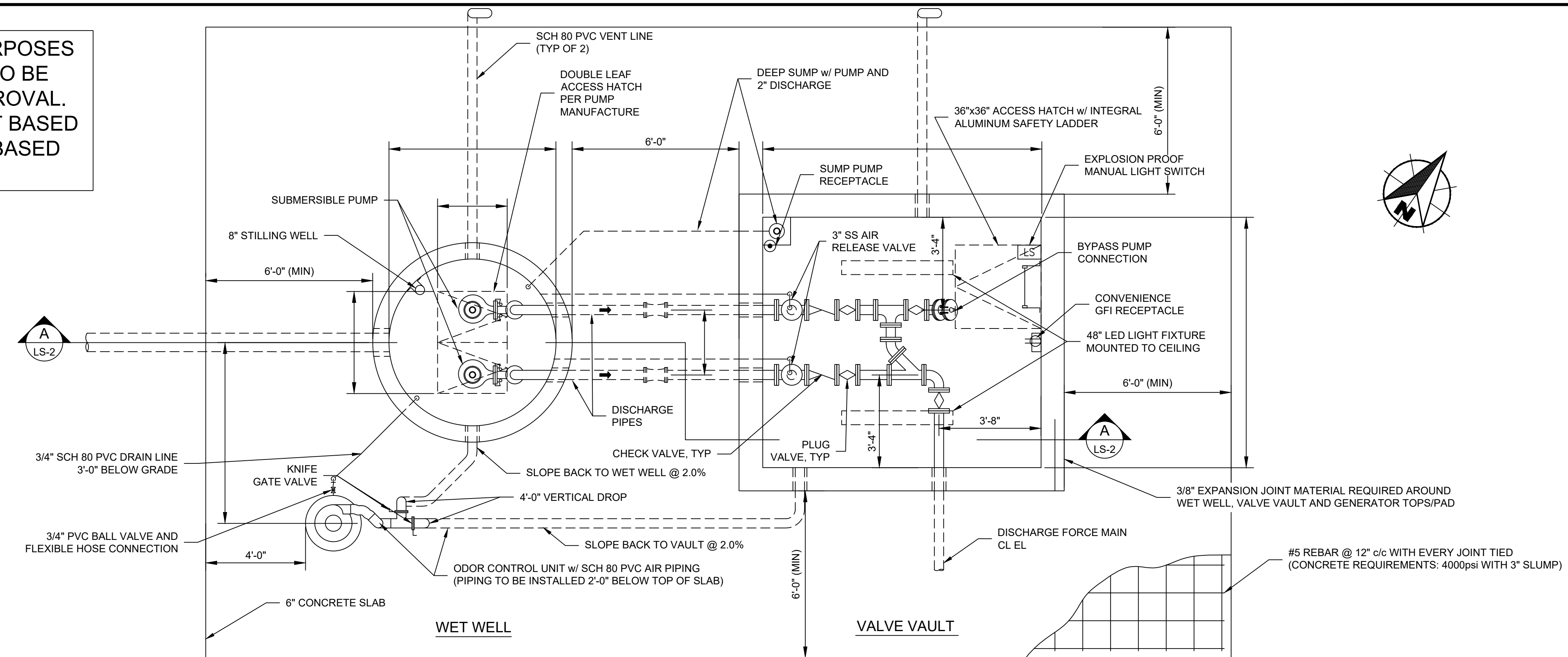
811
FOR CALLS IN INDIANA
1-800-382-5544
CALL YOUR 811
Drawn By:
MLN
Checked By:
KDJ
Quality Assurance:
RMH

Scale: 1"=10'

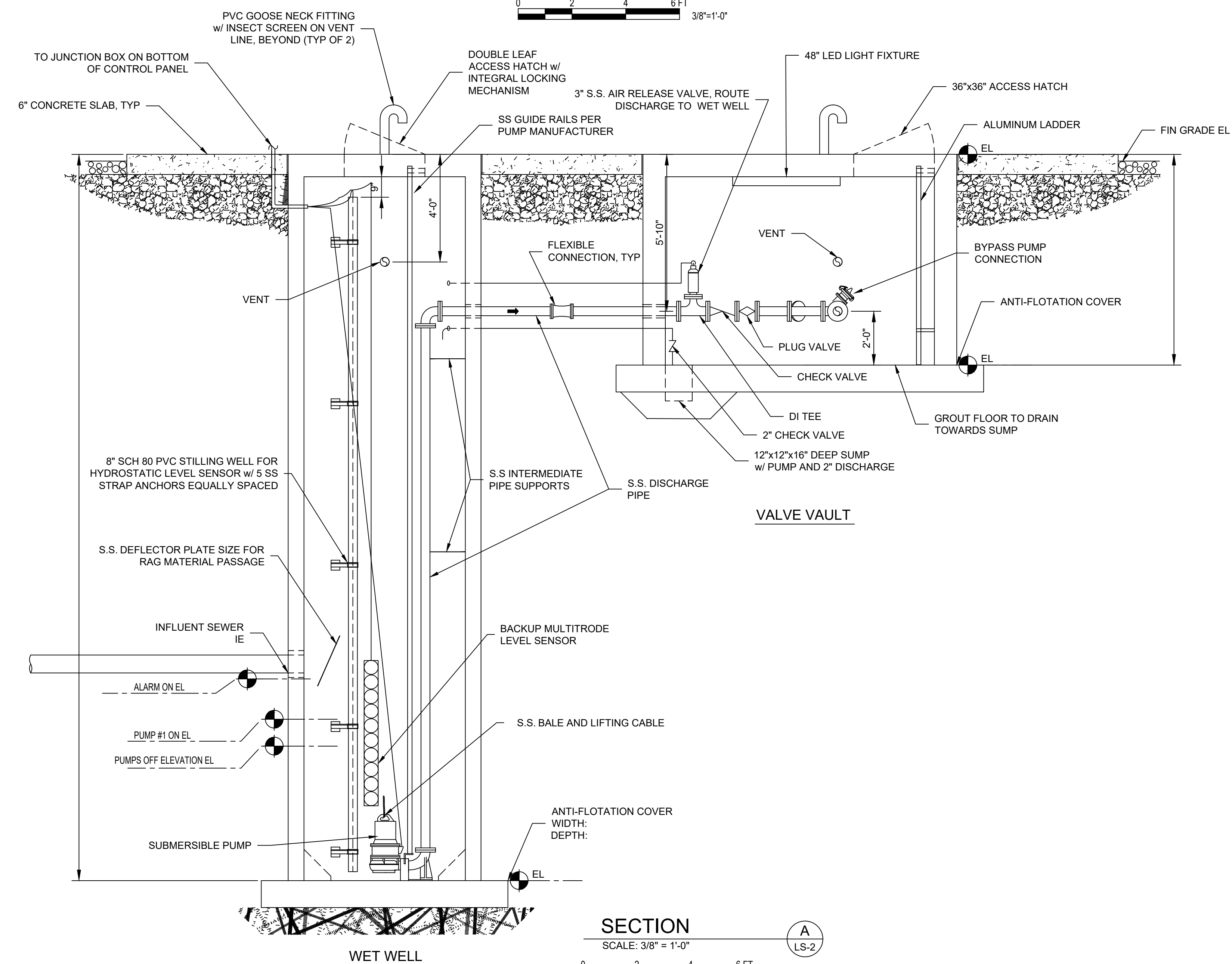
Sheet
LS-1

Date
Project Number

DRAWINGS CONTAINED HEREIN ARE FOR CONCEPTUAL PURPOSES ONLY TO DEMONSTRATE THE REQUIRED COMPONENTS TO BE INCLUDED WITHIN THE SUBMITTED DESIGN PLAN FOR APPROVAL. DESIGN ENGINEER TO PROVIDE SCALED DRAWINGS LAYOUT BASED ON ACTUAL INFLUENT/EFFLUENT ORIENTATION AND SIZE BASED UPON INTENDED SERVICE AREA.



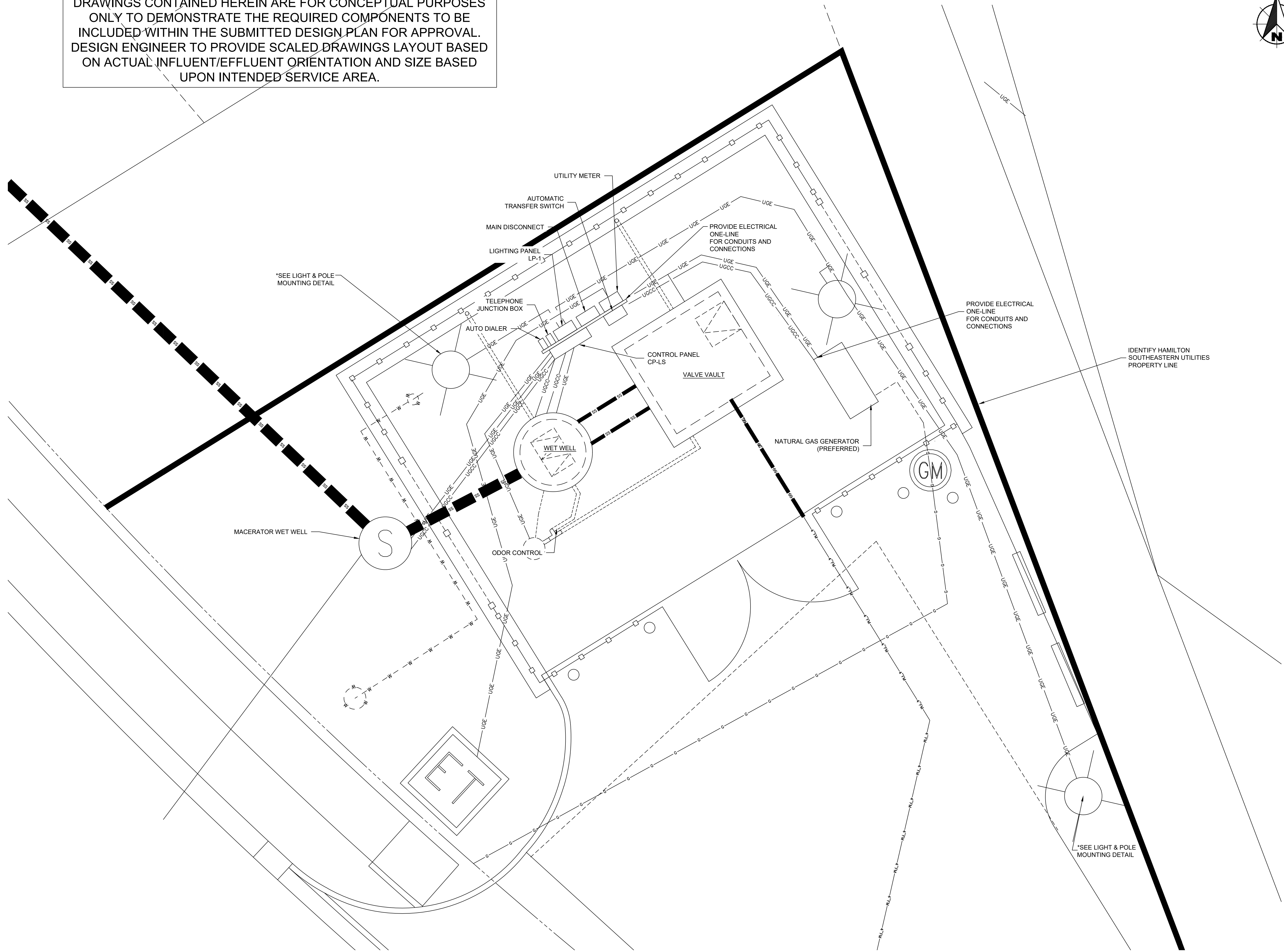
NEW LIFT STATION - PLAN



NOTES:

1. ALL EXTERIOR JOINTS ARE TO BE COVERED BY WRAPID SEAL.
2. ENTIRE EXCAVATION MUST BE BACKFILLED WITH INDOT #8 STONE.

DRAWINGS CONTAINED HEREIN ARE FOR CONCEPTUAL PURPOSES ONLY TO DEMONSTRATE THE REQUIRED COMPONENTS TO BE INCLUDED WITHIN THE SUBMITTED DESIGN PLAN FOR APPROVAL. DESIGN ENGINEER TO PROVIDE SCALED DRAWINGS LAYOUT BASED ON ACTUAL INFLUENT/EFFLUENT ORIENTATION AND SIZE BASED UPON INTENDED SERVICE AREA.



Revisions	Issue	Date	Description

HAMILTON SOUTHEASTERN UTILITIES, INC.

LIFT STATION ELECTRICAL SITE PLAN
PROJECT EXAMPLE ONLY

CERTIFIED BY:

Date



811
FOR CALLS IN INDIANA
1-800-382-5544
CALL 811 FIRST

Drawn By:
MLN

Checked By:
KCJ

Quality Assurance:
RWH

Scale: 1"=10'

Sheet
LS-3

Date

Project Number

C:\Users\Kallio\SAMCOO, Inc.\Operations and Engineering - General\Engineering\HSE Details\Combined LS-12-16-2022\CAUD\229240-Duplex Lift Station-Electrical.dwg, December 19, 2022 3:29 PM, THJ\KAS KALLIO, © Paul I. Cipe, Inc.

CONDUIT AND WIRE SCHEDULE:

- A

3"C, 4 # ?
- B

3"C, 3 # ? #N, #G
- C

3"C, 3 # ?, #G
- D

3/4"C, #G
- E

1"C, 2 # ?, #G
- F

1"C, 4 # ?
- G

1"C, 6 # ?, #G
- H

MANUFACTURER CABLE
- I

1"C, 2/C #TPS
- J

1"C, 12 # ?
- K

3"C, MANUFACTURER CABLE
- L

1"C, 2 # ?, #G AND 1"C SPARE (STUB UP AND CAP AT BOTH ENDS)
- M

1"C, 2 # ?, #G

NOTE:
DESIGN ENGINEER TO PROVIDE
WIRE SIZES TO BE USED FOR
COMPONENTS.

KEYED NOTES:

- 1

CONDUITS FOR PUMP CABLES, ROD LEVEL CABLES & SUBMERSIBLE PRESSURE TRANSMITTER. FURNISHED AND INSTALLED BY THE CONTRACTOR
- 2

LEVEL SENSOR CABLE AND STAINLESS STEEL SUPPORT CABLE. PVC STILLING TUBE MOUNTED TO THE SIDE OF THE WELL AND SUPPORTED EVERY 5' WITH 316 STAINLESS STEEL HARDWARE. POSITION STILLING TUBE SO THAT LEVEL SENSOR MAY BE PULLED UP THROUGH HATCH. SUBMERSIBLE LEVEL TRANSMITTER TO BE LOCATED BELOW THE LOWEST ROD LEVEL SEGMENT.
- 3

STAINLESS STEEL STRAIN RELIEF CABLE GRIP AND STAINLESS STEEL HOOK FOR SUPPORT OF ALL POWER AND CONTROL CABLES IN THE WET WELL, ACCESSIBLE FROM WET WELL HATCH.
- 4

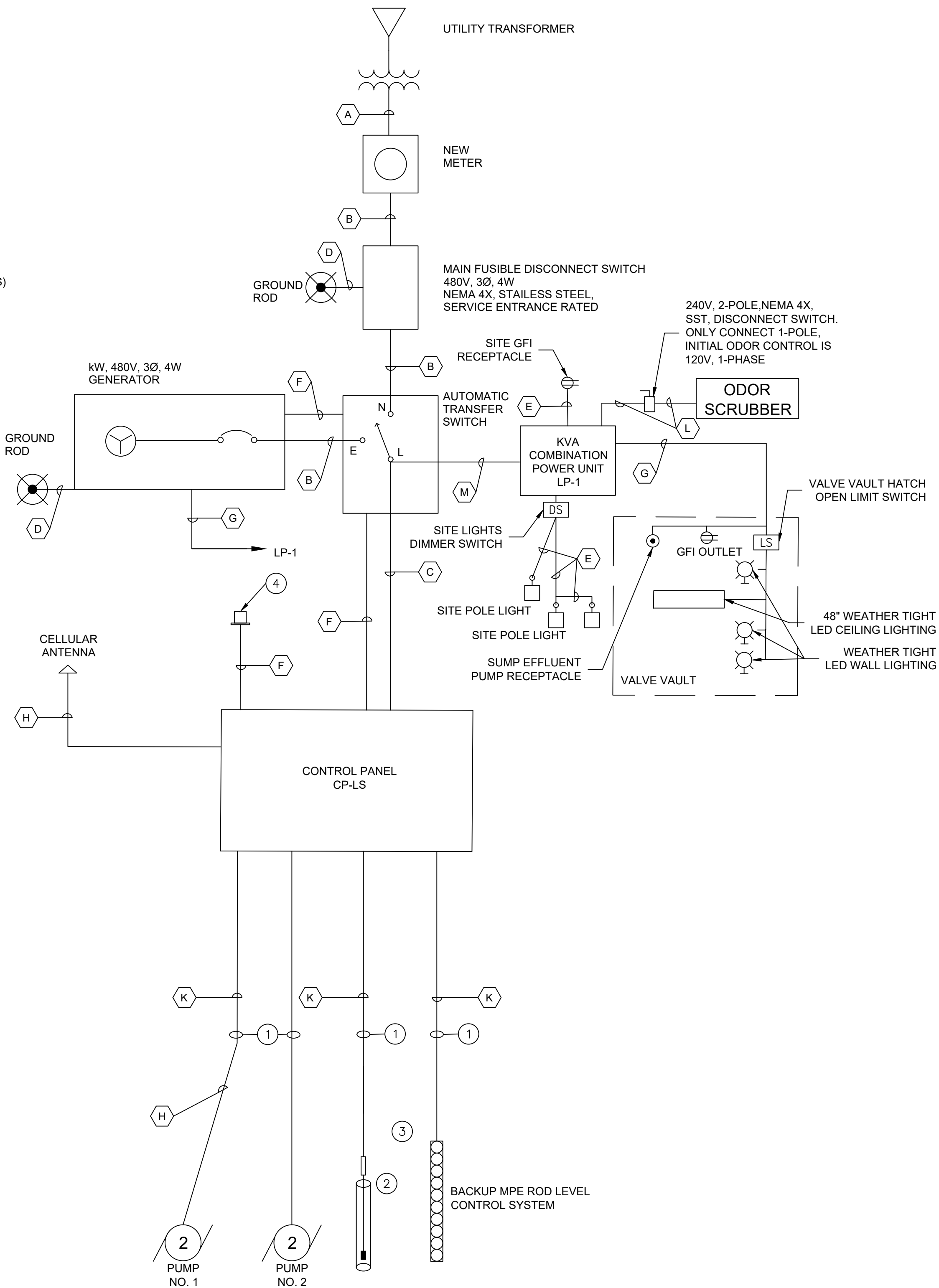
HIGH LEVEL ALARM BEACON

GENERAL NOTES:

1.

BONDED 3 POINT GROUNDING SYSTEM BEYOND THE OVER DIG, IN ALL NATURAL, UNDISTURBED SOIL. ELECTRICIAN / ELECTRICAL CONTRACTOR TO PROVE / VALIDATE GROUND ATTACHMENT.
2.

ALL PANELS TO BE NEMA 4X STAINLESS STEEL.



480V, 3PH. SERVICE, LIFT STATION
ONE-LINE DIAGRAM
SCALE: NO SCALE

DRAWINGS CONTAINED HEREIN ARE FOR CONCEPTUAL PURPOSES
ONLY TO DEMONSTRATE THE REQUIRED COMPONENTS TO BE
INCLUDED WITHIN THE SUBMITTED DESIGN PLAN FOR APPROVAL.
DESIGN ENGINEER TO PROVIDE SCALED DRAWINGS LAYOUT BASED
ON ACTUAL INFLUENT/EFFLUENT ORIENTATION AND SIZE BASED
UPON INTENDED SERVICE AREA.

Specs for a 2 pump control cabinet

Control Cabinet (Nema 4X)
Control Cabinet Back Plate
Control Cabinet Inner door Kit (Swing Out Panels)
Control Cabinet Heater
Control Cabinet Document Holder X2 (1 on each door)
Control Cabinet Cooling Fan & Filter Kit
Cooling Fan Stainless all weather covers for fan kit
Junction Boxes Cabinet (NEMA 4X)
Junction Boxes Back Plate
Junction Boxes Feed Through Wire Way

ALL BREAKERS TO BE 600v Rated

Siemens 100amp Breaker Style Disconnect 4X cabinet
100amp main breaker (or Equal)
Motor Rated Breakers (or Equal)
15amp breaker (or Equal)
Atech Control Breaker 20a 2p (or Equal)
Atech Control Breaker 20a 1p (or Equal)
Atech Control Breaker 16a 1p (or equal)
Atech Control Breaker 4a 1p (or Equal)
480v to 120v open type IP20

Din Rail Receptacles
PLC
Sola Tracking Filter
Sola Power Supplies 24vdc (2 Will be needed)
Sola Diode
Sola UPS
Sola Battery
Sierra Wireless Cell Modem
Modem Din Rail Mount
Sierra Wireless Power Supply
Cell Modem Antenna
Start Relay
Seal Relays
PLC Live Relays
Relay Base
Pilot Light (red) Seal Failure
Pilot Light (green) Pump On
30mm selector switch (HOA 3 position)
Push Button (For Reset)
Terminal Blocks
End Anchors
Din Rail 6"
Wireways w/covers 2x2 (white)
Wireways w/covers 1x2 (white)
MPE Level Probe
Level Probe Control Relay
Transducer
Transducer Surge Arrester
Transducer Bellow
Horse Power compatible VFD
LCP mounting kit
LCP Panels
MCB 101 card

Site Lighting and Electrical

Poles for Area Lighting
Pole Base Cover Kit
Pole Light Heads
Pole Anchor Kit
Pole Light Commission Tool
Valve Vault Lighting
Mini-Substation LP-1, 10KVA, 480V to 240/120V
Surge Protection Device
Site Convenience Receptacle
Valve Vault Convenience Receptacle
Valve Vault Sump Effluent Pump Receptacle
Valve Vault Lights Hatch Open Limit Switch

Generator / ATS / Docking Station

MTU Generator Natural Gas
Generator to have sound barrier Enclosure
ASCO Automatic Transfer Switch (NEMA 4X)

Parts List

Manufacture	Part Number
Hoffman	Hoff A62H4818SSLP3PT
Hoffman	Hoff A60P48
Hoffman	Match Cabinet Part number (Hoff A62H4818SSLP3PT)
Hoffman	DAH2001A 115Volt 200Watt
Hoffman	ADP2
Rittal	SK3243.110
Rittal	SK3243.080
Hoffman	A16H1208SSLP
Hoffman	A16P12
Hoffman	F66W24SS
Siemens	100A
Eaton	FD3100L
Eaton	HMCP 5 Amp
Eaton	FD3015L
Atech	2D20UL
Atech	1D20UL
Atech	1D16UL
Atech	1D4UL
Emerson	CE2000MH 2KVA
Allen Bradley	1492-REC15
Allen Bradley	1769-L24ER-QBFC1B
Sola	STFE100-10N
Sola	SDN2.5-24-100P
Sola	SDN2.5-20 RED
Sola	SDU 10-24
Sola	SDU 24 BAT
Sierra Wireless	AirLink RV50 (DC)/NA
Sierra Wireless	Din Rail RV50 Mounting Bracket
Sierra Wireless	AC-12VDC Adapter for GX Series, LS5300 RV50, MP70, CG
Panorama Antenna	Low Profile 2x2 MIMO LTE/Cell 9' Cable SMA(N) Threaded Bolt
Allen Bradley 8 Pin	700-HA32224
Macromatic 8 Pin	SFP120A100
Allen Bradley 8 Pin	700-HA32224
Allen Bradley 8 Pin	700-HN100
Allen Bradley	800T-Q24R
Allen Bradley	800T-Q24G
Allen Bradley	800T-J2A
Allen Bradley	800T (Type 4,13)
Allen Bradely	1492-J4
Allen Bradley	1492-EAJ35
Allen Bradely	1' x 1-3/8" x 3' Standard Size din rail
Panduit	Standard White
Panduit	Standard White
MPElectronics	115-10-100
MPElectronics	LPC420R
MPElectronics	LM-10-100
MPElectronics	LM Surge
MPElectronics	TVB1
Dan Foss	VLT Aqua Drive 2HP
Dan Foss	130B1117 (one for each pump)
Dan Foss	130B1107 (one for each pump)
Dan Foss	Option B 130B1212 (one per VFD)

RAB	RAB PS4-11-20D2
RAB	RAB BCK-S4
RAB	RAB ALED4T105/D10/WS2
RAB	RAB BOLT4/11
RAB	RAB WSREM
RAB	W34-35L
Square D	GG40-120/240-2G-5
Current Tech.	20A, GFCI, duplex with corrosion resistant "in-use" type cover
	20A, GFCI, duplex with corrosion resistant "in-use" type cover
	20A, GFCI, duplex with corrosion resistant "in-use" type cover
	20A Roller Arm Switch IP68

VW Williams	30KW
VW Williams	100A

Revisions


Rev	Date	Description
1		
2		
3		
4		
5		
6		
7		
8		
9		
10		

HAMILTON SOUTHEASTERN UTILITIES, INC.

LIFT STATION ELECTRICAL ONE-LINE
PROJECT EXAMPLE ONLY

CERTIFIED BY:

Date


811
FOR CALLS IN INDIANA
1-800-382-5544
CALL YOUR 811

Drawn By:
MLN

Checked By:
KCJ

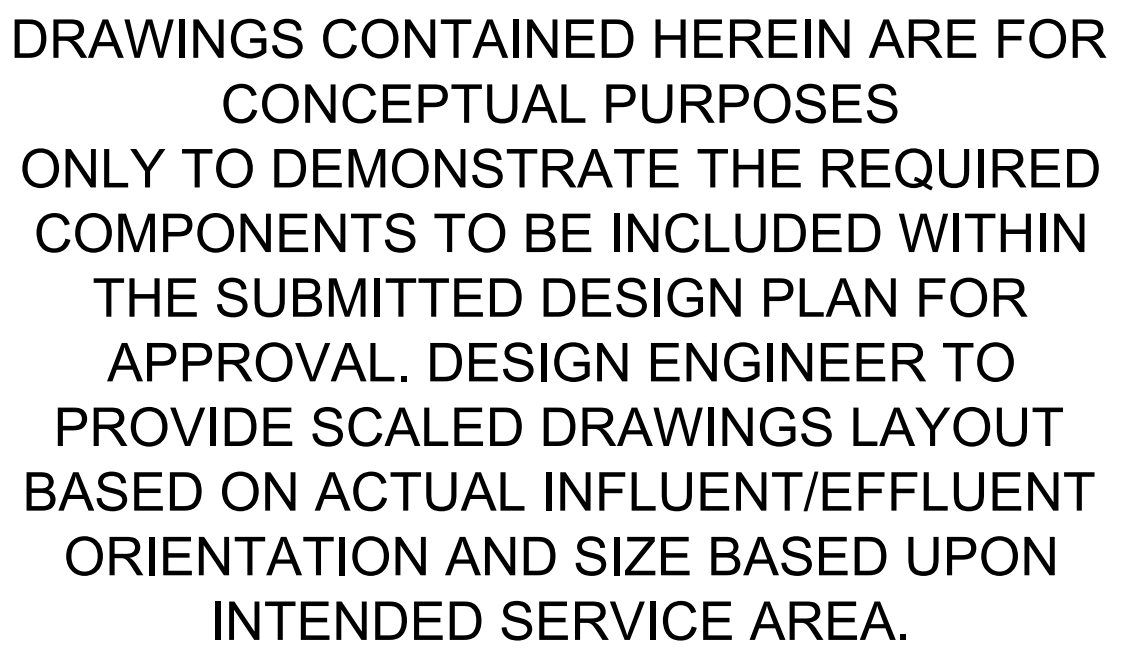
Quality Assurance:
RMH

Scale: 1"=10'

Sheet
LS-4

Date

Project Number



CONTROL PANEL (NOT TO SCALE)

1/16" EXPANDED ALUMINUM BACK, SIDE AND DOOR FILLER PANELS, LATTICE PATTERN

ALUMINUM MOUNTING POSTS

DOUBLE SECTION ALUMINUM DOOR PANELS, (2) STAINLESS STEEL HINGES PER PANEL. PROVIDE WITH CENTER MOUNTED STAINLESS STEEL PADLOCK LATCH

MINIMUM 18" FROM TOP OF CONDUITS TO BOTTOM OF CONTROL PANEL

TERMINATE CONDUITS MINIMUM 6" ABOVE CONCRETE

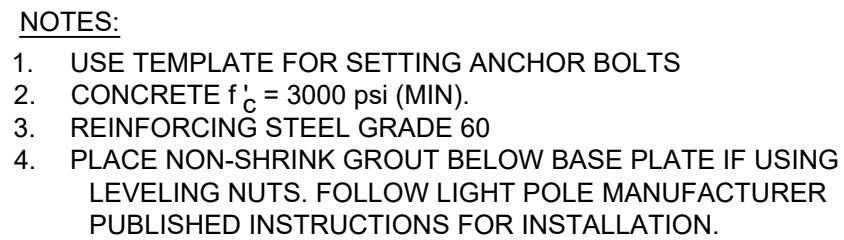
SEALOFFS, IF REQUIRED

TO WET WELL. ALL CONDUITS ARE NOT SHOWN. SEE ONE-LINE DIAGRAM

TO AUTOMATIC TRANSFER SWITCH

CONTROL PANEL AIR-BREAK

NO SCALE (CONCEPTUAL)



6" LENGTH OF GENERATOR EXTERIOR HOUSING

6" WIDTH OF GENERATOR EXTERIOR HOUSING

#5 @ 12" O.C. EACH WAY TOP & BOTTOM

3000# CONCRETE PAD TURNED DOWN ON ALL (4) SIDES

OUTLINE OF GENERATOR EXTERIOR HOUSING

GENERATOR PAD PLAN VIEW

SCALE: NONE

