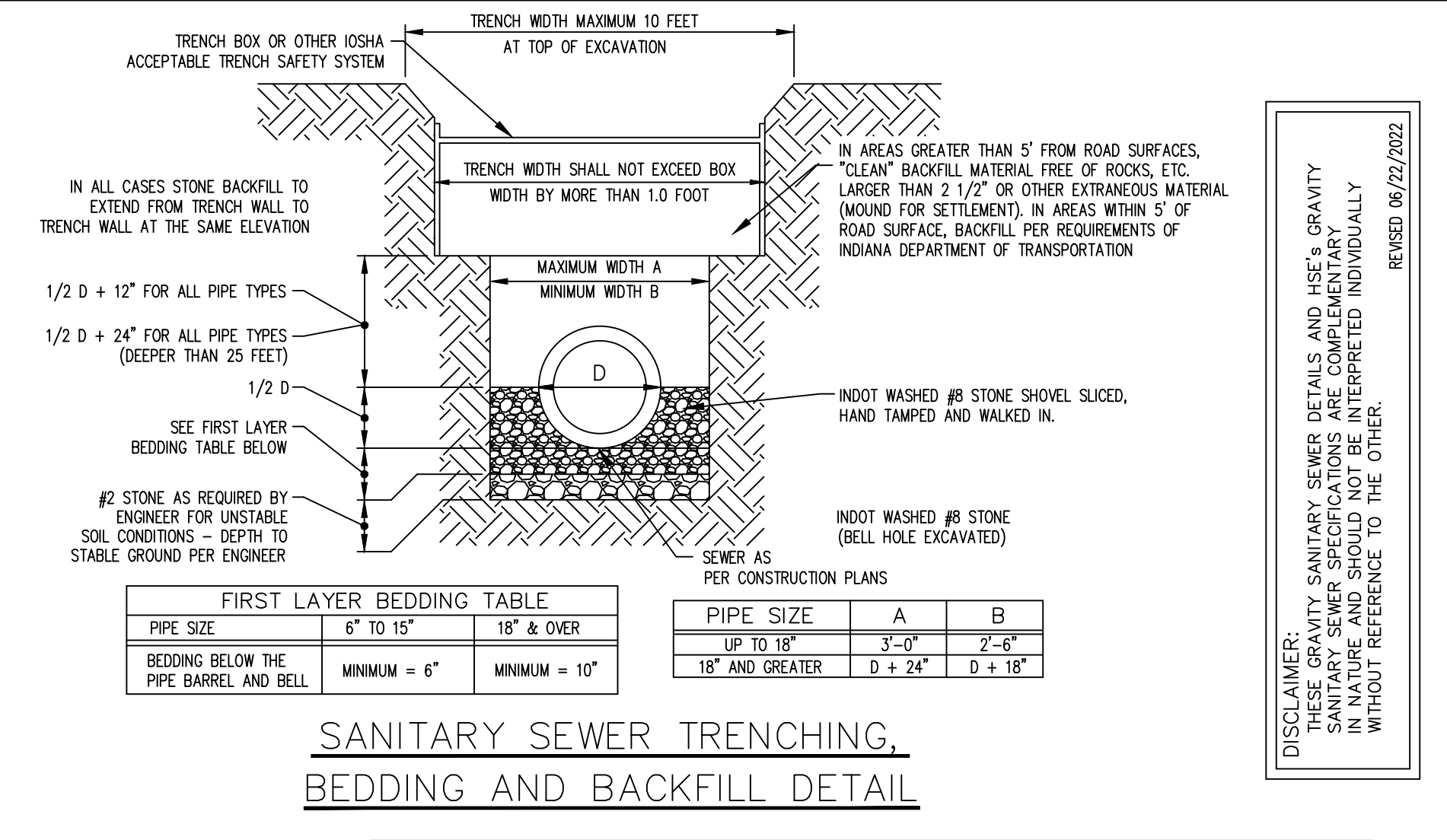
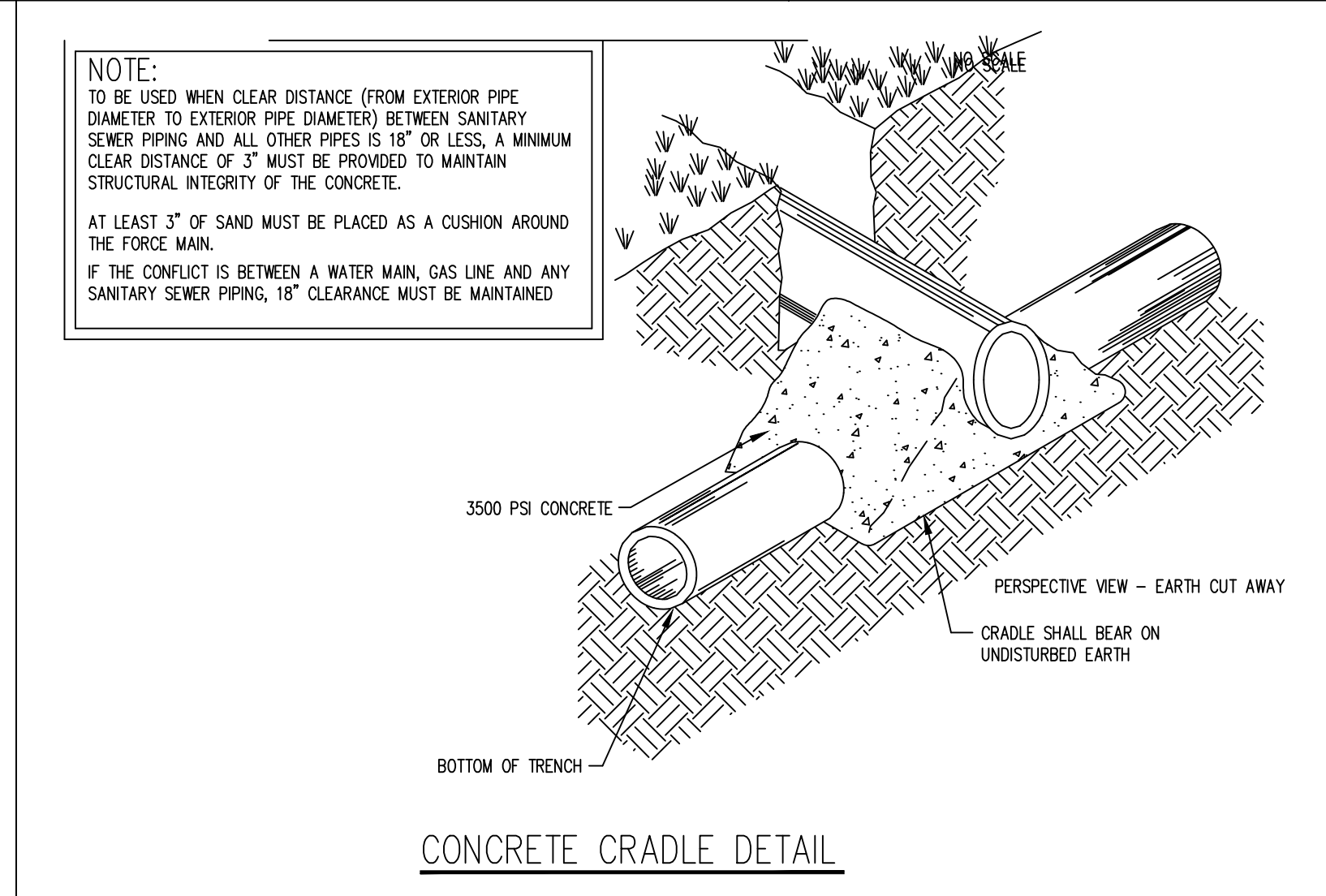
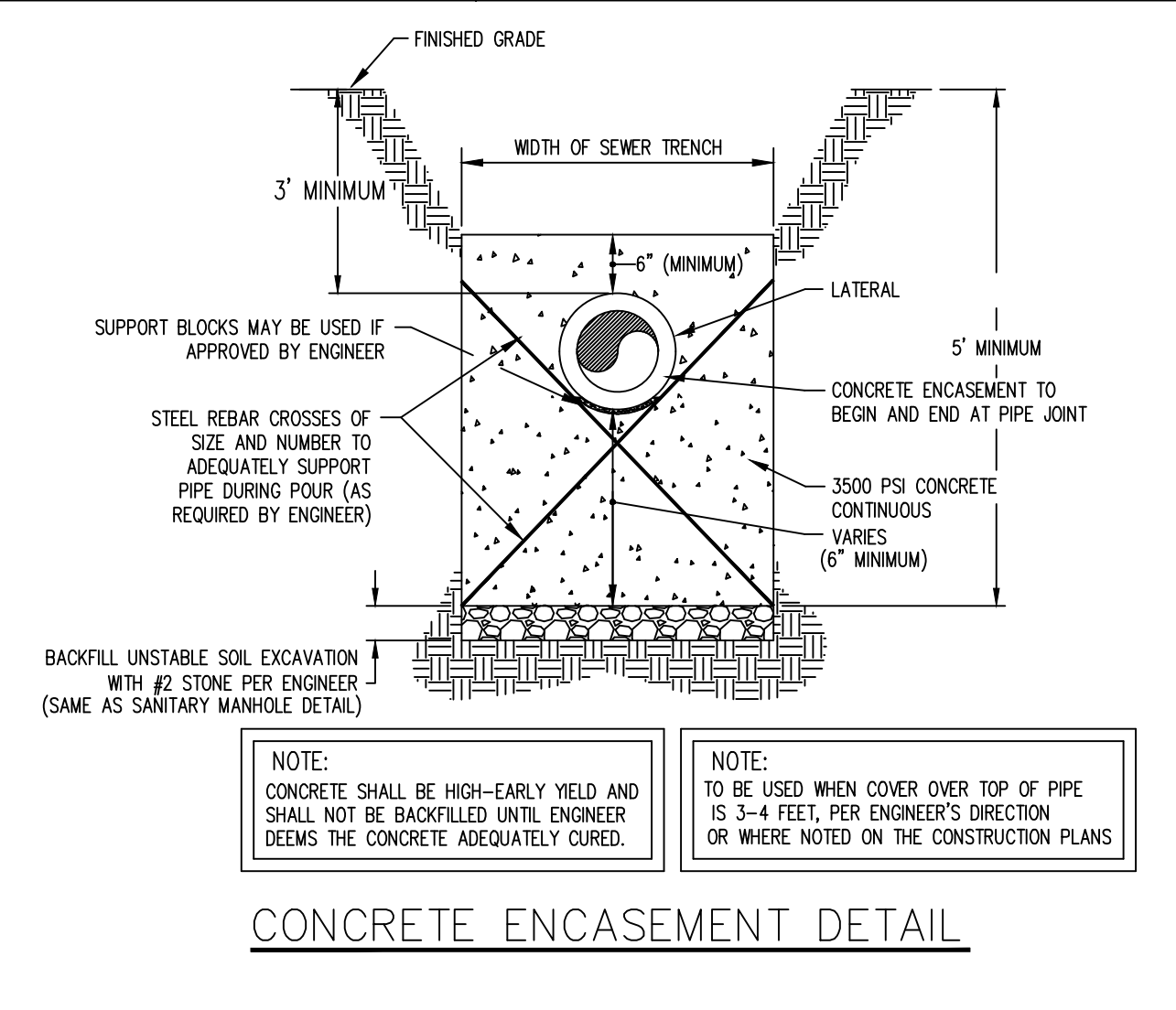
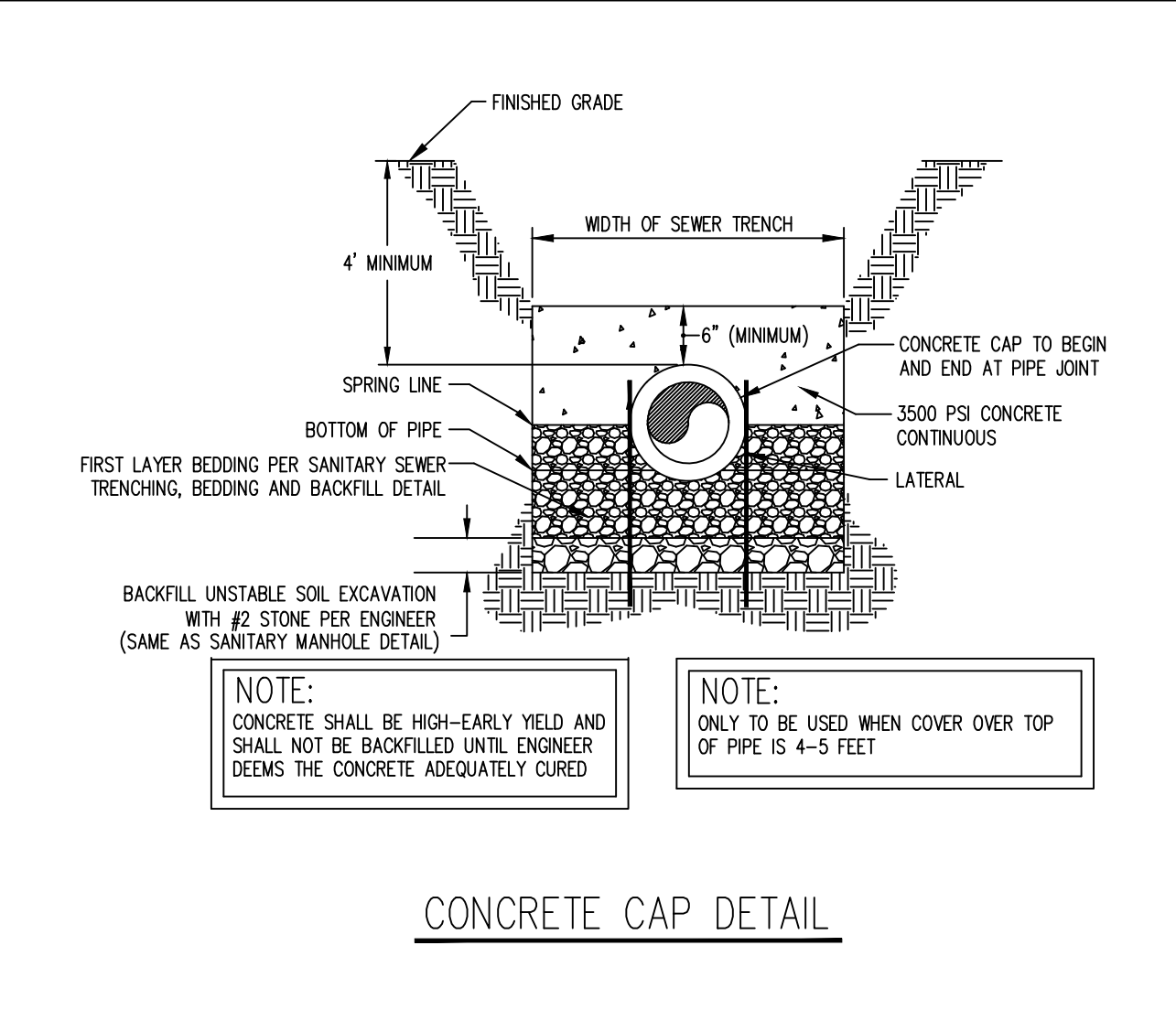
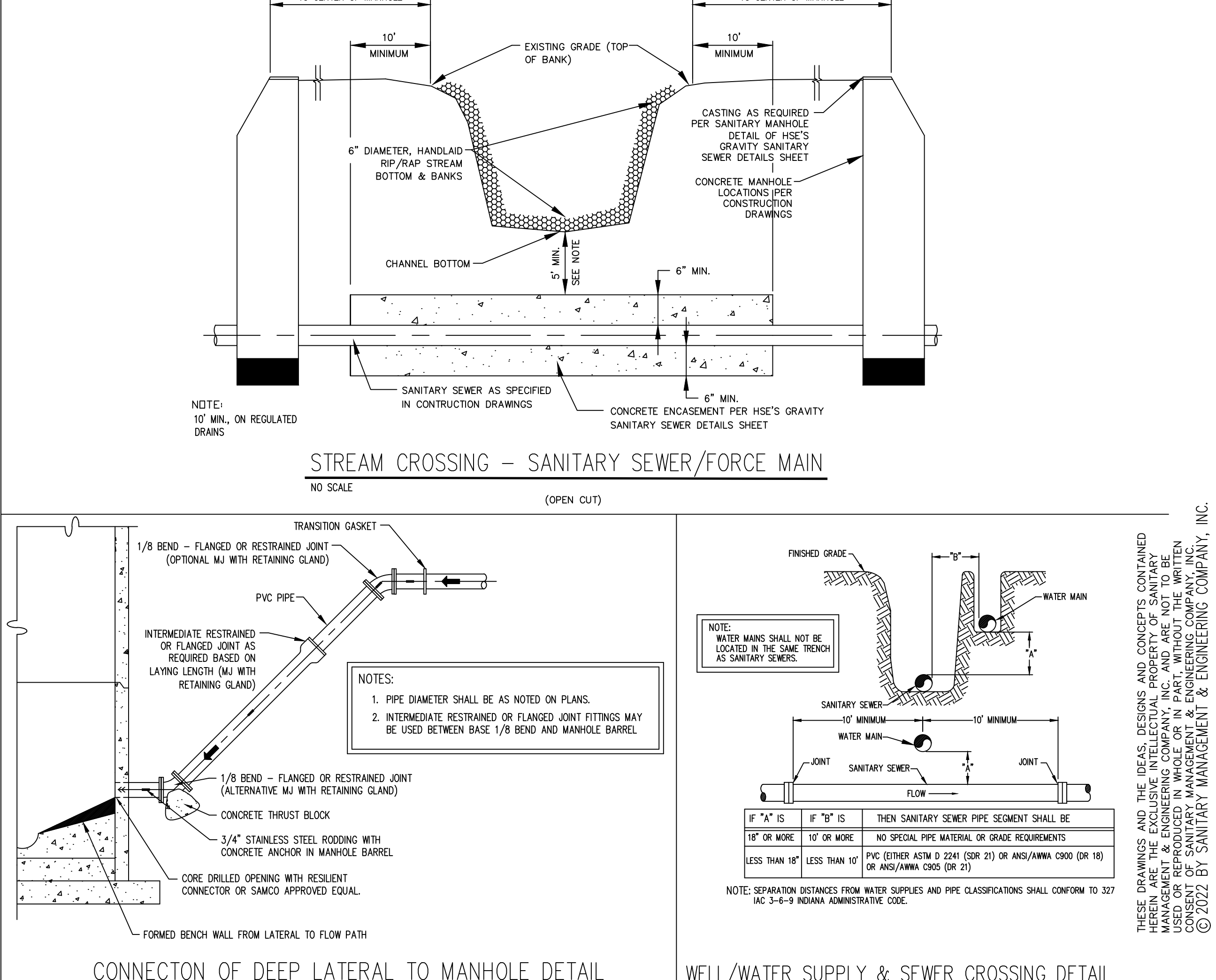
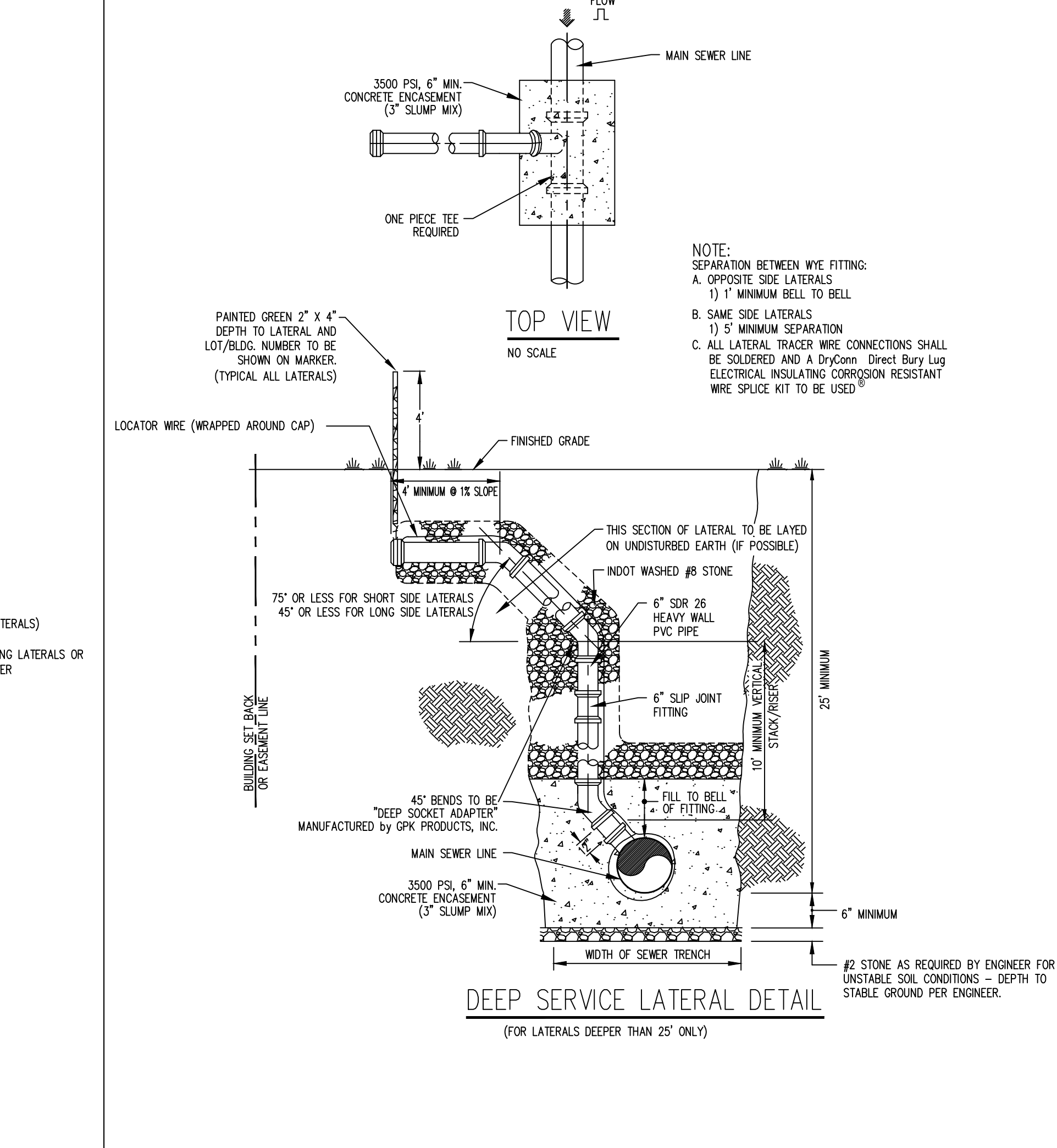
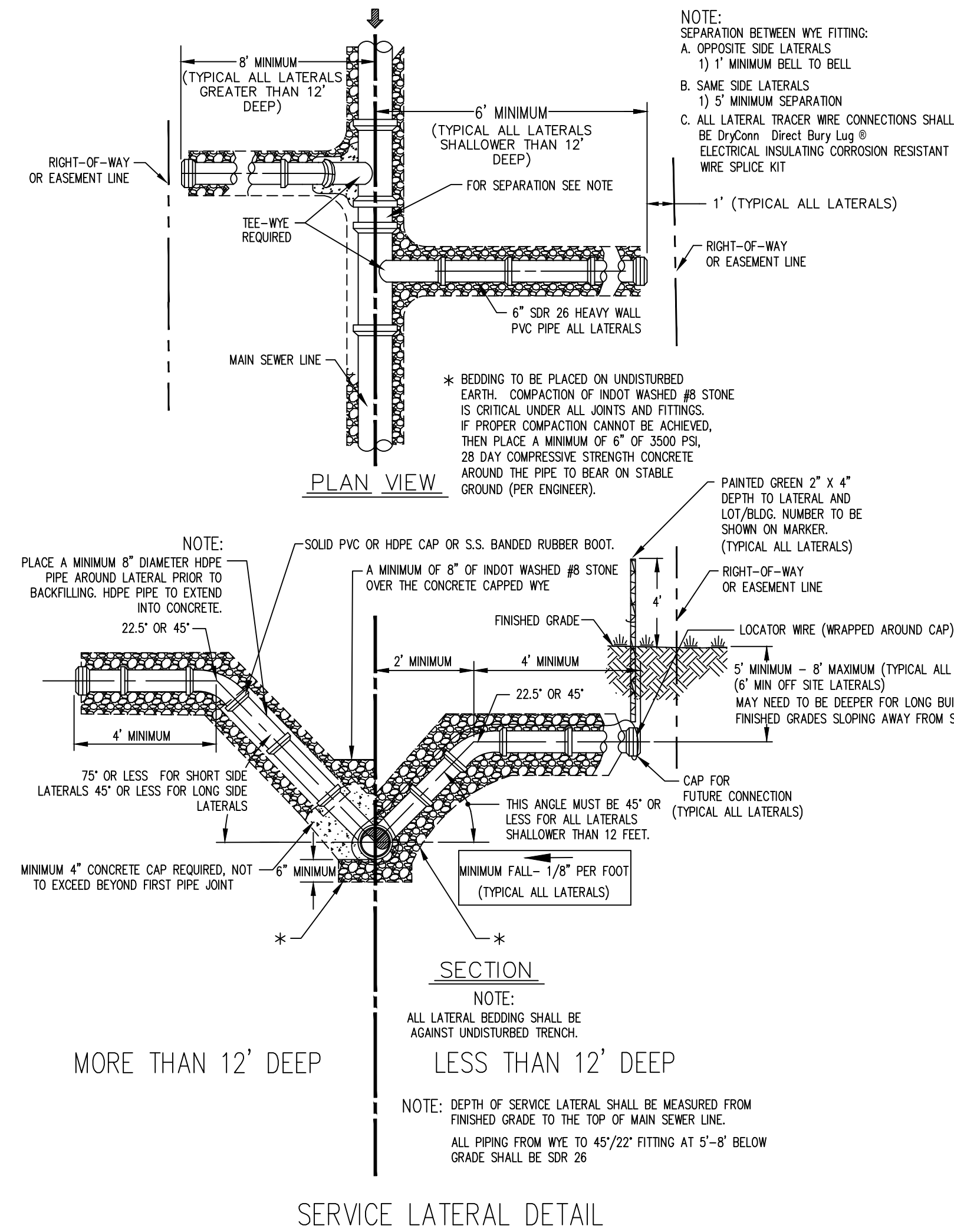
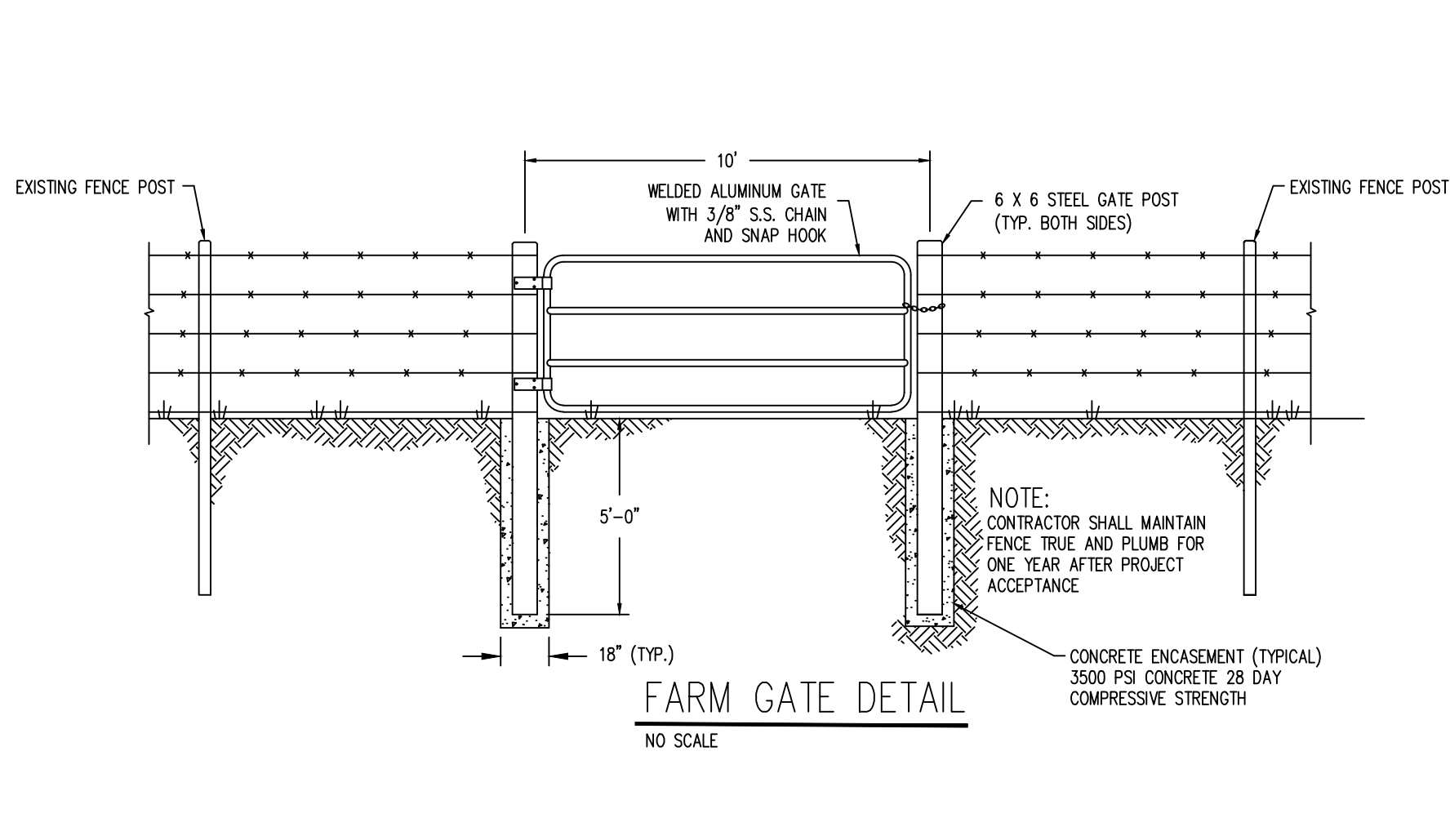
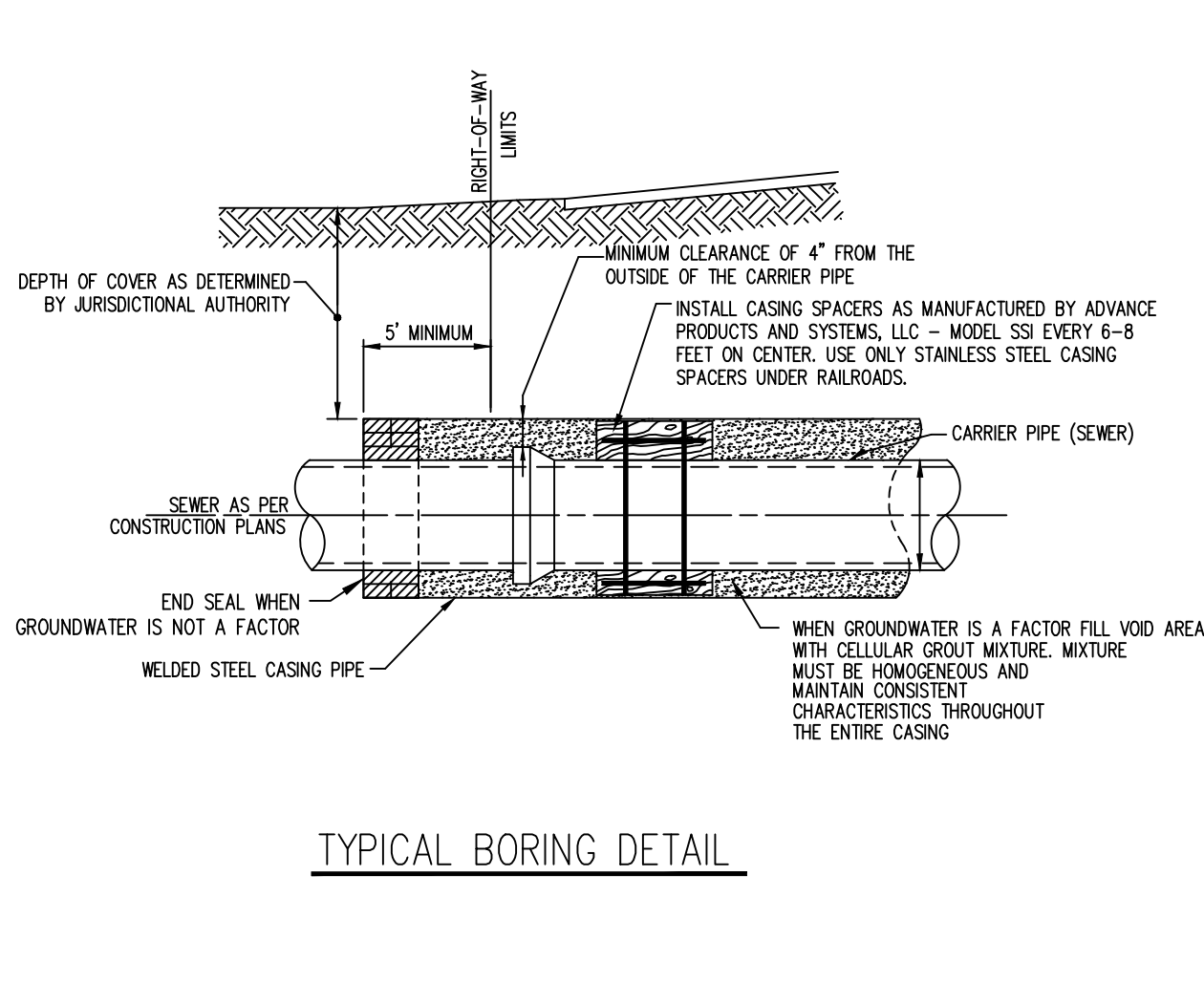
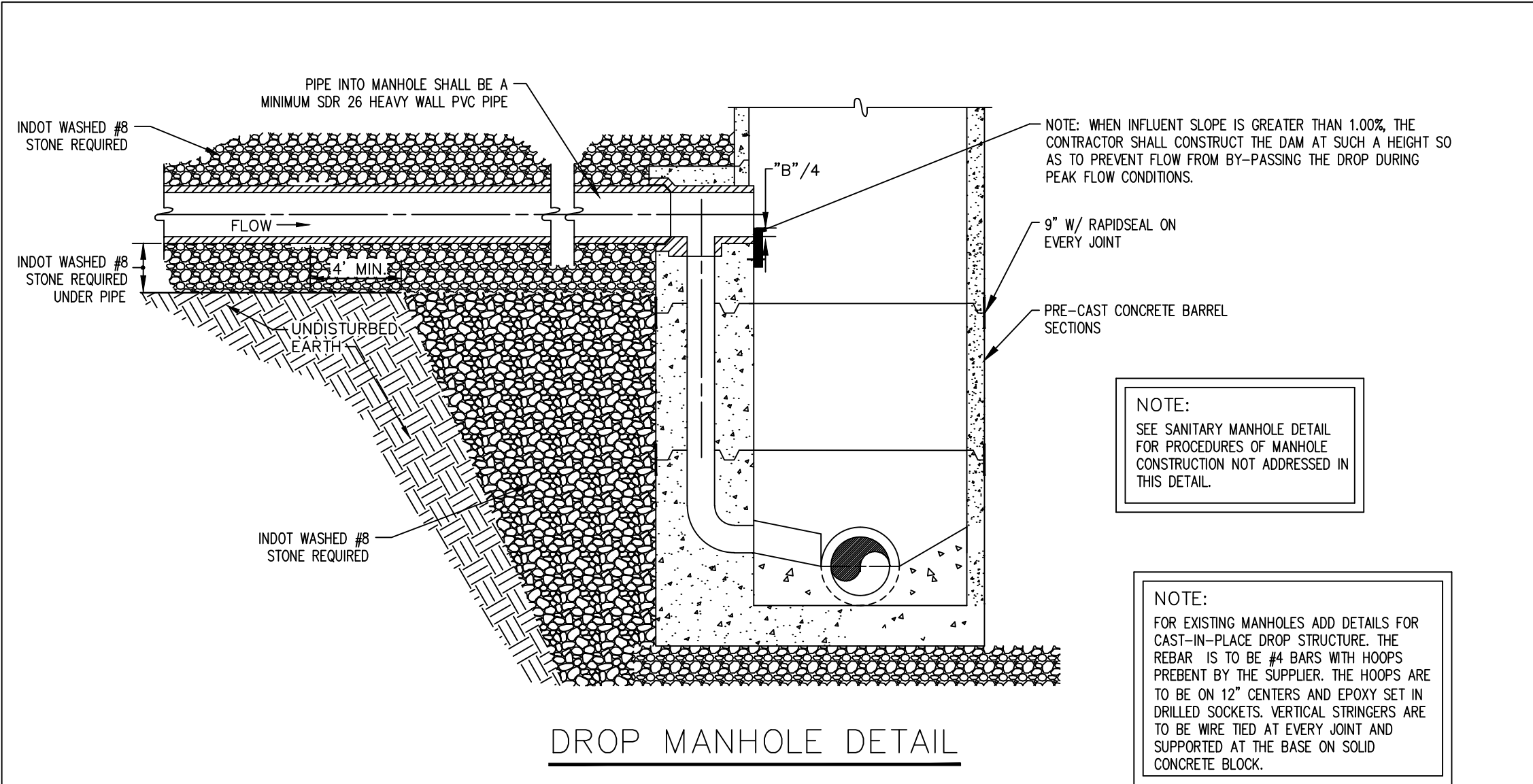


TYPICAL CLEANOUT DETAILS



Drawing: C:\Users\khalid\OneDrive - General Engineering\HSE_Details - General Engineering\HSE_Details - And_Specialty\Gravity Infrastructure\CAD\Gravity_Sanitary_Sewer_Detail-12-28-2022.dwg | Layout: 2 | Plotted: 12/28/22 @ 02:28:41 | LastSavedBy: khalid



NOTE: MANHOLE SECTIONS SHALL CONFORM TO ASTM C 478. UTILIZING 4,000 PSI CONCRETE WITH PENETRON ADMIXTURE. JOINTS SHALL CONFORM TO ASTM C 443.

*IN GENERAL, ONLY THE BOTTOM 8 FEET OF THE MANHOLE, TRANSITION FROM 5 FEET AND LARGER DIAMETER BARREL SECTIONS TO 4 FEET BARREL SECTIONS AND/OR CASTING SHALL BE THROUGH USE OF 1 OR MORE CONE SECTIONS.

LARGEST SEWER SIZE	A
UP TO 21"	4'-0"
OVER 21"	5'-0" *

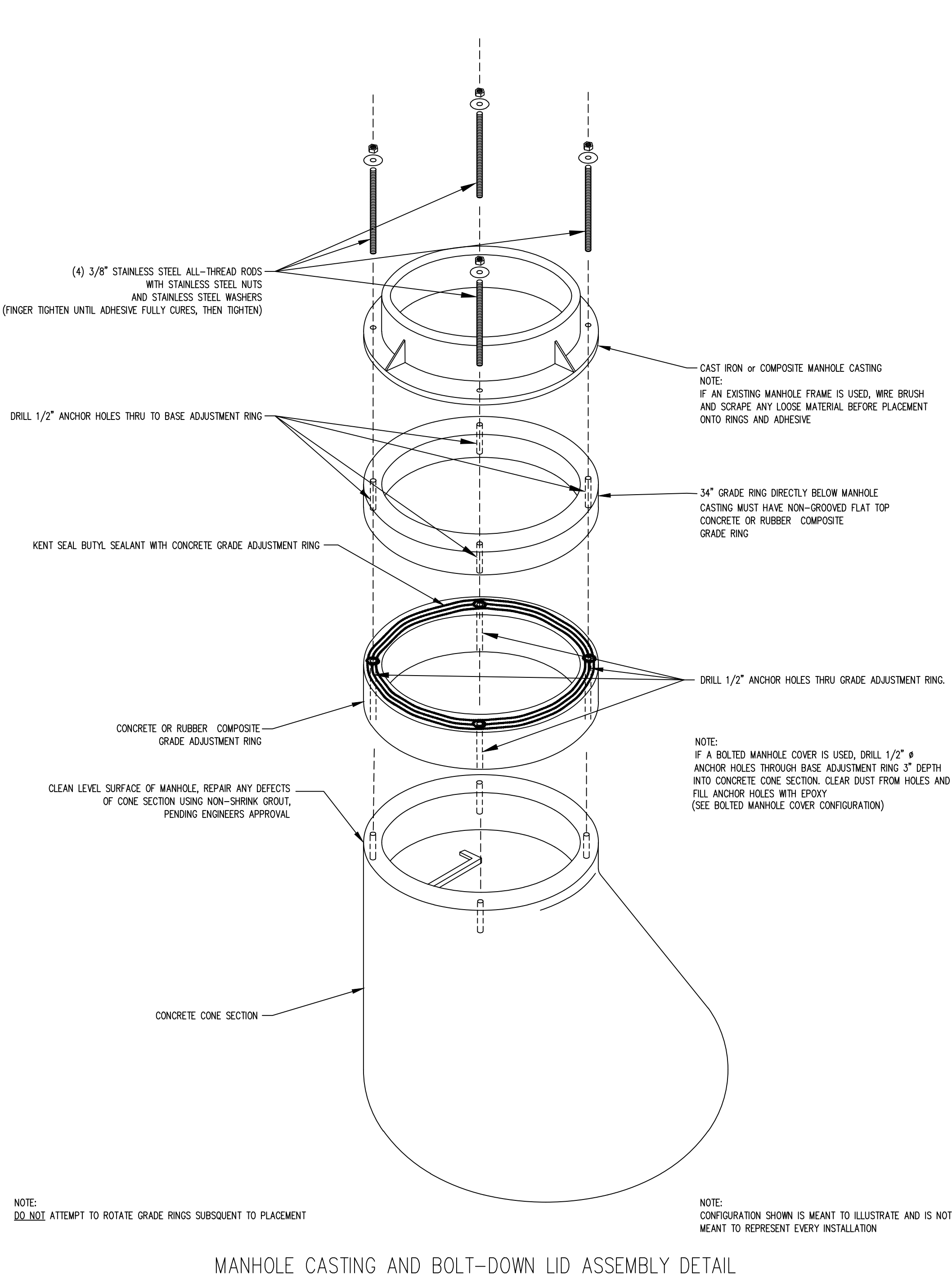
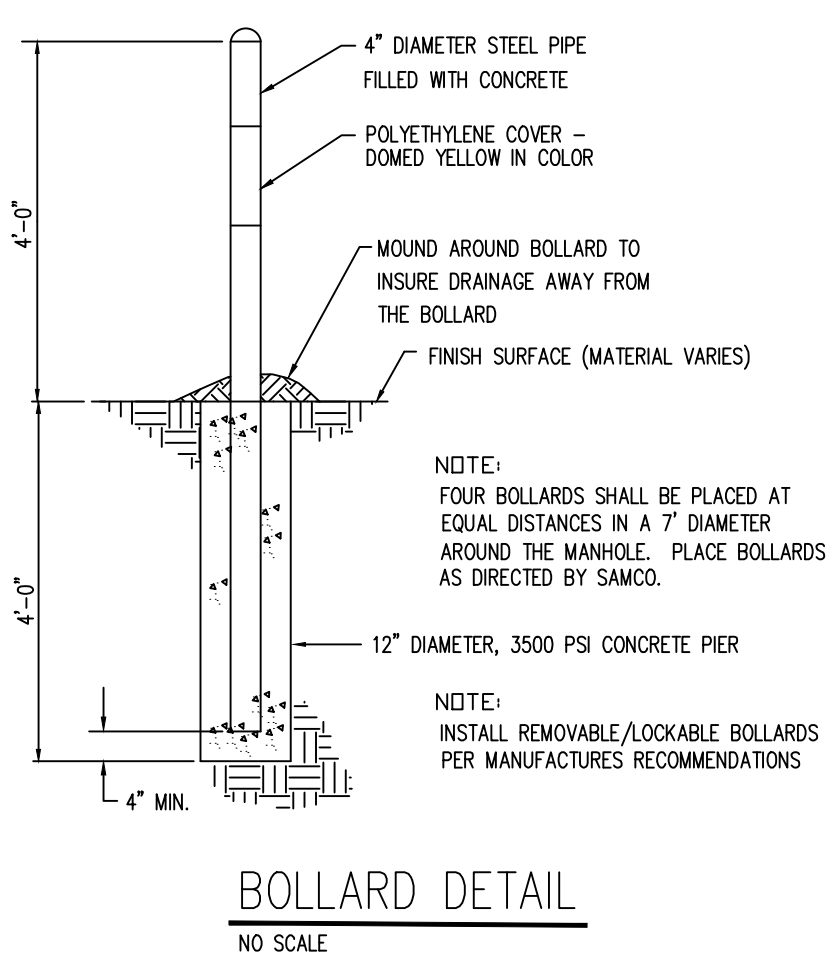
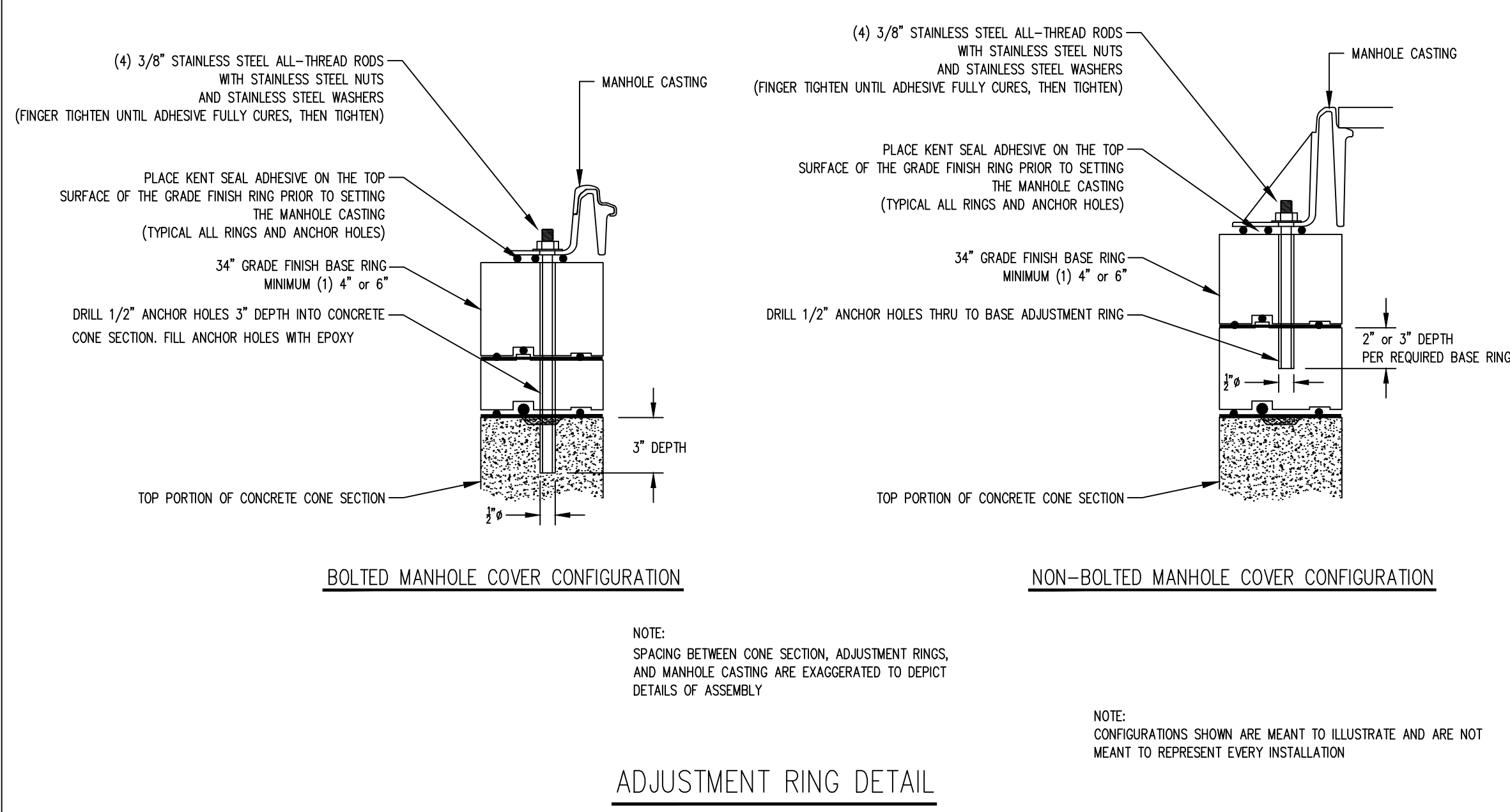
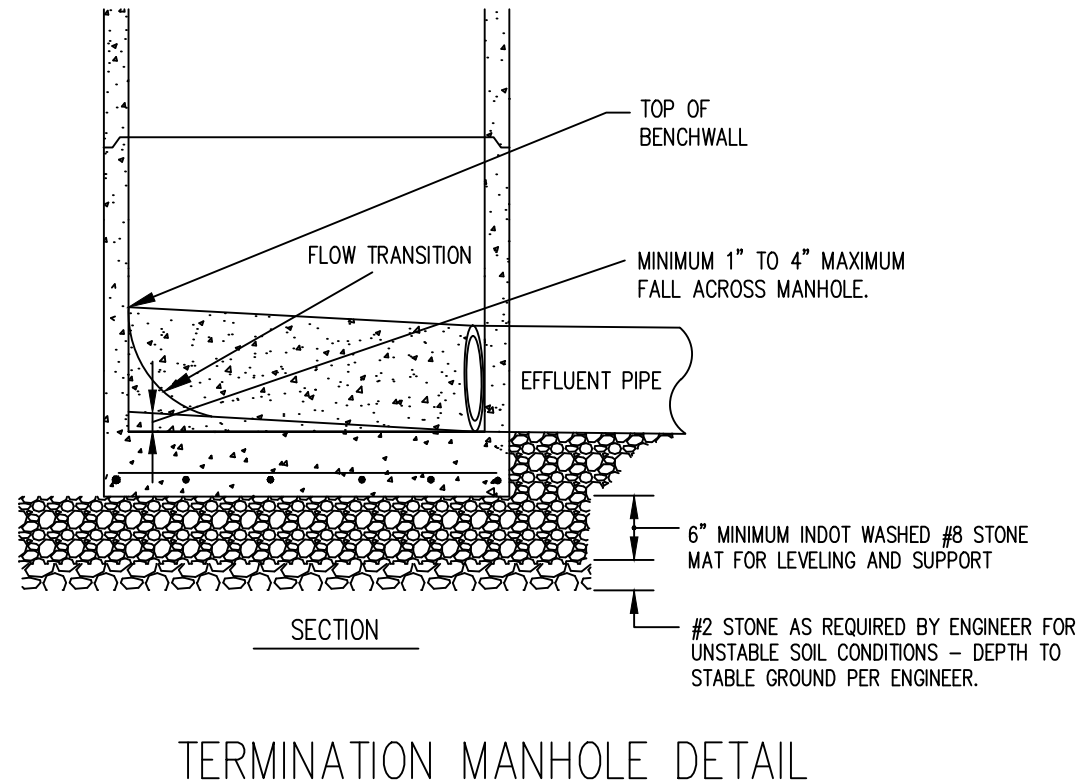
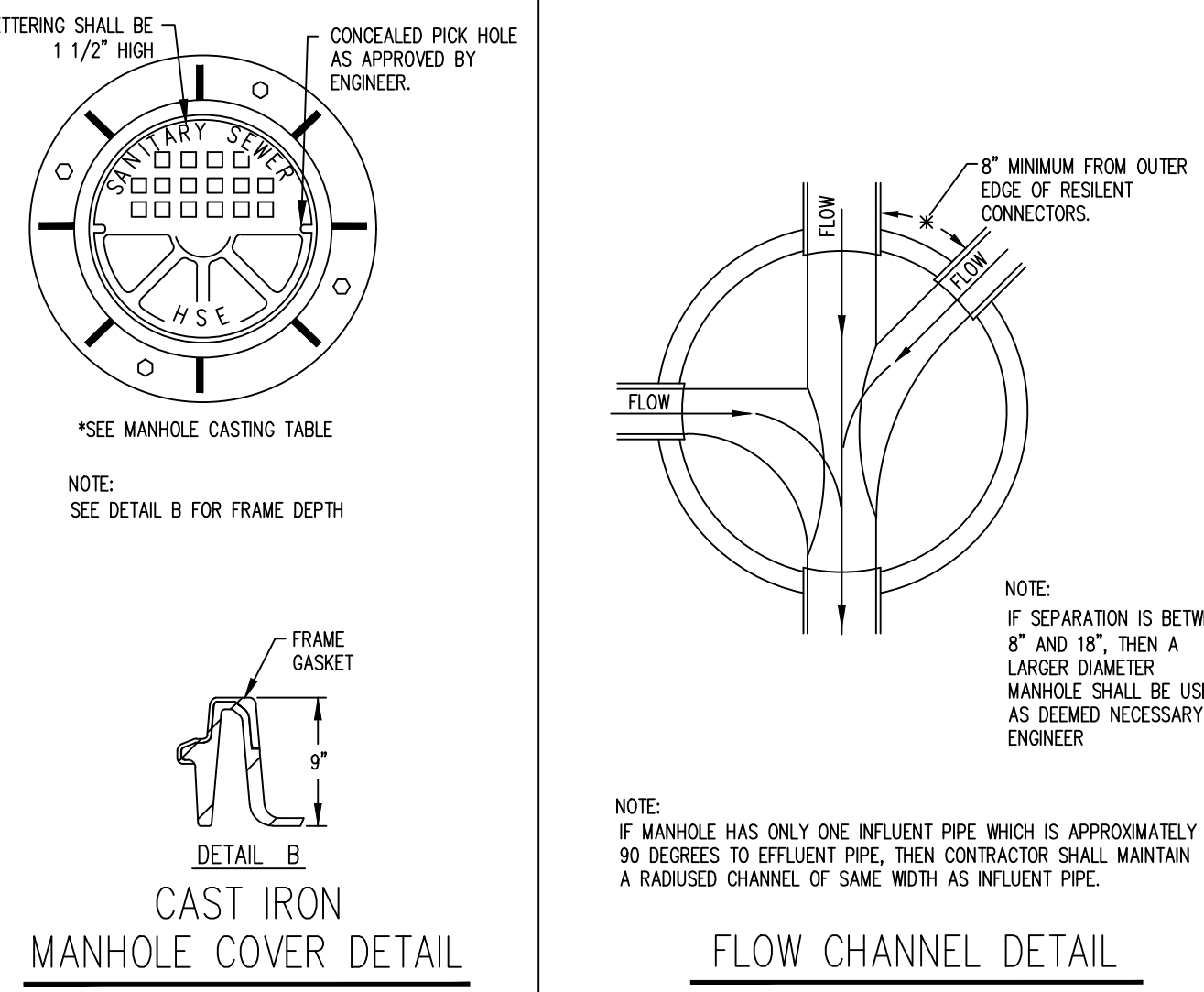
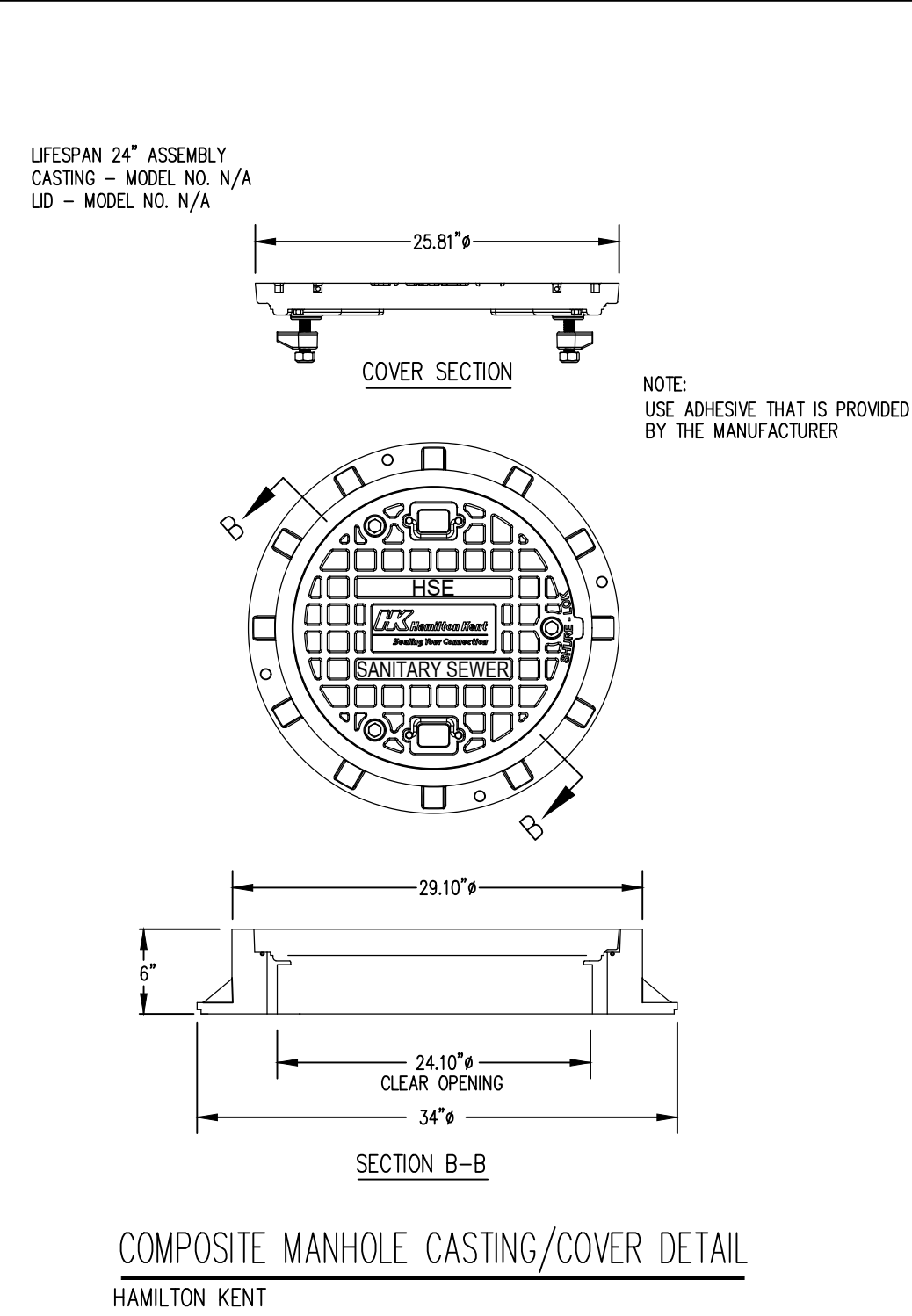
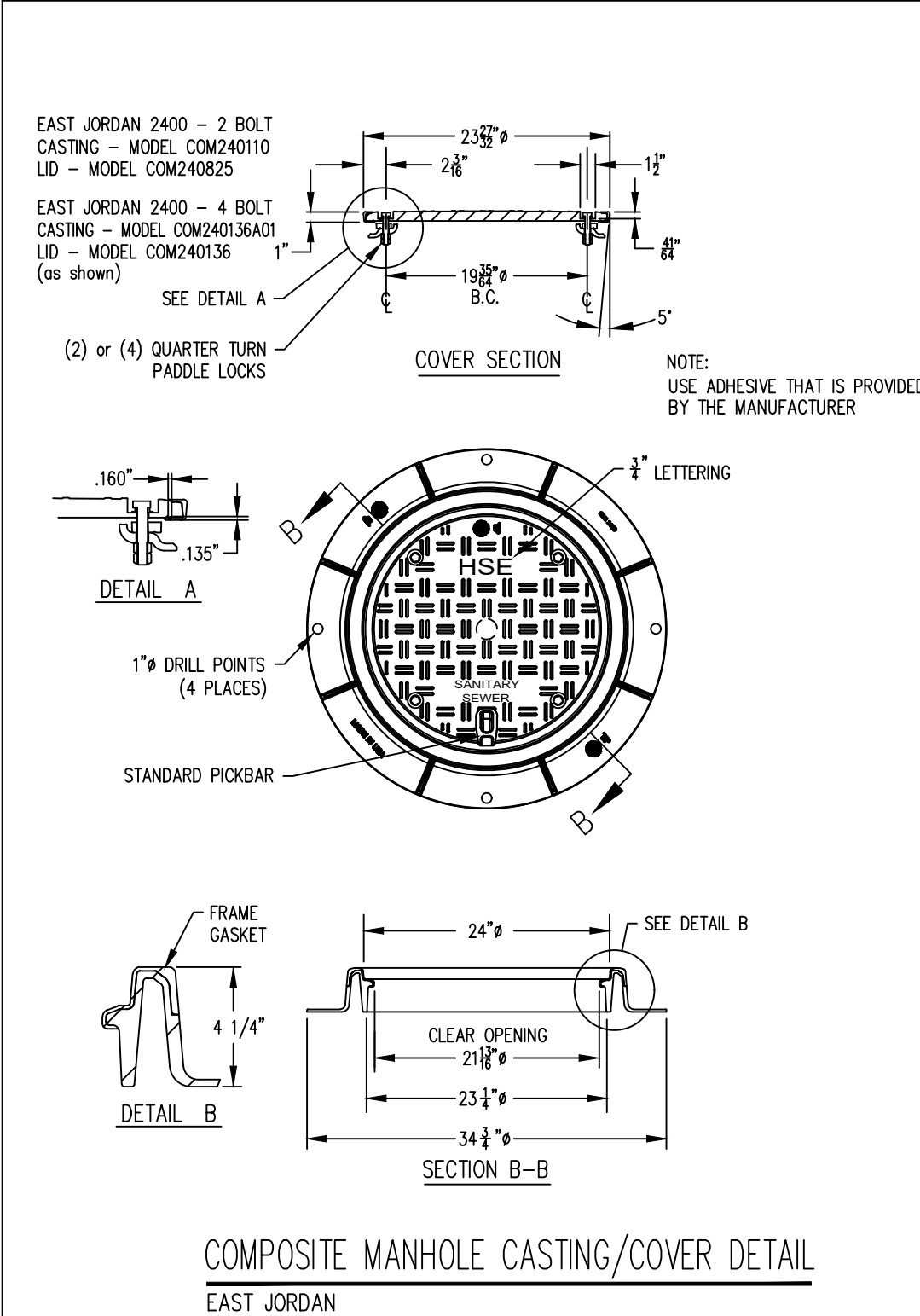
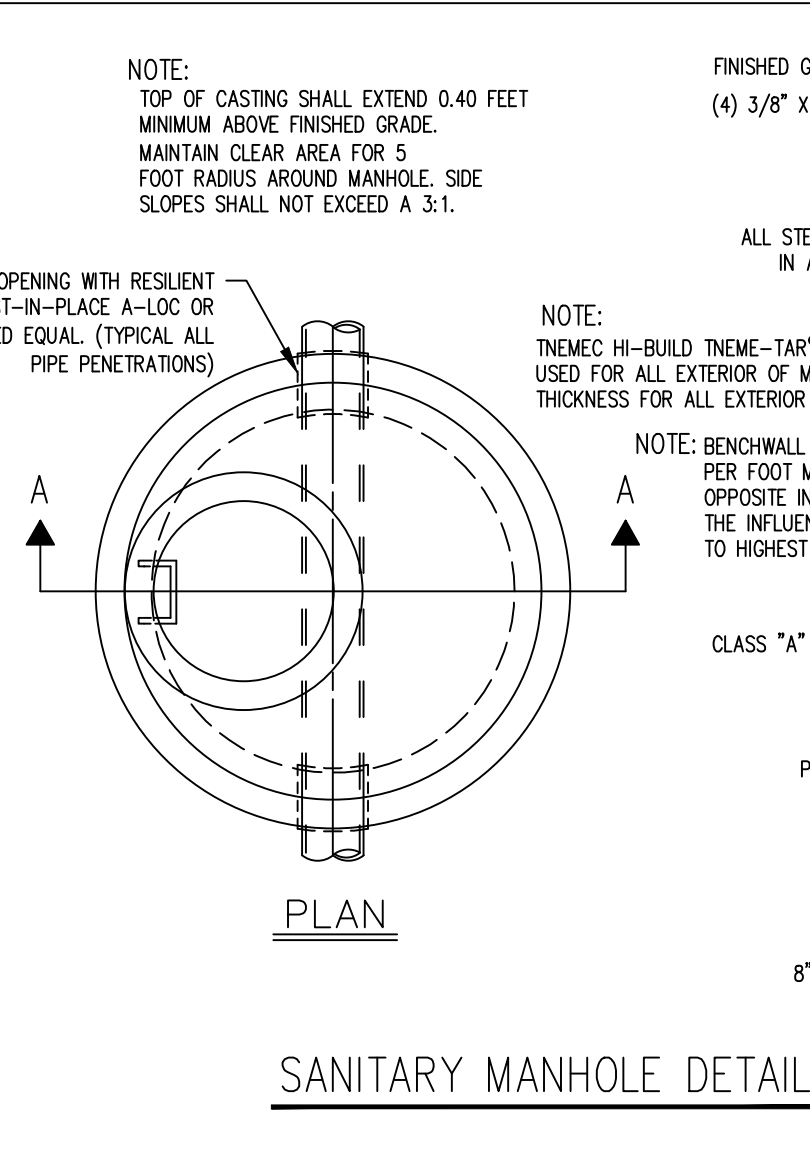
* MANHOLE CASTING TABLE

LOCATION	MODEL	COVER
18" INCHES OR MORE ABOVE 100 YEAR FLOOD ELEVATION OF ALL WATERWAYS	EAST JORDAN 1050-21 HAMILTON KENT ~30" LIFESPAN SYSTEM	HEAVY DUTY SOLID SHURE-LOK ALIGNMENT SYSTEM
LESS THAN 18" ABOVE 100 YEAR FLOOD ELEVATION OF ALL WATERWAYS	EAST JORDAN 1050-21WT HAMILTON KENT ~30" LIFESPAN SYSTEM	HEAVY DUTY SOLID SHURE-LOK ALIGNMENT SYSTEM

LID

OWNERSHIP	LETTERING
HAMILTON SOUTHEASTERN UTILITIES, INC.	"SANITARY SEWER" - HSE
PRIVATE	"SANITARY SEWER"


ALL CASTINGS TO BE SUPPLIED WITH FOUR (4) ANCHOR BOLT HOLES



THESE DRAWINGS AND THE IDEAS, DESIGNS AND CONCEPTS CONTAINED HEREIN ARE THE PROPERTY OF SAMCO Engineering Company, INC. AND ARE NOT TO BE USED OR REPRODUCED IN WHOLE OR IN PART, WITHOUT THE WRITTEN CONSENT OF SAMCO Engineering Company, INC. © 2022 BY SAMCO Engineering Company, INC.

DISCLAIMER: THESE GRAVITY SANITARY SEWER DETAILS AND HSE'S GRAVITY SANITARY SEWER SPECIFICATIONS ARE COMPLEMENTARY IN NATURE AND SHOULD NOT BE INTERPRETED INDIVIDUALLY WITHOUT REFERENCE TO THE OTHER. REVISION 08/22/2022

PROJECT		JOB NO.	
PREPARED FOR		HAMILTON SOUTHEASTERN UTILITIES, INC.	
TITLE		GRAVITY SANITARY SEWER DETAILS	
SCALE:		N/A	



SAMCO
Sanitary Management &
Engineering Company, Inc.
10000 W. 100th Ave., Suite 400
FISKERS, INDIANA 46038
317-577-1150 Fax 317-577-3842

SHEET
2

SHEET 2 OF 2

DRAWN				REVISIONS			
BY	DATE	CHECK NO.	BY	DATE	CHECK	NO.	DATE
		1	WLF	06/22/2022	1X		UPDATED FOR 2022