

DISCLAIMER

HSE'S LIFT STATION PLAN, LIFT STATION AND FORCE MAIN DETAILS AND LIFT STATION AND FORCE MAIN SPECIFICATIONS ARE COMPLEMENTARY IN NATURE AND SHOULD NOT BE INTERPRETED INDIVIDUALLY WITHOUT REFERENCE TO THE OTHER SHEETS.

NOTE: CONTRACTOR SHALL CONTACT THE UTILITIES ENGINEER PRIOR TO PURCHASING ANY EQUIPMENT FOR THIS LIFT STATION TO VERIFY PROPER INTERPRETATION OF SPECIFICATIONS AND PLANS.

THESE DRAWINGS AND THE IDEAS, DESIGNS AND CONCEPTS CONTAINED HEREIN ARE THE EXCLUSIVE INTELLECTUAL PROPERTY OF SANITARY MANAGEMENT & ENGINEERING COMPANY, INC. AND ARE NOT TO BE USED OR REPRODUCED IN WHOLE OR IN PART, WITHOUT THE WRITTEN CONSENT OF SANITARY MANAGEMENT & ENGINEERING COMPANY, INC. © 2018 BY SANITARY MANAGEMENT & ENGINEERING COMPANY, INC.

REVISIONS	
NO.	DESCRIPTION
1	CHANGED 2" TO 3" ON AIR/VACUUM RELEASE MANHOLE DETAILS
2	REMOVED DUCTILE IRON TEES FROM AIR RELEASE DETAILS TO ROMAC SST SLEEVE
3	

DRAWN	
BY	DATE
WPF	02/27/2018
WPF	03/02/2018
WPF	03/02/2018

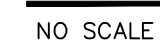
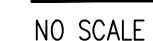
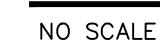
CHECKED	
BY	DATE
TK	02/27/2018
TK	03/02/2018
TK	03/02/2018

PROJECT	
JOB NO.	DESCRIPTION
-	

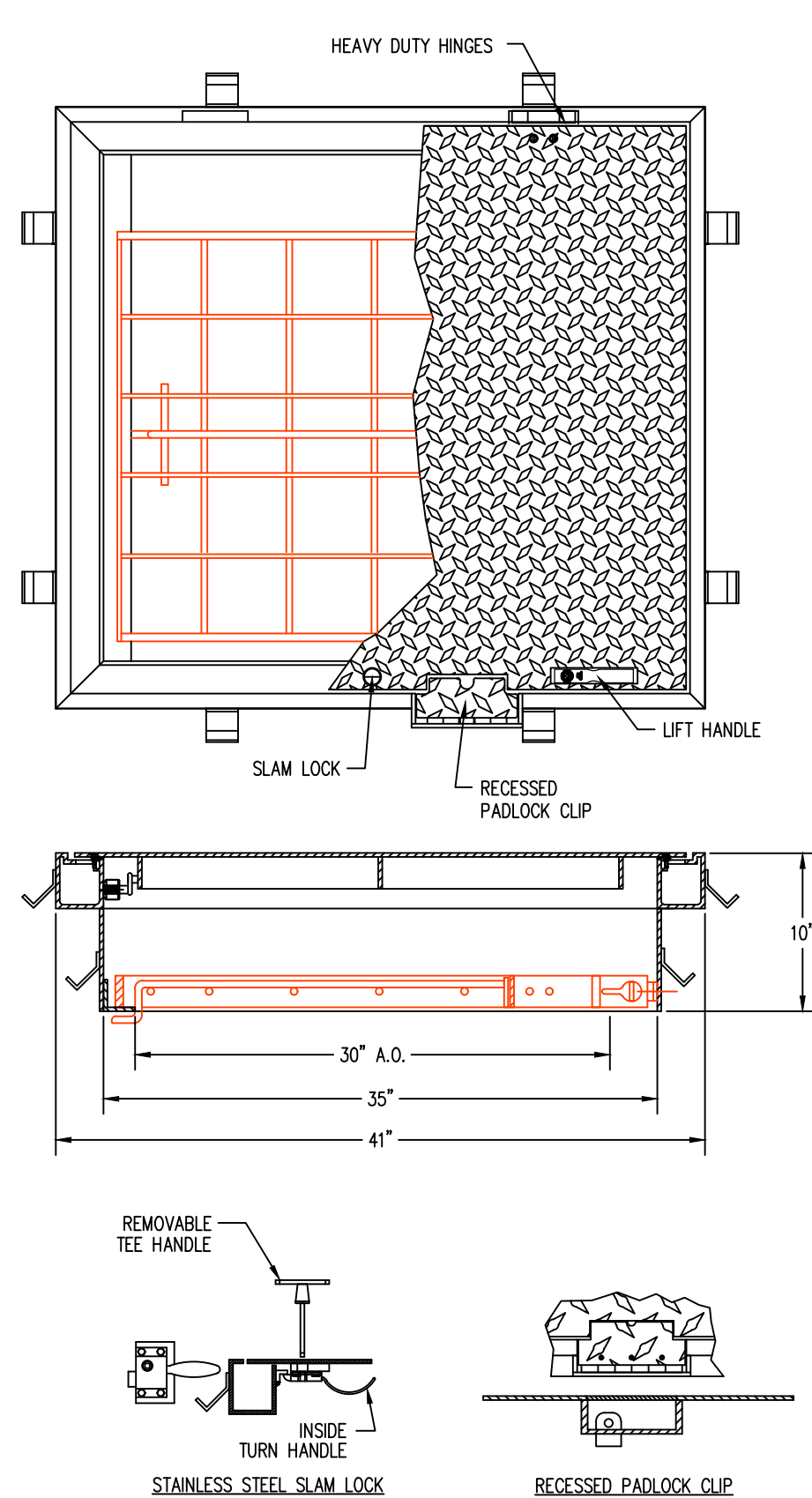
PREPARED FOR	
TITLE	SCALE
HAMILTON Southeastern Utilities, INC.	N/A
LIFT STATION and FORCE MAIN DETAILS	

SHEET	
SHEET	NO.
1	3

SAMCO
Sanitary Management & Engineering Company, Inc.
FISHERS, INDIANA 46038
317-577-1150 Fax 317-577-3642



THESE DRAWINGS AND THE IDEAS, DESIGNS AND CONCEPTS CONTAINED
HEREIN ARE THE EXCLUSIVE INTELLECTUAL PROPERTY OF SANITARY
MANAGEMENT & ENGINEERING COMPANY, INC. AND ARE NOT TO BE
USED OR REPRODUCED IN WHOLE OR IN PART, WITHOUT THE WRITTEN
CONSENT OF SANITARY MANAGEMENT & ENGINEERING COMPANY, INC.
©2018 BY SANITARY MANAGEMENT & ENGINEERING COMPANY, INC.



STYLE "CLS1" ACCESS HATCH, AS MANUFACTURED BY E.J.

MATERIAL SHALL BE 6061-T6 ALUMINUM FOR BARS, ANGLES, AND EXTRUSIONS. 1/4" DIAMOND PLATE SHALL BE 5086 ALUMINUM.

UNIT DESIGNED PEDESTRIAN RATED, FOR A MINIMUM LIVE LOAD OF 300 LBS./SQ. FT.

HINGES SHALL BE OF HEAVY DUTY DESIGN. MATERIAL SHALL BE GRADE 316 STAINLESS STEEL. EACH HINGE SHALL HAVE A GRADE 316 STAINLESS STEEL, 3/8" DIAMETER PIN. HINGES SHALL BE FASTENED TO THE CHANNEL FRAME AND DIAMOND PLATE USING GRADE 316 STAINLESS STEEL BOLTS AND NY-LOCK NUTS.

EACH DOOR SHALL BE EQUIPPED WITH A STAINLESS STEEL HOLD OPEN ARM. DOOR SHALL LOCK OPEN IN THE 90 DEGREE POSITION. HOLD OPEN ARM SHALL BE FASTENED TO THE FRAME WITH A 1/2" GRADE 316 STAINLESS STEEL BOLT.

CHANNEL FRAME SHALL BE OF EXTRUDED ALUMINUM. FRAME SHALL HAVE A DOVE TAIL GROOVE TO ACCEPT A 1/8" SILICONE CUSHION GASKET. CHANNEL FRAME SHALL BE A MINIMUM OF 1/4" THICK, WITH A MINIMUM CROSS SECTION OF 7.5".

EXTERIOR OF FRAME WHICH COMES IN CONTACT WITH THE CONCRETE SHALL BE COATED WITH ONE COAT OF BLACK PRIMER.

HATCH COVER SHALL BE SUPPLIED WITH STAINLESS STEEL LIFT SPRING.

EACH "CLM1" STYLE HATCH IS SUPPLIED WITH A 1-1/2" THREADED DRAIN COUPLER ON UNDERSIDE OF CHANNEL FRAME FOR PIPE CONNECTION.

ALL HARDWARE SHALL BE STAINLESS STEEL.

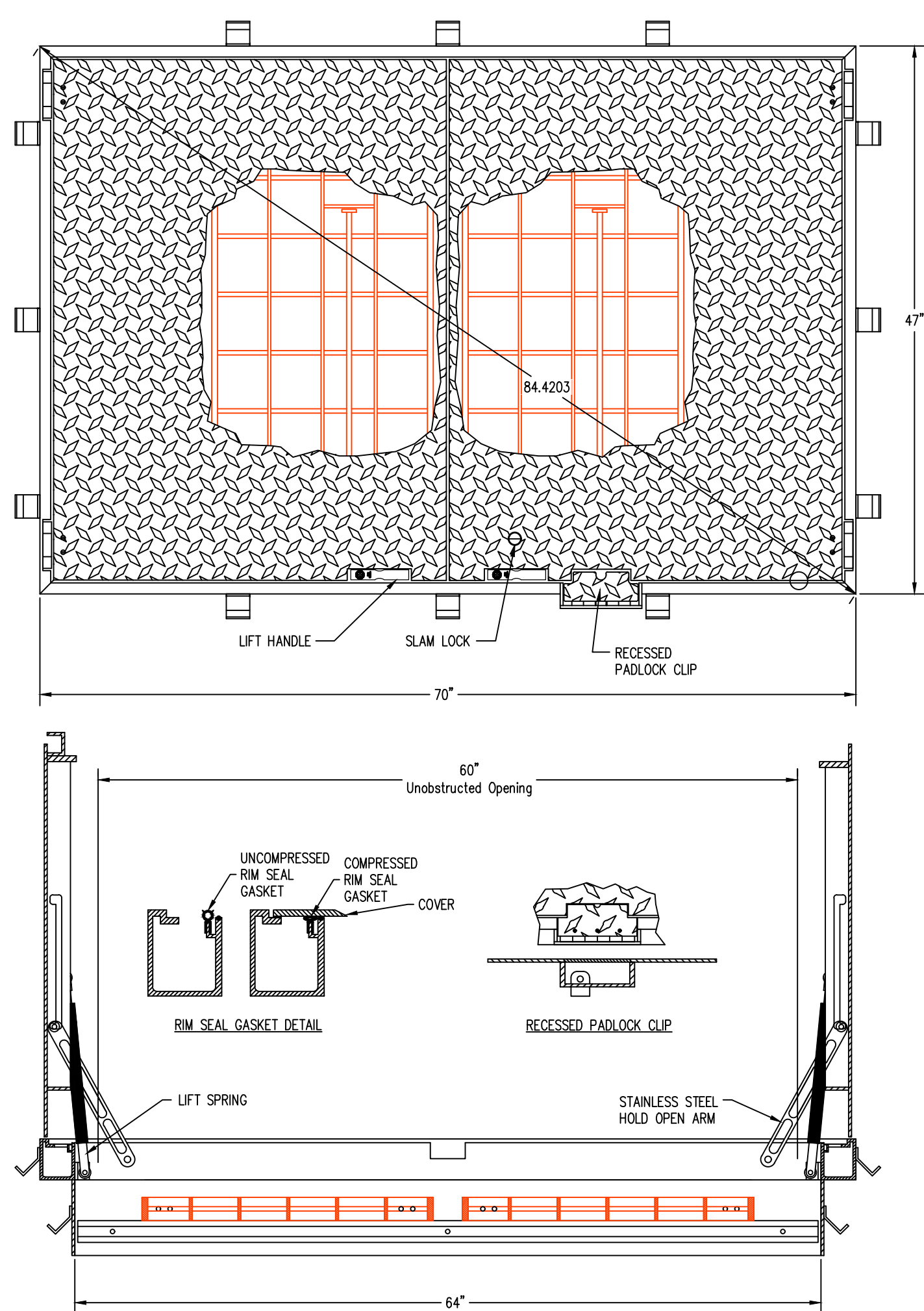
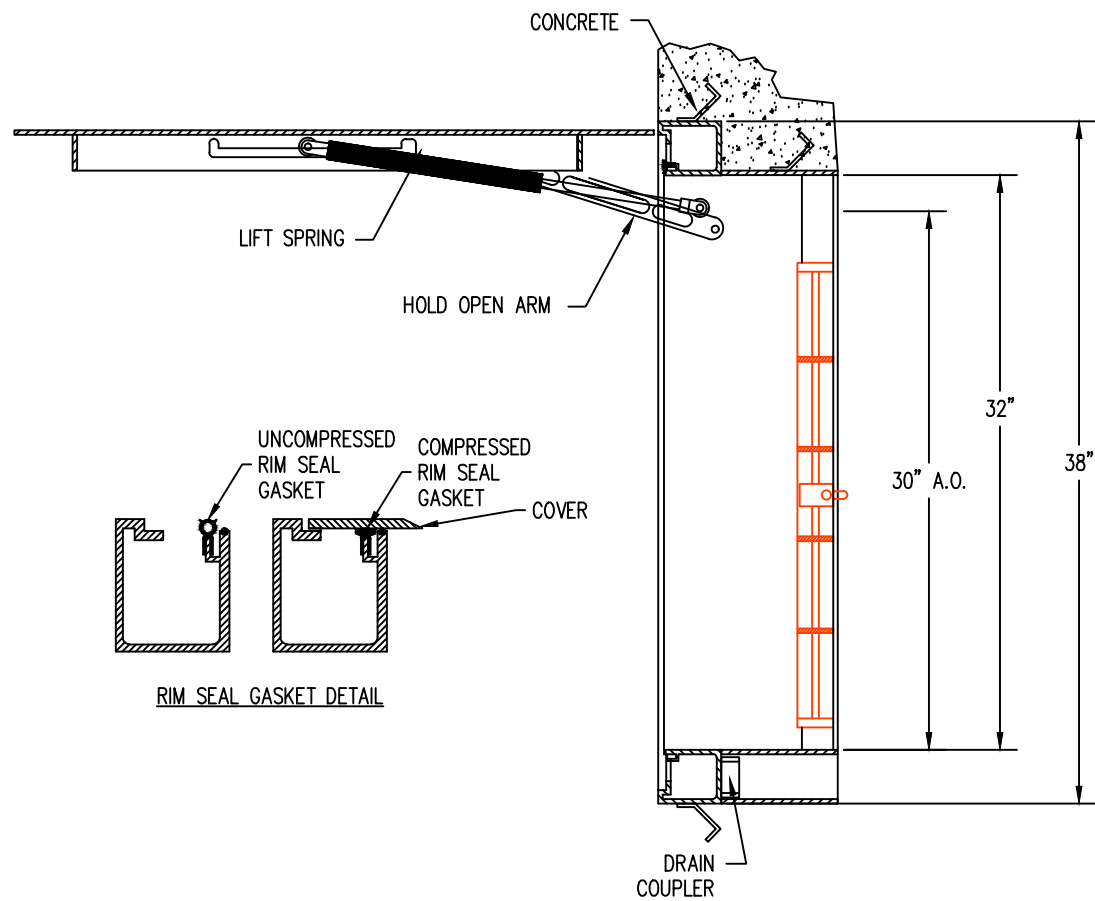
EACH HATCH SHALL BE SUPPLIED WITH A GRADE 316 STAINLESS STEEL SLAM LOCK, WITH KEY WAY PROJECTED BY A THREADED PLUG. PLUG SHALL BE FLUSH WITH THE TOP OF THE 1/4" DIAMOND PLATE. SLAM LOCK SHALL BE FASTENED WITH FOUR GRADE 316 STAINLESS STEEL BOLTS AND WASHERS.

EACH HATCH SHALL BE EQUIPPED WITH AN ALUMINUM LIFT HANDLE. THE LIFT HANDLE SHALL BE FLUSH WITH THE TOP OF THE 1/4" DIAMOND PLATE.

UNITS SHALL BE SUPPLIED WITH HINGED SAFETY GRATES TO PROVIDE PROTECTION AGAINST FALL THROUGH AND TO CONTROL ACCESS TO THE CONFINED SPACE.

EACH UNIT SHALL BE SUPPLIED WITH RIMSEAL GASKET.

EACH HATCH SHALL BE SUPPLIED WITH A RECESSED PADLOCK CLIP (PADLOCK SUPPLIED BY OTHERS).



STYLE "CLS2" ACCESS HATCH, AS MANUFACTURED BY E.J.

MATERIAL SHALL BE 6061-T6 ALUMINUM FOR BARS, ANGLES, AND EXTRUSIONS. 1/4" DIAMOND PLATE SHALL BE 5086 ALUMINUM.

UNIT DESIGNED PEDESTRIAN RATED, FOR A MINIMUM LIVE LOAD OF 300 LBS./SQ. FT.

EACH DOOR SHALL BE SUPPLIED WITH A HEAVY DUTY STAINLESS STEEL PNEUMATIC LIFT SPRING, FORESE OF OPERATING WHEN OPENING COVER. COVER SHALL BE COUNTERBALANCED, SO ONE PERSON CAN EASILY OPEN THE HATCH DOOR. SPRING DESIGN SHALL ACCOMMODATE EASE OF MAINTENANCE.

HINGES SHALL BE OF HEAVY DUTY DESIGN. MATERIAL SHALL BE GRADE 316 STAINLESS STEEL. EACH HINGE SHALL HAVE A GRADE 316 STAINLESS STEEL, 3/8" DIAMETER PIN. HINGES SHALL BE FASTENED TO THE CHANNEL FRAME AND DIAMOND PLATE USING GRADE 316 STAINLESS STEEL BOLTS AND NY-LOCK NUTS.

EACH DOOR SHALL BE EQUIPPED WITH A STAINLESS STEEL HOLD OPEN ARM. DOOR SHALL LOCK OPEN IN THE 90 DEGREE POSITION. HOLD OPEN ARM SHALL BE FASTENED TO THE FRAME WITH A 1/2" GRADE 316 STAINLESS STEEL BOLT.

CHANNEL FRAME SHALL BE OF EXTRUDED ALUMINUM. FRAME SHALL HAVE A DOVE TAIL GROOVE TO ACCEPT A 1/8" SILICONE CUSHION GASKET. CHANNEL FRAME SHALL BE A MINIMUM OF 1/4" THICK, WITH A MINIMUM CROSS SECTION OF 7.5".

EXTERIOR OF FRAME WHICH COMES IN CONTACT WITH THE CONCRETE SHALL BE COATED WITH ONE COAT OF BLACK PRIMER.

HATCH COVER SHALL BE SUPPLIED WITH STAINLESS STEEL LIFT SPRING.

EACH "CLM2" STYLE HATCH IS SUPPLIED WITH A 1-1/2" THREADED DRAIN COUPLER ON UNDERSIDE OF CHANNEL FRAME FOR PIPE CONNECTION.

ALL HARDWARE SHALL BE STAINLESS STEEL.

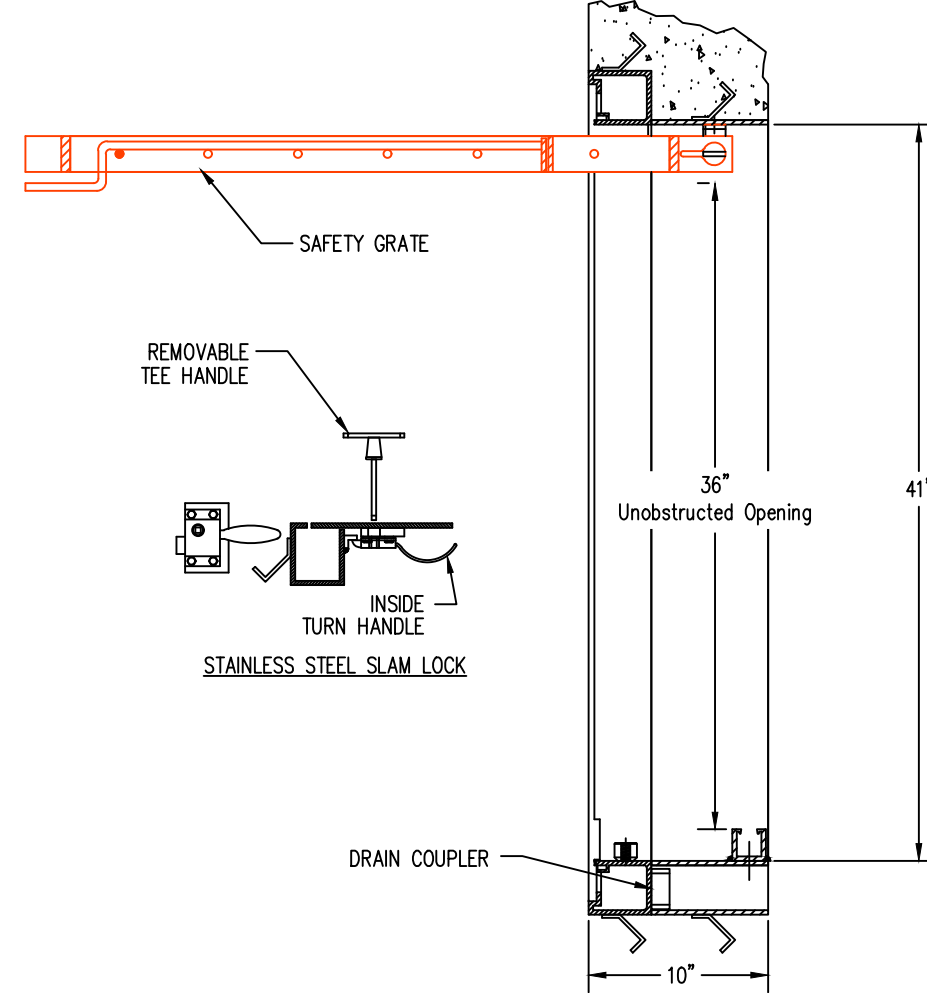
EACH HATCH SHALL BE SUPPLIED WITH A GRADE 316 STAINLESS STEEL SLAM LOCK, WITH KEY WAY PROJECTED BY A THREADED PLUG. PLUG SHALL BE FLUSH WITH THE TOP OF THE 1/4" DIAMOND PLATE. SLAM LOCK SHALL BE FASTENED WITH FOUR GRADE 316 STAINLESS STEEL BOLTS AND WASHERS.

EACH HATCH SHALL BE EQUIPPED WITH AN ALUMINUM LIFT HANDLE. THE LIFT HANDLE SHALL BE FLUSH WITH THE TOP OF THE 1/4" DIAMOND PLATE.

UNITS SHALL BE SUPPLIED WITH HINGED SAFETY GRATES TO PROVIDE PROTECTION AGAINST FALL THROUGH AND TO CONTROL ACCESS TO THE CONFINED SPACE.

EACH UNIT SHALL BE SUPPLIED WITH RIMSEAL GASKET.

EACH HATCH SHALL BE SUPPLIED WITH A RECESSED PADLOCK CLIP (PADLOCK SUPPLIED BY OTHERS).



PEDESTRIAN RATED ALUMINUM SAFE HATCH®

NO SCALE

EAST JORDAN PRODUCT NUMBER H303014911

PEDESTRIAN RATED ALUMINUM SAFE HATCH®

NO SCALE

EAST JORDAN PRODUCT NUMBER H36601596

DISCLAIMER

HSE'S LIFT STATION PLAN, LIFT STATION AND FORCE MAIN DETAILS AND LIFT STATION AND FORCE MAIN SPECIFICATIONS ARE COMPLEMENTARY IN NATURE AND SHOULD NOT BE INTERPRETED INDIVIDUALLY WITHOUT REFERENCE TO THE OTHER SHEETS.

THESE DRAWINGS AND THE IDEAS, DESIGNS AND CONCEPTS CONTAINED HEREIN ARE THE EXCLUSIVE INTELLECTUAL PROPERTY OF SANITARY MANAGEMENT & ENGINEERING COMPANY, INC. AND ARE NOT TO BE USED OR REPRODUCED IN WHOLE OR IN PART, WITHOUT THE WRITTEN CONSENT OF SANITARY MANAGEMENT & ENGINEERING COMPANY, INC. ©2018 BY SANITARY MANAGEMENT & ENGINEERING COMPANY, INC.

REVISIONS

BY	DATE	CHECK NO.	BY	DATE	CHECK
1	12/20/2017	1	WFE	12/20/2017	1K

DRAWN

1	12/20/2017	1	WFE	12/20/2017	1K
---	------------	---	-----	------------	----

CERTIFIED

SAMCO
Sanitary Management & Engineering Company, Inc.
FISHERS, INDIANA 46038
317-577-1150 Fax 317-577-3642

JOB NO.

1

PROJECT

1

PREPARED FOR

Hamilton

TITLE

TYPICAL LIFT STATION AND FORCE MAIN DETAILS

SCALE:

N/A

SHEET

3 of 3